



# FALL SCHEDULE

# 2024

**TRINIDAD STATE COLLEGE**

Updated 3/12/24 @ 4:54pm

Associate of General Studies  
 Associate of Science Associate of General Studies  
 Agriculture Business Administration  
 Art History and Studio Art  
 Basic Law Enforcement Training Academy (LETA)  
 Business Construction Technology  
 Computer Networking Computer Science  
 Early Childhood Education Economics  
 Elementary Teacher Education  
 Fire Education  
 Animal Science  
 Automotive Service Technology  
 Criminal Justice  
 Cybersecurity  
 Dental Assistant  
 Emergency Medical Technician  
 Information Technology  
 Nursing Biology  
 Bachelor of Science in Nursing (RN-BSN)  
 Computer Information Systems  
 Dental Assistant  
 Emergency Medical Technician



# STUDENT ADMISSIONS CHECKLIST

**Apply for Admissions and Scholarships**

Apply for scholarships at the same time you apply for admission.

Application: [trinidadstate.edu/apply](http://trinidadstate.edu/apply)

Scholarships: [trinidadstate.edu/scholarships](http://trinidadstate.edu/scholarships)

**Apply for Financial Aid**

File a Free Application for Federal Student Aid: [www.fafsa.ed.gov](http://www.fafsa.ed.gov)

TSC Code: 001368 – you will need previous income tax records

FSA ID: \_\_\_\_\_

Password: \_\_\_\_\_

For support, contact the Financial Aid staff at 719-846-5017

or the Educational Opportunity Center at 719-846-5689.

**High School Transcripts**

Submit proof of graduation or high school transcripts to the Admissions Office.

Have your high school send an official copy of your high school transcript at the time of application.

*Send High School transcripts and documents to:*

Admissions

Trinidad State College

600 Prospect Street

Trinidad, CO 81082

**College Transcripts**

Send college transcripts to Trinidad State. If you have enrolled in any college courses while attending high school, have each college send an official transcript to the Office of the Registrar prior to enrollment.

*Send High School transcripts and documents to:*

Registrar

Trinidad State College

600 Prospect Street

Trinidad, CO 81082

**Immunization**

Have your doctor send a copy of your immunization record to Trinidad State College.

Your record may be on your high school transcript.



**STUDENT'S  
FIRST**  
TRINIDAD STATE

# TABLE OF CONTENTS

- How to read the Schedule, How do you go to Class?, and Academic Pathways ..... 04
- Trinidad Campus Fall 2024 Class List ..... 05
- Trinidad Campus Building Codes ..... 10
- Valley Campus (Alamosa) Fall 2024 Class List ..... 11
- CCCOnline Fall 2024 Class List ..... 19
- Statewide Guaranteed Transfer..... 23
- General Information..... 25
- Phone Numbers..... 29
- Course Specific Fees ..... 30
- Scholarship Opportunities..... 35



## IMPORTANT DATES FOR FALL 2024

March 11, 2024.....	Fall Registration / Advising / Placement Testing Begins
August 19, 2024 .....	Session 1 Classes Begin
September 3, 2024 .....	Session 2 Classes Begin
November 27-29, 2024 .....	Fall Break
November 28, 2024 .....	Thanksgiving Holiday
December 4, 2024 .....	Last Day of Classes
December 5, 6, 9, 2024 .....	Final Examinations
December 10, 2024 .....	Assessment Day

# How to Read the Schedule

Each course is identified in four parts: ,  
CRN#, Subject, Course Number, and Section

Dates of class  
and meeting times

Building and room class meets in. Always  
check your TSCONnect Portal for current class locations

CRN# SUB Course Sect Course Title

Hrs. Start End Start End Bldg. Room Days Instructor Campus



Days of the week the class is held:  
M = Monday, T = Tuesday, W = Wednesday,  
R = Thursday, F = Friday, S = Saturday, U = Sunday  
Example: TR means the class meets Tuesdays & Thursdays.

## How do you go to class?



	In-Person, On-Campus	Hybrid On/Off Campus	Colorado Online
<b>Description:</b>	These classes require physical presence at set days, times, and location and are in-person, on-campus.	These classes require attendance at set days and times either in-person or virtual presence via WebEx/Zoom.	These classes are completely online (anytime).
<b>Where do I go?</b>	Classroom location noted on schedule.	Classroom location noted on schedule or virtual attendance.	100% Online (anytime).

# ACADEMIC PATHWAYS

## AGRICULTURE, NATURAL RESOURCES & ENERGY

Agriculture Business  
Agriculture Education  
Animal Science  
Soil & Crop Sciences  
Line Technician



... and so much more ...

## BUSINESS & PUBLIC ADMINISTRATION

Accounting Clerk  
Business  
Computer (CIS/CNG/CS)  
Criminal Justice  
Law Enforcement



... and so much more ...

## HEALTH SCIENCES

Nursing (ADN, BSN)  
Dental Assistant  
Medical Assistant  
Emergency Medical  
Paramedic  
Nurse Aid



... and so much more ...

## EDUCATION

Teacher Preparation  
Elementary Education  
Special Education  
Early Childhood  
Supervisor (Infant/Toddler)



... and so much more ...

## SKILLED TRADES

Welding Technology  
Automotive Service  
Construction Technology  
Trail Construction  
Gunsmithing  
Cosmetology / Barbering



... and so much more ...

## STEM & LIBERAL ARTS

Biology  
Mathematics  
Pre-Engineering  
Psychology  
History / English  
Art / Theatre



... and so much more ...

# TRINIDAD CAMPUS FALL 2024 CLASS LIST

IN-PERSON, ON CAMPUS			COMBINATION ON/OFF CAMPUS			ONLINE									
CRN	SUB	Course	Section	Title	Hrs	Start	End	Start	End	Bld	Room	Days	Instructor	Campus	
<b>ACCOUNTING</b>															
22536	ACC	1001	H00	Fundamentals of Accounting	3	3-Sep-24	9-Dec-24	0630PM	0730PM	TOFCMP	D2L	M	Rigdon	TSC Virtual	
22344	ACC	1021	H00	Accounting Principles I	4	19-Aug-24	9-Dec-24	0200PM	0315PM	TOFCMP	D2L	TR	Rigdon	TSC Virtual	
<b>AGRICULTURE</b>															
22274	AGE	1102	H00	Agriculture Economics: GT-SS1	3	19-Aug-24	9-Dec-24	D2L	D2L	TOFCMP	D2L	D2L	Wiley	TSC Virtual	
22275	AGE	2105	H00	Farm and Ranch Management	3	19-Aug-24	9-Dec-24	D2L	D2L	TOFCMP	D2L	D2L	Wiley	TSC Virtual	
22413	AGE	2108	H00	Agricultural Finance	3	19-Aug-24	9-Dec-24	D2L	D2L	TOFCMP	D2L	D2L	Wiley	TSC Virtual	
22291	AGY	1100	H00	General Crop Production	4	19-Aug-24	9-Dec-24	D2L	D2L	TOFCMP	D2L	D2L	Stillings	TSC Virtual	
22272	ASC	1100	H00	Animal Sciences	3	19-Aug-24	9-Dec-24	D2L	D2L	TOFCMP	D2L	D2L	Stillings	TSC Virtual	
22382	RAM	2005	H00	Range Management	3	19-Aug-24	9-Dec-24	D2L	D2L	TOFCMP	D2L	D2L	Stillings	TSC Virtual	
<b>ART</b>															
22714	ART	1002	100	Visual Concepts 2-D Design	3	19-Aug-24	9-Dec-24	0100PM	0330PM	TBERG	301	TR	Reiling	TSC Trinidad	
22438	ART	1110	PH7	Art Appreciation: AH1	3	19-Aug-24	9-Dec-24	0800AM	0915AM	TBERG	301	R	Reiling	TSC Trinidad	
22280	ART	1111	PH7	Art Hist Ancient/ Mediev: AH1	3	19-Aug-24	9-Dec-24	0800AM	0915AM	TBERG	301	T	Reiling	TSC Trinidad	
22565	ART	1201	100	Drawing I	3	19-Aug-24	9-Dec-24	0100PM	0330PM	TBERG	301	MW	Reiling	TSC Trinidad	
22849	ART	1301	100	Painting I	3	19-Aug-24	9-Dec-24	1230PM	0300PM	TBERG	301	MW	Reiling	TSC Trinidad	
22513	ART	1110	H00	Art Appreciation: AH1	3	3-Sep-24	9-Dec-24	D2L	D2L	TOFCMP	D2L	F	Reiling	TSC Virtual	
<b>AUTOMOTIVE</b>															
22253	ASE	1002	100	Intro to the Automotive Shop	2	3-Sep-24	9-Dec-24	0800AM	1200PM	TBV	101	MTWRF	Brunelli	TSC Trinidad	
22008	ASE	1020	100	Basic Auto Electricity	2	3-Sep-24	9-Dec-24	1230PM	0430PM	TBV	101	MTWRF	Brunelli	TSC Trinidad	
22741	ASE	1022	100	Auto Elec Safety Systems	1	3-Sep-24	9-Dec-24	0800AM	0845AM	TBV	101	WR	Brunelli	TSC Trinidad	
22739	ASE	1023	100	Starting & Charging Systems	2	3-Sep-24	9-Dec-24	0100PM	0230PM	TBV	101	WR	Brunelli	TSC Trinidad	
22740	ASE	1050	100	Man Drive Train & Axle Maint.	2	3-Sep-24	9-Dec-24	0830AM	1000AM	TBV	101	MT	Brunelli	TSC Trinidad	
22742	ASE	1051	100	Man Trans/Transaxles/Clutch I	2	3-Sep-24	9-Dec-24	1015AM	1145AM	TBV	101	MT	Brunelli	TSC Trinidad	
22743	ASE	1052	100	Man Trans/Transax/Clutch II	2	3-Sep-24	9-Dec-24	0100PM	0230PM	TBV	101	MT	Brunelli	TSC Trinidad	
22738	ASE	2021	100	Auto/Diesel Body Electrical	4	3-Sep-24	9-Dec-24	0900AM	1200PM	TBV	101	WR	Brunelli	TSC Trinidad	
<b>ASTRONOMY</b>															
22378	AST	1110	100	Planetary Astronomy w/Lab: SC1	4	19-Aug-24	9-Dec-24	0300PM	0350PM	TDAVIS	234	MTWR	Wiening	TSC Trinidad	
<b>BIOLOGY</b>															
22598	BIO	1052	100	Wildlife Biology	3	19-Aug-24	9-Dec-24	0930AM	1030AM	TDAVIS	228	MTW	Wiening	TSC Trinidad	
22286	BIO	1111	100	Gen College Biology I/Lab: SC1	5	19-Aug-24	9-Dec-24	0800AM	0915AM	TDAVIS	228	MWR	Wiening	TSC Trinidad	
22286	BIO	1111	100	Gen College Biology I/Lab: SC1	5	19-Aug-24	9-Dec-24	0800AM	0915AM	TDAVIS	228	T	Wiening	TSC Trinidad	
22011	BIO	1111	102	Gen College Biology I/Lab: SC1	5	19-Aug-24	9-Dec-24	0100PM	0215PM	TDAVIS	228	MTW	Wiening	TSC Trinidad	
22011	BIO	1111	102	Gen College Biology I/Lab: SC1	5	19-Aug-24	9-Dec-24	0100PM	0215PM	TDAVIS	228	R	Wiening	TSC Trinidad	
22461	BIO	2101	100	Human Anatomy&Phys I w/Lab:SC1	4	19-Aug-24	9-Dec-24	1100AM	1230PM	TDAVIS	222	TR	Walker	TSC Trinidad	
22461	BIO	2101	100	Human Anatomy&Phys I w/Lab:SC1	4	19-Aug-24	9-Dec-24	0200PM	0500PM	TDAVIS	222	T	Walker	TSC Trinidad	
22462	BIO	2101	102	Human Anatomy&Phys I w/Lab:SC1	4	19-Aug-24	9-Dec-24	1100AM	1215PM	TDAVIS	222	TR	Walker	TSC Trinidad	
22462	BIO	2101	102	Human Anatomy&Phys I w/Lab:SC1	4	19-Aug-24	9-Dec-24	0200PM	0500PM	TDAVIS	222	R	Walker	TSC Trinidad	
22582	BIO	2102	100	Human Anatomy&Phys IIw/Lab:SC1	4	19-Aug-24	9-Dec-24	1100AM	1230PM	TDAVIS	222	MW	Walker	TSC Trinidad	
22582	BIO	2102	100	Human Anatomy&Phys IIw/Lab:SC1	4	19-Aug-24	9-Dec-24	0200PM	0500PM	TDAVIS	222	W	Walker	TSC Trinidad	
22681	BIO	1111	H00	Gen College Biology I/Lab: SC1	5	19-Aug-24	9-Dec-24	D2L	D2L	TOFCMP	D2L	D2L	Cahoone	TSC Virtual	
22781	BIO	2102	H00	Human Anatomy&Phys IIw/Lab:SC1	4	3-Sep-24	9-Dec-24	D2L	D2L	TOFCMP	D2L	D2L	Walker	TSC Virtual	
22773	BIO	2116	H00	Pathophysiology	4	3-Sep-24	9-Dec-24	0600PM	0750PM	TOFCMP	D2L	M	Moniot	TSC Virtual	
<b>BUSINESS</b>															
22969	BUS	2016	H00	Legal Environment of Business	3	19-Aug-24	9-Dec-24	0200PM	0320PM	TOFCMP	D2L	MW	Hammer	TSC Virtual	
22534	BUS	1015	H00	Introduction to Business	3	3-Sep-24	9-Dec-24	1200PM	1250PM	TDAVIS	215	F	Velasquez	TSC Trinidad	
22665	BUS	1021	P70	Basic Workplace Skills	1	3-Sep-24	22-Oct-24	0745AM	0945AM	TBOYD	TCRM	F	Maxwell	TSC Trinidad	
22599	BUS	2017	H10	Business Communications	3	19-Aug-24	9-Dec-24	0800AM	0850AM	TDAVIS	215	MWF	Velasquez	TSC Trinidad	
22970	BUS	2026	H00	Business Statistics	3	3-Sep-24	9-Dec-24	0930AM	1045AM	TOFCMP	D2L	TR	Zverev	TSC Trinidad	
22591	BUS	1002	H10	Entrepreneurial Operations	3	3-Sep-24	9-Dec-24	0600PM	0830PM	TDAVIS	215	W	Velasquez	TSC Trinidad	



# TRINIDAD CAMPUS FALL 2024 CLASS LIST (continued)

IN-PERSON, ON CAMPUS			COMBINATION ON/OFF CAMPUS			ONLINE									
CRN	SUB	Course	Section	Title	Hrs	Start	End	Start	End	Bld	Room	Days	Instructor	Campus	
<b>COMPUTER INFORMATION SYSTEMS</b>															
22576	CIS	1018	H00	Intro PC Applications	3	19-Aug-24	9-Dec-24	D2L	D2L	TOFCMP	D2L	D2L	Rasmussen	TSC Virtual	
<b>COMPUTER &amp; NETWORKING TECHNOLOGY</b>															
22804	CNG	1031	H00	Prin of Information Assurance	3	19-Aug-24	9-Dec-24	0900AM	0950AM	TOFCMP	D2L	W	Velasquez	TSC Trinidad	
<b>COMMUNICATION</b>															
22287	COM	1150	100	Public Speaking	3	19-Aug-24	9-Dec-24	1230PM	0145PM	TBERG	105	TR	Nordgren	TSC Trinidad	
22013	COM	1150	101	Public Speaking	3	19-Aug-24	9-Dec-24	0900AM	0950AM	TBERG	105	MWF	Nordgren	TSC Trinidad	
22616	COM	1250	100	Interpersonal Comm: SS3	3	19-Aug-24	9-Dec-24	1100AM	1215PM	TBERG	105	TR	Nordgren	TSC Trinidad	
22787	COM	1250	101	Interpersonal Comm: SS3	3	19-Aug-24	9-Dec-24	1100AM	1215PM	TBERG	105	MW	Nordgren	TSC Trinidad	
22956	COM	1250	H00	Interpersonal Comm: SS3	3	3-Sep-24	9-Dec-24	D2L	D2L	TOFCMP	D2L	D2L	Hamilton	TSC Virtual	
22009	COM	1150	H00	Public Speaking	3	3-Sep-24	9-Dec-24	D2L	D2L	TOFCMP	D2L	D2L	Hamilton	TSC Virtual	
<b>CONSTRUCTION</b>															
22558	CON	1057	100	NCCER Core	5	21-Aug-24	18-Sep-24	0800AM	1200PM	TBV	307	MTWRF	Begley	TSC Trinidad	
22559	CAR	1070	100	Clinical:Construction Lab I	3	21-Aug-24	18-Sep-24	0100PM	0500PM	TOFCMP	TBA	MTWRF	Begley	TSC Misc.	
22567	CON	1057	101	NCCER Core	5	25-Sep-24	20-Oct-24	0800AM	1200PM	TBV	307	MTWRF	Begley	TSC Trinidad	
22568	CAR	1070	100	Clinical:Construction Lab I	3	25-Sep-24	20-Oct-24	0100PM	0500PM	TOFCMP	TBA	MTWRF	Begley	TSC Misc.	
<b>COSMETOLOGY</b>															
22288	COS	1003	100	Intro Hair and Scalp	1	19-Aug-24	9-Dec-24	1235PM	0125PM	TMULL	301	MT	Samora	TSC Trinidad	
22014	COS	1010	100	Intro Color	2	19-Aug-24	9-Dec-24	0130PM	0425PM	TMULL	301	M	Samora	TSC Trinidad	
22439	COS	1011	100	Inter I Color	2	19-Aug-24	9-Dec-24	0130PM	0425PM	TMULL	301	R	Samora	TSC Trinidad	
22015	COS	1020	100	Intro Cutting	2	19-Aug-24	9-Dec-24	0130PM	0425PM	TMULL	301	T	Samora	TSC Trinidad	
22016	COS	1030	100	Intro Styling	2	19-Aug-24	9-Dec-24	0130PM	0425PM	TMULL	301	W	Samora	TSC Trinidad	
22017	COS	1040	100	Intro to Chemical Texture	1	19-Aug-24	9-Dec-24	1235PM	0125PM	TMULL	301	WR	Samora	TSC Trinidad	
22289	COS	1050	100	Laws, Rules, and Regulations	1	19-Aug-24	9-Dec-24	0800AM	0855AM	TMULL	301	W	Samora	TSC Trinidad	
22580	COS	2050	100	Bus Mgmt/Per Skills/Ethics	1	19-Aug-24	9-Dec-24	0335PM	0445PM	TMULL	301	F	Samora	TSC Trinidad	
22548	COS	2062	100	Adv II Disinfect/Sanit/Safety	3	19-Aug-24	9-Dec-24	0800AM	1145AM	TMULL	301	T	Samora	TSC Trinidad	
<b>CRIMINAL JUSTICE</b>															
22254	CRJ	1010	H10	Intro to Criminal Justice: SS3	3	3-Sep-24	9-Dec-24	0100PM	0215PM	TSSC	CONF	M	Sloane	TSC Trinidad	
22850	CRJ	1025	H10	Policing Systems	3	19-Aug-24	9-Dec-24	1200PM	1250PM	TSSC	CONF	W	Mochel	TSC Trinidad	
22608	CRJ	2030	H10	Criminology	3	3-Sep-24	9-Dec-24	0100PM	0215PM	TSSC	CONF	W	Sloane	TSC Trinidad	
<b>EARLY CHILDHOOD</b>															
22252	ECE	1011	H00	Intro to Early Childhood Educ	3	19-Aug-24	9-Dec-24	0600PM	0730PM	TDAVIS	203A	W	Plane	TSC Trinidad	
22610	ECE	1045	H00	Intro to ECE Techniques	3	19-Aug-24	9-Dec-24	0600PM	0630PM	TDAVIS	203A	M	Plane	TSC Trinidad	
22593	ECE	1111	H00	Infant/Toddler Theory/Practice	3	19-Aug-24	9-Dec-24	0445PM	0555PM	TDAVIS	215	W	Briones	TSC Trinidad	
22727	ECE	1125	H00	Infant/Toddler Lab Tech	3	19-Aug-24	9-Dec-24	0430PM	0555PM	TDAVIS	203A	M	Briones	TSC Trinidad	
22449	ECE	2401	H00	Admin of ECE Programs	3	19-Aug-24	9-Dec-24	0600PM	0730PM	TDAVIS	215	T	Briones	TSC Trinidad	
<b>ECONOMICS</b>															
22572	ECO	2001	P70	Prin of Macroeconomics: SS1	3	3-Sep-24	9-Dec-24	0735AM	0845AM	TDAVIS	215	TR	Velasquez	TSC Trinidad	
<b>EDUCATION</b>															
22020	EDU	1088	100	Practicum I	1	19-Aug-24	9-Dec-24	TBA	TBA	TBA	TBA	TBA	Trujillo	TSC Trinidad	
22494	EDU	2611	P70	Teaching, Learning & Technology	3	19-Aug-24	9-Dec-24	0530PM	0800PM	TDAVIS	215	R	Boone	TSC Trinidad	
<b>EMERGENCY MEDICAL</b>															
22524	EMS	1021	100	EMT Fundamentals	3	19-Aug-24	17-Sep-24	0800AM	0500PM	TDAVIS	123	S	Bacharach	TSC Trinidad	
22524	EMS	1021	100	EMT Fundamentals	3	19-Aug-24	17-Sep-24	0600PM	1000PM	TDAVIS	123	MR	Bacharach	TSC Trinidad	
22525	EMS	1022	100	EMT Medical Emergencies	4	18-Sep-24	29-Oct-24	0600PM	1000PM	TDAVIS	123	MR	Bacharach	TSC Trinidad	
22525	EMS	1022	100	EMT Medical Emergencies	4	18-Sep-24	29-Oct-24	0800AM	0500PM	TDAVIS	123	S	Bacharach	TSC Trinidad	
22526	EMS	1023	100	EMT Trauma Emergencies	2	30-Oct-24	14-Nov-24	0600PM	1000PM	TDAVIS	123	MR	Bacharach	TSC Trinidad	
22526	EMS	1023	100	EMT Trauma Emergencies	2	30-Oct-24	14-Nov-24	0800AM	0500PM	TDAVIS	123	S	Bacharach	TSC Trinidad	
22527	EMS	1024	100	EMT Special Considerations	2	14-Nov-24	9-Dec-24	0800AM	0500PM	TDAVIS	123	S	Bacharach	TSC Trinidad	
22527	EMS	1024	100	EMT Special Considerations	2	14-Nov-24	9-Dec-24	0600PM	1000PM	TDAVIS	123	MR	Bacharach	TSC Trinidad	
22796	EMS	1026	100	EMT Basic Refresher	2	19-Aug-24	9-Dec-24	0500PM	1000PM	TDAVIS	145	MTWRF	Bacharach	TSC Trinidad	
22528	EMS	1070	100	EMT Clinical	1	18-Sep-24	9-Dec-24	0600PM	1000PM	TBA	TBA	TBA	Bacharach	TSC Trinidad	
22640	EMS	1125	100	AEMT Fundamentals	2			0500PM	0900PM	TDAVIS	105	TRS	Velasquez	TSC Trinidad	
22641	EMS	1129	100	AEMT Pharmacology	1			0500PM	0900PM	TDAVIS	105	TRS	Velasquez	TSC Trinidad	

# TRINIDAD CAMPUS FALL 2024 CLASS LIST (continued)

IN-PERSON, ON CAMPUS			COMBINATION ON/OFF CAMPUS		ONLINE										
CRN	SUB	Course	Section	Title	Hrs	Start	End	Start	End	Bld	Room	Days	Instructor	Campus	
<b>ENGLISH</b>															
22271	ENG	1021	100	English Composition I:CO1	3	19-Aug-24	9-Dec-24	1100AM	1215PM	TBERG	310	TR	Hyman	TSC Trinidad	
22433	ENG	1021	102	English Composition I:CO1	3	3-Sep-24	9-Dec-24	0930AM	1055AM	TBERG	105	TR	Nordgren	TSC Trinidad	
22331	ENG	1022	100	English Composition II:CO2	3	19-Aug-24	9-Dec-24	1230PM	0145PM	TBERG	310	TR	Hyman	TSC Trinidad	
22836	ENG	2021	100	Creative Writing	3	19-Aug-24	9-Dec-24	0100PM	0215PM	TBERG	310	MW	Hyman	TSC Trinidad	
22428	ENG	1021	H00	English Composition I:CO1	3	19-Aug-24	9-Dec-24	1230PM	0145PM	TVC	103	TR	Geraci	TSC Virtual	
22487	ENG	1022	H10	English Composition II:CO2	3	19-Aug-24	9-Dec-24	1100AM	1150AM	TBERG	310	MWF	Hyman	TSC Trinidad	
22566	ENG	1021	H12	English Composition I:CO1	3	3-Sep-24	9-Dec-24	1100AM	1215PM	TBERG		TR	Wilson	TSC Trinidad	
22021	ENG	1021	H10	English Composition I:CO1	3	19-Aug-24	9-Dec-24	1000AM	1050AM	TBERG	310	MWF	Hyman	TSC Trinidad	
<b>ENVIRONMENTAL SCIENCE</b>															
22575	ENV	1010	H00	Natural Disasters: SC2	3	3-Sep-24	9-Dec-24	D2L	D2L	TOFCMP	D2L	D2L	Cahoone	TSC Virtual	
22574	ENV	1111	H00	Environmental Sci w/Lab: SC1	4	3-Sep-24	9-Dec-24	D2L	D2L	TOFCMP	D2L	D2L	Cahoone	TSC Virtual	
<b>ESTHETICIAN</b>															
22440	EST	1010	100	Intro Skin Care	3	19-Aug-24	9-Dec-24	0800AM	1145AM	TMULL	301	M	Samora	TSC Trinidad	
<b>Gunsmithing - NRA Certified Training Center: To register, please call Dan Wilson at 719-846-5567</b>															
22701	GUR	1001	100	NRA Home Firearm Safety Course	0.5	TBA	TBA	0800AM	0500PM	TMULL	306	F	Newport	TSC Trinidad	
22706	GUR	1020	100	NRA Range Safety Officer	0.5	TBA	TBA	0600PM	0800PM	TMULL	412	F	Newport	TSC Trinidad	
22705	GUR	2000	100	NRA Basic Instruction Training	0.5	TBA	TBA	0600PM	0800PM	TMULL	412	F	Newport	TSC Trinidad	
22708	GUR	2001	100	Firearm Safety Instructor	0.5	TBA	TBA	0600PM	0800PM	TMULL	412	F	Newport	TSC Trinidad	
<b>GUNSMITHING</b>															
To register, please call Dan Wilson at 719-846-5567															
22245	GUS	1000	100	Orientation & Firearms Safety	0.5	16-Aug-24	16-Aug-24	0800AM	0500PM	TMULL	306	F	Newport	TSC Trinidad	
22652	GUS	1001	107	Introduction to Small Arms	4	TBA	TBA	0800AM	0500PM	TMULL	206	MTWRF	Massingill	TSC Trinidad	
22029	GUS	1002	100	Introduction to Firearms	2	19-Aug-24	9-Dec-24	0105PM	0210PM	TMULL	213	MW	Schmit	TSC Trinidad	
22255	GUS	1010	100	Firearms Bench Metal	5	19-Aug-24	9-Dec-24	0130PM	0430PM	TMULL	106	TR	Newport	TSC Trinidad	
22451	GUS	1012	100	Firearms Machine Shop I	5	19-Aug-24	9-Dec-24	0830AM	1155AM	TMULL	211	TR	Schmit	TSC Trinidad	
22452	GUS	1019	100	Stockmaking I	5	19-Aug-24	9-Dec-24	0830AM	1145AM	TMULL	101	MWF	Campbell	TSC Trinidad	
22453	GUS	1027	100	Firearms Machine Shop II	4	19-Aug-24	9-Dec-24	0830AM	1120AM	TMULL	211	MW	Schmit	TSC Trinidad	
22030	GUS	1035	100	Firearms Conversions	5	19-Aug-24	9-Dec-24	0100PM	0315PM	TMULL	101	TRF	Campbell	TSC Trinidad	
22346	GUS	1036	100	Firearms Metal Finishing	2	19-Aug-24	9-Dec-24	0130PM	0430PM	TMULL	106	W	Campbell	TSC Trinidad	
22332	GUS	1039	100	Stock Duplication	2	19-Aug-24	9-Dec-24	0100PM	0430PM	TMULL	101	M	Campbell	TSC Trinidad	
22031	GUS	1047	100	Firearms Repair I	5	19-Aug-24	9-Dec-24	0830AM	1145AM	TMULL	306	TR	Newport	TSC Trinidad	
22754	GUS	2002	100	CNC I	2	19-Aug-24	9-Dec-24	0220PM	0500PM	TMULL	213	W	Schmit	TSC Trinidad	
22333	GUS	2005	100	Firearms Machine Shop III	4	19-Aug-24	9-Dec-24	0115PM	0405PM	TMULL	211	TR	Schmit	TSC Trinidad	
22493	GUS	2008	100	Alternative Metal Finishes	2	19-Aug-24	9-Dec-24	0600PM	0830PM	TMULL	106	M	Campbell	TSC Trinidad	
22539	GUS	2040	100	Shotgunsmithing	2	19-Aug-24	9-Dec-24	0100PM	0400PM	TMULL	106	M	Newport	TSC Trinidad	
22244	GUS	2045	100	Stockmaking II	5	19-Aug-24	9-Dec-24	0830AM	1145AM	TMULL	101	TR	Campbell	TSC Trinidad	
22441	GUS	2047	100	Firearms Repair II	7	19-Aug-24	9-Dec-24	0830AM	1140AM	TMULL	306	MWF	Newport	TSC Trinidad	
22256	GUS	2065	100	Comprehensive Skills Evals	0.5	TBA	TBA	0800AM	0500PM	TMULL	306	W	Newport	TSC Trinidad	
22540	GUS	2069	100	Custom Revolversmithing	3	19-Aug-24	9-Dec-24	0100PM	0445PM	TMULL	101	M	Weaver	TSC Trinidad	
22794	GUS	2201	100	Machine Gun Repair	6	TBA	TBA	0800AM	0500PM	TOFCMP	TBA	MTWRF	Massingill	TSC Misc.	
<b>HISTORY</b>															
22602	HIS	1110	P70	The World: Antiquity-1500: HI1	3	19-Aug-24	9-Dec-24	0900AM	0950AM	TBERG	304	MWF	Boone	TSC Trinidad	
22290	HIS	1210	PH7	US History to Reconst: HI1	3	19-Aug-24	9-Dec-24	0800AM	0915AM	TBERG	304	TR	Boone	TSC Trinidad	
22514	HIS	1210	H00	US History to Reconst: HI1	3	19-Aug-24	9-Dec-24	0200PM	0250PM	TOFCMP	D2L	F	Eades	TSC Virtual	
22857	HIS	2105	P70	Women in U.S. History: HI1	3	19-Aug-24	9-Dec-24	930AM	1045AM	TBERG	304	TR	Boone	TSC Trinidad	
22960	HIS	2200	P70	History of Latin America	3	19-Aug-24	9-Dec-24	1100AM	1215PM	TBERG	304	TR	Boone	TSC Trinidad	
<b>HUMAN PERFORMANCE</b>															
22752	HPE	1000	100	Intro to Physical Ed & Sport	2	19-Aug-24	9-Dec-24	1000AM	1050AM	TBOYD	TCRM	MW	Folda	TSC Trinidad	
22442	HPE	2031	H10	Care/Prevent Athletic Injuries	3	19-Aug-24	9-Dec-24	0800AM	0915AM	TSSC	CONF	T	Moreno	TSC Trinidad	
22620	HPE	2000	H00	Perspectives in PE & Sport	3	3-Sep-24	9-Dec-24	0100PM	0150PM	TOFCMP	D2L	F	Sloane	TSC Virtual	

# TRINIDAD CAMPUS FALL 2024 CLASS LIST (continued)

IN-PERSON, ON CAMPUS			COMBINATION ON/OFF CAMPUS		ONLINE											
CRN	SUB	Course	Section	Title	Hrs	Start	End	Start	End	Bld	Room	Days	Instructor	Campus		
<b>HEALTH PROFESSIONAL</b>																
22729	HPR	1039	PH5	Medical Terminology	2	19-Aug-24	9-Dec-24	0300PM	0430PM	TDAVIS	103	R	O'Brien	TSC Trinidad		
22603	HPR	1039	H00	Medical Terminology	2	3-Sep-24	9-Dec-24	1100AM	1155AM	TOFCMP	D2L	TR	Medina	TSC Virtual		
<b>HEALTH &amp; WELLNESS</b>																
22604	HWE	1050	H00	Human Nutrition	3	3-Sep-24	9-Dec-24	0900AM	1025AM	TOFCMP	D2L	TR	Medina	TSC Virtual		
<b>HUMANITIES</b>																
22571	HUM	1015	100	World Mythology: AH2	3	19-Aug-24	9-Dec-24	1000AM	1050AM	TDAVIS	105	MWF	Smith	TSC Trinidad		
22488	HUM	1021	H00	Humanities: Early Civ: AH2	3	3-Sep-24	9-Dec-24	D2L	D2L	TOFCMP	D2L	D2L	Hank	TSC Virtual		
22523	HUM	1023	100	Humanities: Modern Wrid: AH2	3	19-Aug-24	9-Dec-24	0900AM	0950AM	TDAVIS	105	MWF	Smith	TSC Trinidad		
22953	HUM	1015	H00	World Mythology: AH2	3	19-Aug-24	9-Dec-24	D2L	D2L	TOFCMP	D2L	D2L	Smith	TSC Virtual		
22959	HUM	1015	H00	World Mythology: AH2	3	3-Sep-24	9-Dec-24	D2L	D2L	D2L	D2L	D2L	HANK	TSC Virtual		
<b>MANAGEMENT</b>																
22979	MAN	2000	H00	Human Resource Management	3	19-Aug-24	9-Dec-24	0800AM	0920AM	TOFCMP	D2L	MW	Hammer	TSC Virtual		
22981	MAN	1002	H00	Ethics and Values	1	19-Aug-24	9-Dec-24	0930AM	1050AM	TOFCMP	D2L	M	Hammer	TSC Virtual		
22983	MAN	1017	H00	Time Management	1	19-Aug-24	9-Dec-24	0930AM	1050AM	TOFCMP	D2L	W	Hammer	TSC Virtual		
22985	MAN	2026	H00	Principles of Management	3	3-Sep-24	9-Dec-24	D2L	D2L	TOFCMP	D2L	D2L	Hammer	TSC Virtual		
<b>MACHINING</b>																
22347	MAC	1078	151	Machining Workshop	2	19-Aug-24	9-Dec-24	0550PM	0845PM	TMULL	211	T	Schmit	TSC Trinidad		
22348	MAC	2078	151	Machining Workshop	2	19-Aug-24	9-Dec-24	0550PM	0910PM	TMULL	211	R	Schmit	TSC Trinidad		
<b>MARKETING</b>																
22688	MAR	1060	H00	Customer Service	3	3-Sep-24	9-Dec-24	1100AM	1215PM	TOFCMP	D2L	TR	Hammer	TSC Trinidad		
22537	MAR	2016	H00	Principles of Marketing	3	3-Sep-24	9-Dec-24	1230PM	0145PM	TOFCMP	D2L	TR	Hammer	TSC Trinidad		
<b>MATHEMATICS</b>																
22617	MAT	1140	100	Career Math:	3	19-Aug-24	9-Dec-24	0900AM	0950AM	TDAVIS	133	MTW	Watson	TSC Trinidad		
22755	MAT	1240	100	Math for Liberal Arts: MA1	4	19-Aug-24	9-Dec-24	1230PM	0150PM	TDAVIS	234	MTR	Clements	TSC Trinidad		
22025	MAT	1260	100	Intro to Statistics: MA1	3	19-Aug-24	9-Dec-24	0930AM	1050AM	TDAVIS	234	TR	Clements	TSC Trinidad		
22024	MAT	1340	100	College Algebra: MA1	4	19-Aug-24	9-Dec-24	0800AM	0850AM	TDAVIS	133	MTWR	Watson	TSC Trinidad		
22023	MAT	1340	102	College Algebra: MA1	4	19-Aug-24	9-Dec-24	1000AM	1050AM	TDAVIS	133	MTWR	Watson	TSC Trinidad		
22637	MAT	1340	103	College Algebra: MA1	4	19-Aug-24	9-Dec-24	0100PM	0150PM	TDAVIS	133	MTWR	Watson	TSC Trinidad		
22776	MAT	1340	104	College Algebra: MA1	4	3-Sep-24	9-Dec-24	0900AM	0950AM	TDAVIS	203A	MTWR	Slaughter	TSC Trinidad		
22026	MAT	2410	100	Calculus I: MA1	5	19-Aug-24	9-Dec-24	0730AM	0850AM	TDAVIS	234	MTWR	Clements	TSC Trinidad		
22583	MAT	1340	H00	College Algebra: MA1	4	3-Sep-24	9-Dec-24	D2L	D2L	TOFCMP	D2L	D2L	Maclaren	TSC Virtual		
22612	MAT	1260	H00	Intro to Statistics: MA1	3	19-Aug-24	9-Dec-24	D2L	D2L	TOFCMP	D2L	D2L	Emerick	TSC Virtual		
22783	MAT	1340	H01	College Algebra: MA1	4	3-Sep-24	9-Dec-24	D2L	D2L	TOFCMP	D2L	D2L	Slaughter	TSC Virtual		
22975	MAT	1160	H00	Financial Mathematics	3	3-Sep-24	9-Dec-24	1100AM	1220AM	TOFCMP	D2L	TR	Zverev	TSC Virtual		
<b>MEDICAL ASSISTING PROFESSIONAL</b>																
22445	MAP	1010	PH5	Medical Office Administration	4	19-Aug-24	9-Dec-24	0330PM	0730PM	TDAVIS	103	T	O'Brien	TSC Trinidad		
22446	MAP	1020	PH5	Medical Office Financial Mgmt	4	19-Aug-24	9-Dec-24	1255PM	0330PM	TDAVIS	103	W	O'Brien	TSC Trinidad		
22423	MAP	1083	PH5	Medical Assistant Internship	4	19-Aug-24	9-Dec-24	1100AM	1200PM	TDAVIS	103	R	O'Brien	TSC Trinidad		
22483	MAP	2040	PH5	Medical Assist Clinical Skills	4	19-Aug-24	9-Dec-24	0230PM	0630PM	TDAVIS	215	M	O'Brien	TSC Trinidad		
22424	MAP	2069	PH5	Review- Medical Asst Natl Exam	1	19-Aug-24	9-Dec-24	0100PM	0200PM	TDAVIS	103	M	O'Brien	TSC Trinidad		
<b>MUSIC</b>																
22334	MUS	1020	100	Music Appreciation: AH1	3	3-Sep-24	9-Dec-24	0930AM	1045AM	TMC	THEA	TR	Olsen	TSC Trinidad		
<b>NAIL TECHNICIAN</b>																
22473	NAT	1010	100	Intro to Nail Care	3	19-Aug-24	9-Dec-24	0900AM	1145AM	TMULL	301	WR	Samora	TSC Trinidad		
22474	NAT	1011	100	Inter I Nail Care	2	19-Aug-24	9-Dec-24	0845AM	1145AM	TMULL	301	F	Samora	TSC Trinidad		
22475	NAT	2010	100	Advanced Nail Care	2	19-Aug-24	9-Dec-24	1230PM	0330PM	TMULL	301	F	Samora	TSC Trinidad		



# TRINIDAD CAMPUS FALL 2024 CLASS LIST (continued)

IN-PERSON, ON CAMPUS			COMBINATION ON/OFF CAMPUS		ONLINE									
CRN	SUB	Course	Section	Title	Hrs	Start	End	Start	End	Bld	Room	Days	Instructor	Campus
<b>NURSING</b>														
22374	NUR	1001	100	Pharmacology Calculations	1	19-Aug-24	9-Dec-24	1100AM	1200PM	TDAVIS	115	M	DiNero	TSC Trinidad
22426	NUR	1009	100	Fundamentals of Nursing	6	19-Aug-24	9-Dec-24	0900AM	1200PM	TDAVIS	123	T	STAFF	TSC Trinidad
22426	NUR	1009	100	Fundamentals of Nursing	6	19-Aug-24	9-Dec-24						WRF	TSC Trinidad
22278	NUR	1009	150	Fundamentals of Nursing	6	19-Aug-24	9-Dec-24	0400PM	0800PM	TDAVIS	146	M	DiNero	TSC Trinidad
22278	NUR	1009	150	Fundamentals of Nursing	6	19-Aug-24	9-Dec-24					US	DiNero	TSC Trinidad
22243	NUR	1012	100	Basic Concepts of Pharmacology	2	19-Aug-24	9-Dec-24	0100PM	0300PM	TDAVIS	105	T	Vigil	TSC Trinidad
22262	NUR	1012	150	Basic Concepts of Pharmacology	2	19-Aug-24	9-Dec-24	0400PM	0800PM	TDAVIS	146	T	Medina	TSC Trinidad
22241	NUR	2006	100	Adv Concepts of Med/Surg NSG I	6.5	19-Aug-24	9-Dec-24						MRF	TSC Trinidad
22241	NUR	2006	100	Adv Concepts of Med/Surg NSG I	6.5	19-Aug-24	9-Dec-24	1200PM	0300PM	TDAVIS	115	T	Hesslink	TSC Trinidad
22263	NUR	2006	150	Adv Concepts of Med/Surg NSG I	6.5	19-Aug-24	9-Dec-24					US	Hendricks	TSC Trinidad
22263	NUR	2006	150	Adv Concepts of Med/Surg NSG I	6.5	19-Aug-24	9-Dec-24	0400PM	0800PM	TDAVIS	133	R	Hendricks	TSC Trinidad
22242	NUR	2012	100	Pharmacology II	2	19-Aug-24	9-Dec-24	1200PM	0200PM	TDAVIS	115	W	Hesslink	TSC Trinidad
22279	NUR	2012	150	Pharmacology II	2	19-Aug-24	9-Dec-24	0400PM	0800PM	TDAVIS	115	W	Moniot	TSC Trinidad
22522	NUR	3002	H00	Trends in Nursing Practice	3	5-Aug-24	15-Sep-24	D2L	TOFCMP	D2L	D2L	D2L	Cook	TSC Virtual
22767	NUR	3003	H00	Nursing Research/EBP	3	23-Sep-24	3-Nov-24	D2L	TOFCMP	D2L	D2L	D2L	Talbott	TSC Virtual
22538	NUR	3005	H00	Emergency Preparedness	3	4-Nov-24	22-Dec-24	D2L	TOFCMP	D2L	D2L	D2L	Medina	TSC Virtual
22601	NUR	3007	H00	Behavioral Health	3	23-Sep-24	3-Nov-24	D2L	TOFCMP	D2L	D2L	D2L	Hendricks	TSC Virtual
22586	NUR	4011	H00	Senior Seminar	3	4-Nov-24	22-Dec-24	D2L	TOFCMP	D2L	D2L	D2L	Garcia	TSC Virtual
<b>PHYSICAL EDUCATION</b>														
22265	PED	2037	100	VS: Men's Basketball	1	19-Aug-24	9-Dec-24	0215PM	0315PM	TGYM	TGYM	MTWR	Folda	TSC Trinidad
22264	PED	1001	100	Cond. Lab: Men's Basketball	1	19-Aug-24	9-Dec-24	0630PM	0730PM	TGYM	TGYM	MW	Folda	TSC Trinidad
22266	PED	2037	102	VS: Women's Basketball	1	19-Aug-24	9-Dec-24	0400PM	0600PM	TGYM	TGYM	MWF	Hugins	TSC Trinidad
22632	PED	1001	102	Cond. Lab: Women's Basketball	1	19-Aug-24	9-Dec-24	0400PM	0600PM	TGYM	TGYM	TR	Hugins	TSC Trinidad
22267	PED	2037	104	VS: Men's Soccer	1	19-Aug-24	9-Dec-24	0700PM	0900PM	TGYM	TGYM	MWF	Freeman	TSC Trinidad
22679	PED	1001	104	Cond. Lab: Men's Soccer	1	19-Aug-24	9-Dec-24	0700PM	0900PM	TGYM	TGYM	TR	Freeman	TSC Trinidad
22268	PED	2037	105	VS: Women's Soccer	1	19-Aug-24	9-Dec-24	0200PM	0400PM	TGYM	TGYM	MWF	Freeman	TSC Trinidad
22635	PED	1001	105	Cond. Lab: Women's Soccer	1	19-Aug-24	9-Dec-24	0200PM	0400PM	TGYM	TGYM	TR	Freeman	TSC Trinidad
22269	PED	2037	106	VS: Women's Softball	1	19-Aug-24	9-Dec-24	0200PM	0300PM		TGYM	MTWR	Swazo	TSC Trinidad
22633	PED	1001	106	Cond. Lab: Women's Softball	1	19-Aug-24	9-Dec-24	0300PM	0400PM	TGYM	TGYM	MTWR	Swazo	TSC Trinidad
22270	PED	2037	107	VS: Baseball	1	19-Aug-24	9-Dec-24	0230PM	0330PM		TGYM	MTWR	Veyna	TSC Trinidad
22636	PED	1001	107	Cond. Lab: Baseball	1	19-Aug-24	9-Dec-24	0600PM	0730PM	TGYM	TGYM	MT	Veyna	TSC Trinidad
22277	PED	2037	108	VS: Volleyball	1	19-Aug-24	9-Dec-24	0300PM	0400PM	TGYM	TGYM	MTWR	Salazar	TSC Trinidad
22634	PED	1001	108	Cond. Lab: Volleyball	1	19-Aug-24	9-Dec-24	0200PM	0300PM	TGYM	TGYM	MTWR	Salazar	TSC Trinidad
22677	PED	2037	109	Varsity Sports: Wrestling	1	19-Aug-24	9-Dec-24	0300PM	0500PM	TGYM	TGYM	MTWRF	Lewis	TSC Trinidad
22676	PED	1001	109	Cond. Lab Wrestling	1	19-Aug-24	9-Dec-24	0600AM	0800AM	TGYM	TGYM	MWF	Lewis	TSC Trinidad
22769	PED	2037	110	VS: Women's Wrestling	1	19-Aug-24	9-Dec-24	0200PM	0355PM	TGYM	TGYM	MWF	Lewis	TSC Trinidad
22848	PED	1001	110	Cond. Lab Wrestling	1	19-Aug-24	9-Dec-24	0600AM	0800AM	TGYM	TGYM	MWF	Lewis	TSC Trinidad
22753	PED	1002	100	Weight Training I	1	19-Aug-24	9-Dec-24	1000AM	1050AM	TGYM	TGYM	F	Salbato	TSC Trinidad
<b>POLITICAL SCIENCE</b>														
22669	PSC	1011	H00	American Government: SS1	3	19-Aug-24	9-Dec-24	D2L	D2L	TOFCMP	D2L	D2L	Lanier	TSC Virtual
<b>PSYCHOLOGY</b>														
22579	PSY	1001	100	General Psychology I: SS3	3	19-Aug-24	9-Dec-24	0800AM	0915AM	TDAVIS	105	TR	Herbstritt	TSC Trinidad
22496	PSY	2440	100	Human Growth & Developmnt: SS3	3	3-Sep-24	9-Dec-24	0930AM	1045AM	TDAVIS	105	TR	Herbstritt	TSC Trinidad
22788	PSY	1002	H00	General Psychology II : SS3	3	19-Aug-24	9-Dec-24	TBD	TBD	TOFCMP	D2L	TBD	Tabeling-Garcia	TSC Virtual
22621	PSY	2440	H00	Human Growth & Developmnt: SS3	3	19-Aug-24	9-Dec-24	TBD	TBD	TOFCMP	D2L	TBD	Naranjo	TSC Virtual
22577	PSY	2552	H00	Abnormal Psychology: SS3	3	19-Aug-24	9-Dec-24	TBD	TBD	TOFCMP	D2L	TBD	Tabeling-Garcia	TSC Virtual
22846	PSY	2221	H00	Social Psychology: SS3	3	19-Aug-24	9-Dec-24	1230PM	0145PM	D2L	D2L	TR	Rodriguez	TSC Virtual
22845	PSY	1001	H10	General Psychology I: SS3	3	19-Aug-24	9-Dec-24	1100AM	1150AM	TDAVIS	215	MW	Herbstritt	TSC Trinidad
22847	PSY	1001	H11	General Psychology I: SS3	3	3-Sep-24	9-Dec-24	0100PM	0150PM	TDAVIS	215	MW	Herbstritt	TSC Trinidad
22846	PSY	2221	H00	Social Psychology: SS3	3	19-Aug-24	9-Dec-24	1230PM	0145PM	D2L	D2L	TR	Rodriguez	TSC Virtual
22964	PSY	2440	H01	Human Growth & Developmnt: SS3	3	3-Sep-24	9-Dec-24	D2L	D2L	TOFCMP	D2L	TBD	Naranjo	TSC Virtual
<b>RECREATION</b>														
22651	REC	2021	H10	Recreational Skills	3	3-Sep-24	9-Dec-24	1200PM	1250PM	TSSC	CONF	W	Sloane	TSC Trinidad
22335	REC	1020	100	Intro to Sports Management	3	19-Aug-24	9-Dec-24	1100AM	1150AM	TBOYD	TCRM	MW	Folda	TSC Trinidad
<b>SCIENCE</b>														
30714	SCI	1105	H00	Science in Society: SC2	3	16-Jan-24	8-May-24			TOFCMP	D2L		Cahoone	TSC Virtual

# TRINIDAD CAMPUS FALL 2024 CLASS LIST *(continued)*

IN-PERSON, ON CAMPUS			COMBINATION ON/OFF CAMPUS			ONLINE									
CRN	SUB	Course	Section	Title	Hrs	Start	End	Start	End	Bld	Room	Days	Instructor	Campus	
<b>SOCIOLOGY</b>															
22606	SOC	1001	100	Intro to Sociology I : SS3	3	19-Aug-24	9-Dec-24	1100AM	1215PM	TDAVIS	215	TR	Herbsttritt	TSC Trinidad	
22852	SOC	1001	H00	Intro to Sociology I : SS3	3	3-Sep-24	9-Dec-24	TBD	TBD	TOFCMP	D2L	TBD	Tabeling-Garcia	TSC Virtual	
22851	SOC	1002	H00	Intro to Sociology II: SS3	3	3-Sep-24	9-Dec-24	TBD	TBD	TOFCMP	D2L	TBD	Tabeling-Garcia	TSC Virtual	
<b>THEATRE</b>															
22027	THE	1005	100	Theatre Appreciation: AH1	3	19-Aug-24	9-Dec-24	0100PM	0150PM	TMC	THEA	MWF	Reorda	TSC Trinidad	
22028	THE	1005	101	Theatre Appreciation: AH1	3	3-Sep-24	9-Dec-24	1230PM	0145PM	TMC	THEA	TR	Reorda	TSC Trinidad	
22535	THE	1011	100	Acting I	3	19-Aug-24	9-Dec-24	0330PM	0445PM	TMC	THEA	MW	Reorda	TSC Trinidad	
22830	THE	1016	100	Technical Theatre	3	19-Aug-24	9-Dec-24	0200PM	0315PM	TMC	THEA	MW	Smith	TSC Trinidad	
22831	THE	1029	100	Intro to the Entertainment Industry	3	19-Aug-24	9-Dec-24	0200PM	0315PM	TMC	THEA	TR	Smith	TSC Trinidad	
22489	THE	1008	H10	Theatre Script Analysis: AH1	3	19-Aug-24	9-Dec-24	1000AM	1050AM	TMC	THEA	MW	Reorda	TSC Trinidad	
22779	THE	2011	H10	Dev of Theatre Grk-Renn: AH1	3	19-Aug-24	9-Dec-24	1100AM	1150AM	TMC	THEA	MW	Reorda	TSC Trinidad	
<b>WELDING</b>															
22454	WEL	1002	100	Oxy-fuel Joining Processes	4	19-Aug-24	9-Dec-24	0925AM	1150AM	TBV	308	MT	Sanchez	TSC Trinidad	
22455	WEL	1013	100	Oxyfuel and Plasma Cutting	2	19-Aug-24	9-Dec-24	0800AM	0920AM	TBV	308	MT	Sanchez	TSC Trinidad	
22456	WEL	1021	100	Structural Welding I	3	19-Aug-24	9-Dec-24	1230PM	0230PM	TBV	201A	MT	Sanchez	TSC Trinidad	
22457	WEL	1025	100	Intro-Gas Metal Arc Welding	4	19-Aug-24	9-Dec-24	0800AM	1030AM	TBV	308	WR	Sanchez	TSC Trinidad	
22336	WEL	1035	100	Tig Welding for Gunsmiths	2	19-Aug-24	9-Dec-24	0800AM	1130AM	TBV	308	F	Sanchez	TSC Trinidad	
22458	WEL	2003	100	Flux Cored Arc Welding I	4	19-Aug-24	9-Dec-24	1040AM	0110PM	TBV	308	WR	Sanchez	TSC Trinidad	
22481	OSH	1310	H00	10HR Constructn Industry Stnds		19-Aug-24	9-Dec-24	D2L	D2L	D2L	D2L	D2L	STAFF	TSC Virtual	

NOTES:

---



---



---



---



---



---



---

## BUILDING CODES

<b>Trinidad Campus ~ Trinidad, CO</b>		<b>TMC</b>	Massari Performing Arts Center
<b>TBERG</b>	Berg Administration	<b>TMULL</b>	Mullen Building
<b>TBV</b>	Banta Vocational Building	<b>TTCDD</b>	Democracy Drive
<b>TBOYD</b>	Boyd Technology Building	<b>TRNGE</b>	Gun Range
<b>TBOYD TCRM</b>	Boyd Technology Classroom	<b>TSSC</b>	Sullivan Student Center
<b>TDAVIS</b>	Davis Science Building	<b>Valley Campus ~ Alamosa, CO</b>	
<b>TDOWH</b>	Latuda Hall	<b>###</b>	Main Building, Valley Campus
<b>TEPC</b>	Epic Building - Freedom Road	<b>AHSB</b>	Allied Health Sciences Building
<b>TGYM</b>	Scott Gymnasium	<b>RMLT Campus ~ Colorado Springs, CO</b>	
<b>THOSP</b>	Mt. San Rafael Hospital	<b>TOFCMP</b>	Rocky Mountain Line Tech, Colorado Springs
<b>TLC</b>	Learning Center		
<b>TLIB</b>	Freudenthal Memorial Library		
<b>TLIB SMRM A, B</b>	Library Seminar Rooms		



# VALLEY CAMPUS FALL 2024 CLASS LIST

## IN-PERSON, ON CAMPUS

## COMBINATION ON/OFF CAMPUS

## ONLINE

CRN	SUB	Course	Section	Title	Hrs	Start	End	Start	End	Bld	Room	Days	Instructor	Campus
<b>ACCOUNTING</b>														
22536	ACC	1001	H00	Fundamentals of Accounting	3	3-Sep-24	9-Dec-24	0630PM	0730PM	TOFCMP	D2L	M	Rigdon	TSC Virtual
22344	ACC	1021	H00	Accounting Principles I	4	19-Aug-24	9-Dec-24	0200PM	0315PM	TOFCMP	D2L	TR	Rigdon	TSC Virtual
<b>AGRICULTURE</b>														
22274	AGE	1102	H00	Agriculture Economics: GT-SS1	3	19-Aug-24	9-Dec-24	TBA	TBA	TOFCMP	D2L	TBA	Wiley	TSC Virtual
22275	AGE	2105	H00	Farm and Ranch Management	3	19-Aug-24	9-Dec-24	TBA	TBA	TOFCMP	D2L	TBA	Wiley	TSC Virtual
22413	AGE	2108	H00	Agricultural Finance	3	19-Aug-24	9-Dec-24	TBA	TBA	TOFCMP	D2L	TBA	Wiley	TSC Virtual
22291	AGY	1100	H00	General Crop Production	4	19-Aug-24	9-Dec-24	TBA	TBA	TOFCMP	D2L	TBA	Stillings	TSC Virtual
22272	ASC	1100	H00	Animal Sciences	3	19-Aug-24	9-Dec-24	TBA	TBA	TOFCMP	D2L	TBA	Stillings	TSC Virtual
22382	RAM	2005	H00	Range Management	3	19-Aug-24	9-Dec-24	TBA	TBA	TOFCMP	D2L	TBA	Stillings	TSC Virtual
<b>ART</b>														
22443	ART	1110	PH6	Art Appreciation: AH1	3	19-Aug-24	9-Dec-24	0800AM	0915AM	TVC	219	R	Reiling	TSC Alamosa
22513	ART	1110	H00	Art Appreciation: AH1	3	3-Sep-24	9-Dec-24	0900AM	0950AM	TOFCMP	D2L	F	Reiling	TSC Virtual
22837	ART	1111	PH6	Art Hist Ancient/ Mediev: AH1	3	19-Aug-24	9-Dec-24	0800AM	0915AM	TVC	219	T	Reiling	TSC Alamosa
<b>AUTOMOTIVE</b>														
22292	ASE	1002	200	Intro to the Automotive Shop	2	19-Aug-24	5-Sep-24	0930AM	1230PM	TORT		MTWRF	Kingery	Alamosa Misc
22611	ASE	1020	200	Basic Auto Electricity	2	19-Aug-24	5-Sep-24	100PM	0400PM	TORT		MTWR	Kingery	Alamosa Misc
22838	ASE	1050	200	Manual Drive Train/Axel	2	9-Sep-24	2-Oct-24	0100PM	0300PM	TORT		MTWR	Kingery	TSC Alamosa
22839	ASE	1051	200	Manual Trans/Transaxle & Clutch I	2	3-Oct-24	30-Oct-24	0100PM	0330PM	TORT		MTWR	Kingery	TSC Alamosa
22840	ASE	1052	200	Manual Trans/Transaxle & Clutch II	2	31-Oct-24	2-Dec-24	0100PM	0300PM	TORT		MTWR	Kingery	TSC Alamosa
22841	ASE	2050	200	Automatic Transmison/Tranaxle Svc	1	9-Sep-24	24-Sep-24	1000AM	1200PM	TORT		MTWR	Kingery	TSC Alamosa
22842	ASE	2051	200	Automotive Transmison & Repair	3	25-Sep-24	28-Oct-24	1000AM	1200PM	TORT		MTWR	Kingery	TSC Alamosa
22843	ASE	2035	200	Driveability and Diagnosis	2	29-Oct-24	27-Nov-24	1000AM	1200PM	TORT		MTWR	Kingery	TSC Alamosa
<b>BIOLOGY</b>														
22305	BIO	2101	200	Human Anatomy&Phys I w/Lab:SC1	4	19-Aug-24	9-Dec-24	0800AM	0915AM	TVC	103	MW	Wittler	TSC Alamosa
22305	BIO	2101	200	Human Anatomy&Phys I w/Lab:SC1	4	19-Aug-24	9-Dec-24	1000AM	1230PM	TVC	223	W	Wittler	TSC Alamosa
22450	BIO	2101	201	Human Anatomy&Phys I w/Lab:SC1	4	19-Aug-24	9-Dec-24	1000AM	1230PM	TVC	223	M	Wittler	TSC Alamosa
22450	BIO	2101	201	Human Anatomy&Phys I w/Lab:SC1	4	19-Aug-24	9-Dec-24	0800AM	0915AM	TVC	103	MW	Wittler	TSC Alamosa
22447	BIO	2102	200	Human Anatomy&Phys IIw/Lab:SC1	4	19-Aug-24	9-Dec-24	1000AM	1220PM	TVC	223	T	Wittler	TSC Alamosa
22447	BIO	2102	200	Human Anatomy&Phys IIw/Lab:SC1	4	19-Aug-24	9-Dec-24	0800AM	0915AM	TVC	208	TR	Wittler	TSC Alamosa
22422	BIO	1006	200	Basic Anatomy and Physiology	4	19-Aug-24	9-Dec-24	1230PM	0215PM	TVC	209	TR	Wittler	TSC Alamosa
22681	BIO	1111	H00	Gen College Biology I/Lab: SC1	5	19-Aug-24	9-Dec-24	D2L	D2L	TOFCMP	D2L	D2L	Cahoone	TSC Virtual
22781	BIO	2102	H00	Human Anatomy&Phys IIw/Lab:SC1	4	19-Aug-24	9-Dec-24	D2L	D2L	TOFCMP	D2L	D2L	Walker	TSC Virtual
22773	BIO	2116	H00	Pathophysiology	4	19-Aug-24	9-Dec-24	0600PM	0750PM	TOFCMP	D2L	M	Moniot	TSC Virtual
<b>BUSINESS</b>														
22534	BUS	1015	H00	Introduction to Business	3	3-Sep-24	9-Dec-24	1200PM	1250PM	TDAVIS	215	F	Velasquez	TSC Trinidad
22971	BUS	1002	H00	Entrepreneurial Operations	3	3-Sep-24	9-Dec-24	0600PM	0830PM	TOFCMP	D2L	W	Velasquez	TSC Virtual
22686	BUS	1021	P60	Basic Workplace Skills	1	3-Sep-24	9-Dec-24	0745AM	0945AM	TVC	219	F	Maxwell	TSC Alamosa
22968	BUS	2016	H20	Legal Environment of Business	3	19-Aug-24	9-Dec-24	0200PM	0320PM	TVC	214	MW	Hammer	TSC Alamosa
22012	BUS	2026	H10	Business Statistics	3	3-Sep-24	9-Dec-24	0930AM	1045AM	TDAVIS	209	TR	Zverev	TSC Alamosa
22972	BUS	2017	H00	Business Communications	3	19-Aug-24	9-Dec-24	0800AM	0850AM	TOFCMP	D2L	MWF	Velasquez	TSC Virtual
<b>COMPUTER INFORMATION SYSTEMS</b>														
22804	CNG	1031	H00	Prin of Information Assurance	3	19-Aug-24	9-Dec-24	0900AM	0950AM	TOFCMP	D2L	W	Velasquez	TSC Trinidad
22973	CIS	1018	H20	Intro PC Applications	3	3-Sep-24	9-Dec-24	0930AM	1050AM	TVC	206	TR	Rasmussen	TSC Alamosa
<b>COMMUNICATION</b>														
22744	COM	1150	H20	Public Speaking	3	19-Aug-24	9-Dec-24	0930AM	1045AM	TVC	103	MW	Geraci	TSC Alamosa
22009	COM	1150	H00	Public Speaking	3	3-Sep-24	9-Dec-24	D2L	D2L	TOFCMP	D2L	R	Hamilton	TSC Virtual
22956	COM	1250	H00	Interpersonal Comm: SS3	3	3-Sep-24	9-Dec-24	D2L	D2L	TOFCMP	D2L	D2L	Hamilton	TSC Virtual

# VALLEY CAMPUS FALL 2024 CLASS LIST (continued)

IN-PERSON, ON CAMPUS			COMBINATION ON/OFF CAMPUS		ONLINE										
CRN	SUB	Course	Section	Title	Hrs	Start	End	Start	End	Bld	Room	Days	Instructor	Campus	
<b>CONSTRUCTION</b>															
22780	CON	1057	200	NCCER Core	5	21-Aug-24	18-Sep-24	0800AM	1200PM	TVC	211	MTWRF	Martinez	TSC Alamosa	
22775	CAR	1070	200	Clinical:Construction Lab I	3	21-Aug-24	18-Sep-24	0100PM	0500PM	TOFCMP	TBA	MTWRF	Martinez	TSC Misc.	
22853	CON	1057	201	NCCER Core	5	25-Sep-24	20-Oct-24	0800AM	1200PM	TVC	211	MTWRF	Martinez	TSC Alamosa	
22854	CAR	1070	201	Clinical:Construction Lab I	3	25-Sep-24	20-Oct-24	0100PM	0500PM	TOFCMP	TBA	MTWRF	Martinez	TSC Misc.	
22855	CON	1057	202	NCCER Core	5	30-Oct-24	29-Nov-24	0800AM	1200PM	TVC	211	MTWRF	Martinez	TSC Alamosa	
22856	CAR	1070	202	Clinical:Construction Lab I	3	30-Oct-24	29-Nov-24	0100PM	0500PM	TOFCMP	TBA	MTWRF	Martinez	TSC Misc.	
<b>COSMETOLOGY</b>															
22642	COS	1003	H02	Intro Hair and Scalp	1	19-Aug-24	9-Dec-24	10:00AM	10:55AM	TOFCMP	D2L	F	Sandoval	TSC Virtual	
22643	COS	1010	H02	Intro Color	2	19-Aug-24	9-Dec-24	8:00AM	9:55AM	TVC	117	F	Sandoval	TSC Virtual	
22613	COS	1011	200	Inter I Color	2	19-Aug-24	9-Dec-24	0900AM	0955AM	TVC	107	TR	Presley	TSC Alamosa	
22644	COS	1020	H02	Intro Cutting	2	19-Aug-24	9-Dec-24	1:00PM	2:55PM	TVC	117	F	Sandoval	TSC Virtual	
22614	COS	1021	200	Inter I Cutting	2	19-Aug-24	9-Dec-24	0200PM	0255PM	TVC	117	MW	Varela	TSC Alamosa	
22645	COS	1030	H02	Intro Styling	2	19-Aug-24	9-Dec-24	3:00PM	4:55PM	TVC	117	F	Sandoval	TSC Virtual	
22615	COS	1031	200	Inter I Styling	2	19-Aug-24	9-Dec-24	1000AM	1155AM	TVC	120	MW	Sandoval	TSC Alamosa	
22646	COS	1040	H02	Intro to Chemical Texture	1	19-Aug-24	9-Dec-24	10:00AM	10:55AM	TVC	117	F	Sandoval	TSC Virtual	
22552	COS	1041	200	Intermed I: Chemical Texture	1	19-Aug-24	9-Dec-24	0900AM	0955AM	TVC	117	W	Sandoval	TSC Alamosa	
22647	COS	1050	H02	Laws, Rules, and Regulations	1	19-Aug-24	9-Dec-24	D2L	D2L	TOFCMP	D2L	F	Sandoval	TSC Virtual	
22648	COS	1060	H02	Intro to Infection Control	2	19-Aug-24	9-Dec-24	D2L	D2L	TOFCMP	D2L	F	Sandoval	TSC Virtual	
22817	COS	1060	H00	Intro to Infection Control	2	19-Aug-24	9-Dec-24	TBA	D2L	TOFCMP	D2L	F	Sandoval	TSC Virtual	
22649	COS	1061	H02	Inter I: Infection Control	1	19-Aug-24	9-Dec-24	11:00AM	11:55AM	TVC	117	W	Sandoval	TSC Virtual	
22551	COS	2003	200	Inter I: Hair and Scalp	1	19-Aug-24	9-Dec-24	0800AM	0855AM	TVC	117	M	Varela	TSC Alamosa	
22345	COS	2010	200	Inter II Color	2	19-Aug-24	9-Dec-24	1000AM	1200PM	TVC	117	MW	Sandoval	TSC Alamosa	
22434	COS	2011	200	Adv Color	2	19-Aug-24	9-Dec-24	1000AM	1055AM	TVC	117	TR	Presley	TSC Alamosa	
22427	COS	2020	200	Inter II Cutting	2	19-Aug-24	9-Dec-24	0300PM	0355PM	TVC	117	MW	Varela	TSC Alamosa	
22349	COS	2021	200	Adv Cutting	2	19-Aug-24	9-Dec-24	1000AM	1055AM	TVC	117	MW	Varela	TSC Alamosa	
22350	COS	2030	200	Inter II Styling	2	19-Aug-24	9-Dec-24	0100PM	0155PM	TVC	206	MW	Varela	TSC Alamosa	
22351	COS	2031	200	Adv Styling	1	19-Aug-24	9-Dec-24	0800AM	0855AM	TVC	107	W	Varela	TSC Alamosa	
22352	COS	2040	200	Intermediate II: Chem Texture	1	19-Aug-24	9-Dec-24	1100AM	1155AM	TVC	120	T	Sandoval	TSC Alamosa	
22353	COS	2041	200	Advanced Chemical Texture	1	19-Aug-24	9-Dec-24	1100AM	1155AM	TVC	117	R	Varela	TSC Alamosa	
22650	COS	2050	H02	Bus Mgmt/Per Skills/Ethics	1	19-Aug-24	9-Dec-24	TBA	TBA	TOFCMP	D2L	F	Presley	TSC Alamosa	
22354	COS	2060	200	Inter II: Infection Control	2	19-Aug-24	9-Dec-24	0200PM	0255PM	TVC	120	TR	Sandoval	TSC Alamosa	
22355	COS	2061	200	Adv Infection Control	1	19-Aug-24	9-Dec-24	0300PM	0355PM	TVC	117	T	Sandoval	TSC Alamosa	
22772	COS	2062	200	Adv II Disinfect/Sanitiz/Safety	3	19-Aug-24	9-Dec-24	8:00AM	9:55AM	TVC	117	TR	Sandoval	TSC Alamosa	
22425	COS	2088	200	Practicum	3	19-Aug-24	9-Dec-24	0400PM	0525PM	TVC	117	TR	Presley	TSC Alamosa	
<b>DENTAL ASSISTANT</b>															
22431	DEA	1001	200	Dental Terminology	1	19-Aug-24	9-Dec-24	0600PM	0655PM	TVC	221	R	Sisneros	TSC Alamosa	
22431	DEA	1001	200	Dental Terminology	1	19-Aug-24	9-Dec-24	0600PM	0655PM	TVC	221	R	Benavidez	TSC Alamosa	
22432	DEA	1011	200	Intro to Dental Practices	1	19-Aug-24	9-Dec-24	0600PM	0655PM	TVC	221	T	Benavidez	TSC Alamosa	
22432	DEA	1011	200	Intro to Dental Practices	1	19-Aug-24	9-Dec-24	0600PM	0655PM	TVC	221	T	Sisneros	TSC Alamosa	
22429	DEA	1015	200	Infection Control	3	19-Aug-24	9-Dec-24	0700PM	0900PM	TVC	221	T	Sisneros	TSC Alamosa	
22429	DEA	1015	200	Infection Control	3	19-Aug-24	9-Dec-24	0800AM	1200PM	TOFCMP		S	Benavidez	TSC Alamosa	
22429	DEA	1015	200	Infection Control	3	19-Aug-24	9-Dec-24	0700PM	0900PM	TVC	221	T	Benavidez	TSC Alamosa	
22429	DEA	1015	200	Infection Control	3	19-Aug-24	9-Dec-24	0800AM	1200PM	TOFCMP		S	Sisneros	TSC Alamosa	
22430	DEA	1023	200	Dental Materials I	3	19-Aug-24	9-Dec-24	0700PM	0900PM	TVC	221	R	Sisneros	TSC Alamosa	
22430	DEA	1023	200	Dental Materials I	3	19-Aug-24	9-Dec-24	0100PM	0500PM	TOFCMP		S	Sisneros	TSC Alamosa	
22430	DEA	1023	200	Dental Materials I	3	19-Aug-24	9-Dec-24	0100PM	0500PM	TOFCMP		S	Benavidez	TSC Alamosa	
22430	DEA	1023	200	Dental Materials I	3	19-Aug-24	9-Dec-24	0700PM	0900PM	TVC	221	R	Benavidez	TSC Alamosa	
<b>EARLY CHILDHOOD</b>															
22018	ECE	1011	H00	Intro to Early Childhood Educ	3	19-Aug-24	9-Dec-24	0600PM	0730PM	TVC	214	W	Plane	TSC Alamosa	
22609	ECE	1045	H00	Intro to ECE Techniques	3	19-Aug-24	9-Dec-24	0600PM	0730PM	TVC	210	M	Plane	TSC Alamosa	
22356	ECE	1111	H00	Infant/Toddler Theory/Practice	3	19-Aug-24	9-Dec-24	0445PM	0555PM	TVC	214	W	Briones	TSC Alamosa	
22726	ECE	1125	H00	Infant/Toddler Lab Tech	3	19-Aug-24	9-Dec-24	0430PM	0555PM	TVC	210	M	Briones	TSC Alamosa	
22343	ECE	2401	H00	Admin of ECE Programs	3	19-Aug-24	9-Dec-24	0600PM	0730PM	TVC	210	T	Briones	TSC Alamosa	
22019	ECE	2641	H00	Creativity and the Young Child	3	19-Aug-24	9-Dec-24	0430PM	0555PM	TVC	210	T	Briones	TSC Alamosa	
22018	ECE	1011	H00	Intro to Early Childhood Educ	3	19-Aug-24	9-Dec-24	0600PM	0730PM	TVC	214	W	Plane	TSC Alamosa	
22609	ECE	1045	H00	Intro to ECE Techniques	3	19-Aug-24	9-Dec-24	0600PM	0730PM	TVC	210	M	Plane	TSC Alamosa	
22356	ECE	1111	H00	Infant/Toddler Theory/Practice	3	19-Aug-24	9-Dec-24	0445PM	0555PM	TVC	214	W	Briones	TSC Alamosa	
22726	ECE	1125	H00	Infant/Toddler Lab Tech	3	19-Aug-24	9-Dec-24	0430PM	0555PM	TVC	210	M	Briones	TSC Alamosa	
22343	ECE	2401	H00	Admin of ECE Programs	3	19-Aug-24	9-Dec-24	0600PM	0730PM	TVC	210	T	Briones	TSC Alamosa	
22019	ECE	2641	H00	Creativity and the Young Child	3	19-Aug-24	9-Dec-24	0430PM	0555PM	TVC	210	T	Briones	TSC Alamosa	



# VALLEY CAMPUS FALL 2024 CLASS LIST (continued)

IN-PERSON, ON CAMPUS			COMBINATION ON/OFF CAMPUS			ONLINE									
CRN	SUB	Course	Section	Title	Hrs	Start	End	Start	End	Bld	Room	Days	Instructor	Campus	
<b>ECONOMICS</b>															
22572	ECO	2001	P70	Prin of Macroeconomics: SS1	3	3-Sep-24	9-Dec-24	0735AM	0845AM	TDAVIS	215	TR	Velasquez	TSC Trinidad	
<b>EDUCATION</b>															
22495	EDU	2611	P60	Teaching, Learning & Technology	3	19-Aug-24	9-Dec-24	0530PM	0800PM	TVC	122	R	Boone	TSC Alamosa	
<b>EMERGENCY MEDICAL</b>															
22529	EMS	1021	250	EMT Fundamentals	3	19-Aug-24	9-Dec-24	0600PM	1000PM	TVC	AHSB-10	MW	Henson	TSC Alamosa	
22529	EMS	1021	250	EMT Fundamentals	3	19-Aug-24	9-Dec-24	0800AM	0500PM	TVC	AHSB-10	S	Henson	TSC Alamosa	
22530	EMS	1022	250	EMT Medical Emergencies	4	18-Sep-24	29-Oct-24	0600PM	1000PM	TVC	AHSB-10	MW	Henson	TSC Alamosa	
22530	EMS	1022	250	EMT Medical Emergencies	4	18-Sep-24	29-Oct-24	0800AM	0500PM	TVC	AHSB-10	S	Henson	TSC Alamosa	
22531	EMS	1023	250	EMT Trauma Emergencies	2	30-Oct-24	14-Nov-24	0600PM	1000PM	TVC	AHSB-10	MW	Henson	TSC Alamosa	
22531	EMS	1023	250	EMT Trauma Emergencies	2	30-Oct-24	14-Nov-24	0800AM	0500PM	TVC	AHSB-10	S	Henson	TSC Alamosa	
22532	EMS	1024	250	EMT Special Considerations	2	14-Nov-24	12-Dec-24	0800AM	0500PM	TVC	AHSB-10	S	Henson	TSC Alamosa	
22532	EMS	1024	250	EMT Special Considerations	2	14-Nov-24	12-Dec-24	0600PM	1000PM	TVC	AHSB-10	MWS	Henson	TSC Alamosa	
22605	EMS	1026	251	EMT Basic Refresher	2	19-Aug-24	9-Dec-24	0600PM	1000PM	TVC	AHSB-10	MW	Henson	TSC Alamosa	
22533	EMS	1070	250	EMT Clinical	1	18-Sep-24	12-Dec-24	TBA	TBA	TBA	TBA	TBA	Henson	TSC Alamosa	
22638	EMS	1125	200	AEMT Fundamentals	2			0500PM	0900PM	TVC	AHSB-10	TRS	Hendricks	TSC Alamosa	
22639	EMS	1129	200	AEMT Pharmacology	1			0500PM	0900PM	TVC	AHSB-10	TRS	Hendricks	TSC Alamosa	
<b>ENGLISH</b>															
22010	ENG	1021	200	English Composition I:CO1	3	19-Aug-24	9-Dec-24	1100AM	1215PM	TVC	210	TR	Geraci	TSC Alamosa	
22592	ENG	1022	200	English Composition II:CO2	3	19-Aug-24	9-Dec-24	1100AM	1150AM	TVC	210	MW	Geraci	TSC Alamosa	
22428	ENG	1021	H00	English Composition I:CO1	3	19-Aug-24	9-Dec-24	1230PM	0145PM	TVC	103	TR	Geraci	TSC Virtual	
<b>ENVIRONMENTAL SCIENCE</b>															
22575	ENV	1010	H00	Natural Disasters: SC2	3	19-Aug-24	9-Dec-24	D2L	D2L	TOFCMP	D2L	D2L	Cahoone	TSC Virtual	
22574	ENV	1111	H00	Environmental Sci w/Lab: SC1	4	3-Sep-24	9-Dec-24	D2L	D2L	TOFCMP	D2L	D2L	Cahoone	TSC Virtual	
<b>HISTORY</b>															
22962	HIS	2105	P60	Women in U.S. History: HI1	3	19-Aug-24	9-Dec-24	930AM	1045AM	TVC	122	TR	Boone	TSC Alamosa	
22965	HIS	2200	P60	History of Latin America	3	19-Aug-24	9-Dec-24	1100AM	1215PM	TVC	122	TR	Boone	TSC Alamosa	
22514	HIS	1210	H00	US History to Reconst: HI1	3	19-Aug-24	9-Dec-24	0200PM	0250PM	TOFCMP	D2L	F	Eades	TSC Virtual	
22777	HIS	1210	PH6	US History to Reconst: HI1	3	19-Aug-24	9-Dec-24	0900AM	0950AM	TVC	210	MW	Boone	TSC Alamosa	
22966	HIS	1110	P60	The World: Antiquity-1500: HI1	3	19-Aug-24	9-Dec-24	0800AM	0915AM	TVC	122	TR	Boone	TSC Alamosa	
<b>HEALTH PROFESSIONAL</b>															
22728	HPR	1039	PH7	Medical Terminology	2	19-Aug-24	9-Dec-24	0300PM	0430PM	TVC	103	R	O'Brien	TSC Alamosa	
22603	HPR	1039	H00	Medical Terminology	2	19-Aug-24	9-Dec-24	1100AM	1155AM	TOFCMP	D2L	TR	Medina	TSC Virtual	
<b>HEALTH &amp; WELLNESS</b>															
22604	HWE	1050	H00	Human Nutrition	3	19-Aug-24	9-Dec-24	0900AM	1025AM	TOFCMP	D2L	TR	Medina	TSC Virtual	
<b>HUMAN PERFORMANCE</b>															
22620	HPE	2000	H00	Perspectives in PE & Sport	3	19-Aug-24	9-Dec-24	0100PM	0150PM	TOFCMP	D2L	F	Sloane	TSC Virtual	
<b>HUMANITIES</b>															
22829	HUM	1021	H20	Humanities: Early Civ: AH2	3	19-Aug-24	9-Dec-24	1100AM	1215PM	TVC	209	TR	Smith	TSC Alamosa	
22959	HUM	1015	H00	World Mythology: AH2	3	3-Sep-24	9-Dec-24	D2L	D2L	D2L	D2L	D2L	HANK	TSC Virtual	
22488	HUM	1021	H00	Humanities: Early Civ: AH2	3	3-Sep-24	9-Dec-24	D2L	D2L	D2L	D2L	D2L	HANK	TSC Virtual	
22953	HUM	1015	H00	World Mythology: AH2	3	19-Aug-24	9-Dec-24	D2L	D2L	TOFCMP	D2L	D2L	Smith	TSC Virtual	
<b>LAW ENFORCEMENT ACADEMY</b>															
22832	LEA	1001	200	Basic Police Academy I	6	19-Aug-24	9-Dec-24	0600PM	1000PM	TSLVLE	TBA	TWR	Kindschuh	Alamosa Misc	
22833	LEA	1005	200	Basic Law	8	19-Aug-24	9-Dec-24	0600PM	1000PM	TSLVLE	TBA	TWR	Kindschuh	Alamosa Misc	
22844	LEA	1006	200	Arrest Control Techniques	3	19-Aug-24	9-Dec-24	0800AM	0500PM	TSLVLE	TBA	SU	Kindschuh	Alamosa Misc	
<b>MANAGEMENT</b>															
22978	MAN	2000	H20	Human Resource Management	3	19-Aug-24	9-Dec-24	0800AM	0920AM	TVC	214	MW	Hammer	TSC Alamosa	
22980	MAN	1002	H20	Ethics and Values	1	19-Aug-24	9-Dec-24	0930AM	1050AM	TVC	214	M	Hammer	TSC Alamosa	
22982	MAN	1017	H20	Time Management	1	19-Aug-24	9-Dec-24	0930AM	1050AM	TVC	214	W	Hammer	TSC Alamosa	
22984	MAN	2026	H20	Principles of Management	3	3-Sep-24	9-Dec-24	TOFCMP		TOFCMP	D2L		Hammer	TSC Alamosa	

# VALLEY CAMPUS FALL 2024 CLASS LIST (continued)

IN-PERSON, ON CAMPUS			COMBINATION ON/OFF CAMPUS		ONLINE										
CRN	SUB	Course	Section	Title	Hrs	Start	End	Start	End	Bld	Room	Days	Instructor	Campus	
<b>MARKETING</b>															
22976	MAR	1060	H20	Customer Service	3	3-Sep-24	9-Dec-24	1100AM	1215PM	TVC	214	MW	Hammer	TSC Alamosa	
22977	MAR	2016	H20	Principles of Marketing	3	3-Sep-24	9-Dec-24	1230PM	0145PM	TVC	214	MW	Hammer	TSC Alamosa	
<b>MATHEMATICS</b>															
22746	MAT	1140	200	Career Math:	3	19-Aug-24	9-Dec-24	0900AM	0950AM	TVC	209	MTW	Zverev	TSC Alamosa	
22748	MAT	1240	200	Math for Liberal Arts: MA1	4	19-Aug-24	9-Dec-24	0800AM	0850AM	TVC	209	MTWR	Zverev	TSC Alamosa	
22747	MAT	1260	200	Intro to Statistics: MA1	3	19-Aug-24	9-Dec-24	0100PM	0230PM	TVC	208	TR	Zverev	TSC Alamosa	
22750	MAT	1340	200	College Algebra: MA1	4	19-Aug-24	9-Dec-24	1000AM	1050AM	TVC	209	MTWR	Zverev	TSC Alamosa	
22749	MAT	1440	200	Pre-Calculus: MA1	5	19-Aug-24	9-Dec-24	1200PM	1250PM	TVC	208	MTWR	Zverev	TSC Alamosa	
22612	MAT	1260	H00	Intro to Statistics: MA1	3	19-Aug-24	9-Dec-24	D2L	D2L	TOFCMP	D2L	D2L	Emerick	TSC Virtual	
22974	MAT	1160	H20	Financial Mathematics	3	3-Sep-24	9-Dec-24	1100AM	1220AM	TVC		TR	Zverev	TSC Alamosa	
<b>MEDICAL ASSISTING PROFESSIONAL</b>															
22421	MAP	1010	PH7	Medical Office Administration	4	19-Aug-24	9-Dec-24	0330PM	0730PM	TVC	103	T	O'Brien	TSC Alamosa	
22448	MAP	1020	PH7	Medical Office Financial Mgmt	4	19-Aug-24	9-Dec-24	1255PM	0330PM	TVC	103	W	O'Brien	TSC Alamosa	
22420	MAP	1083	200	Medical Assistant Internship	4	19-Aug-24	9-Dec-24	1100AM	1200PM	TVC	107	R	O'Brien	TSC Alamosa	
22418	MAP	2040	PH7	Medical Assist Clinical Skills	4	19-Aug-24	9-Dec-24	0230PM	0630PM	TVC	103	M	O'Brien	TSC Alamosa	
22419	MAP	2069	PH7	Review- Medical Asst Natl Exam	1	19-Aug-24	9-Dec-24	0100PM	0200PM	TVC	103	M	O'Brien	TSC Alamosa	
<b>NAIL TECHNICIAN</b>															
22281	NAT	1010	200	Intro to Nail Care	3	19-Aug-24	9-Dec-24	0800AM	0925AM	TVC	122	MW	Sandoval	TSC Alamosa	
22358	NAT	1011	200	Inter I Nail Care	2	19-Aug-24	9-Dec-24	0900AM	0955AM	TVC	122	M	Sandoval	TSC Alamosa	
22359	NAT	2010	200	Advanced Nail Care	2	19-Aug-24	9-Dec-24	1000AM	1055AM	TVC	117C	TR	Sandoval	TSC Alamosa	
22360	NAT	2011	200	Nail Enhancements	5	19-Aug-24	9-Dec-24	0100PM	0325PM	TVC	120	TR	Sandoval	TSC Alamosa	
<b>NURSING ASSISTANT</b>															
22666	NUA	1001	201	Nurse Aide Health Care Skills	4	19-Aug-24	4-Oct-24	0500PM	0900PM	TVC	AHSB-11	MTW	Mobley	TSC Alamosa	
22365	NUA	1001	252	Nurse Aide Health Care Skills	4	14-Oct-24	6-Dec-24	0500PM	0900PM	TVC	AHSB-11	MTW	Mobley	TSC Alamosa	
22005	NUA	1070	201	Nurse Aide Clinical Experience	1	6-Sep-24	4-Oct-24	0530AM	0330PM	TOFCMP	TBA	UFS	Mobley	TSC Alamosa	
22667	NUA	1070	202	Nurse Aide Clinical Experience	1	1-Nov-24	6-Dec-24	0530AM	0330PM	TOFCMP	TBA	UFS	Mobley	TSC Alamosa	
<b>NURSING</b>															
22375	NUR	1001	200	Pharmacology Calculations	1	19-Aug-24	9-Dec-24	0830AM	0920AM	TVC	AHSB-17	F	Wilner	TSC Alamosa	
22416	NUR	1009	200	Fundamentals of Nursing	6	19-Aug-24	9-Dec-24	0800AM	0400PM	TVC	AHSB-17	MWR	Haslett	TSC Alamosa	
22416	NUR	1009	200	Fundamentals of Nursing	6	19-Aug-24	9-Dec-24	0800AM	1130AM	TVC	AHSB-17	T	Haslett	TSC Alamosa	
22002	NUR	1012	200	Basic Concepts of Pharmacology	2	19-Aug-24	9-Dec-24	0930AM	1130AM	TVC	AHSB-17	F	Malouff	TSC Alamosa	
22417	NUR	2006	200	Adv Concepts of Med/Surg NSG I	6.5	19-Aug-24	9-Dec-24	0830AM	1130AM	TVC	AHSB-17	R	Garcia	TSC Alamosa	
22417	NUR	2006	200	Adv Concepts of Med/Surg NSG I	6.5	19-Aug-24	9-Dec-24	0530PM	0600PM	TVC	AHSB-17	MTW	Garcia	TSC Alamosa	
22276	NUR	2011	200	Psychiatric-Mental Health NSG	4	19-Aug-24	9-Dec-24	0900AM	1230PM	TVC	AHSB-17	F	STAFF	TSC Alamosa	
22003	NUR	2012	200	Pharmacology II	2	19-Aug-24	9-Dec-24	1230PM	0230PM	TVC	AHSB-17	R	Garcia	TSC Alamosa	
22522	NUR	3002	H00	Trends in Nursing Practice	3	5-Aug-24	15-Sep-24	D2L	TOFCMP	D2L	D2L	D2L	Cook	TSC Virtual	
22767	NUR	3003	H00	Nursing Research/EBP	3	23-Sep-24	3-Nov-24	D2L	TOFCMP	D2L	D2L	D2L	Talbott	TSC Virtual	
22538	NUR	3005	H00	Emergency Preparedness	3	4-Nov-24	22-Dec-24	D2L	TOFCMP	D2L	D2L	D2L	Medina	TSC Virtual	
22601	NUR	3007	H00	Behavioral Health	3	23-Sep-24	3-Nov-24	D2L	TOFCMP	D2L	D2L	D2L	Hendricks	TSC Virtual	
22586	NUR	4011	H00	Senior Seminar	3	4-Nov-24	22-Dec-24	D2L	TOFCMP	D2L	D2L	D2L	Garcia	TSC Virtual	
<b>PHYSICAL EDUCATION</b>															
22826	PED	2037	202	VS:	1	19-Aug-24	9-Dec-24	0300PM	0550PM	TVC	110	MTWR	Masterson	TSC Valley	
22827	PED	1001	201	Cond. Lab:	1	19-Aug-24	9-Dec-24	0300PM	0550PM	TVC	110	F	Masterson	TSC Valley	
<b>PHYLOSOPHY</b>															
22466	PHI	1011	H00	Intro to Philosophy: AH3	3	19-Aug-24	9-Dec-24	0200PM	0315PM	TOFCMP	D2L	TR	Szerecz	TSC Virtual	
<b>POLITICAL SCIENCE</b>															
22669	PSC	1011	H00	American Government: SS1	3	19-Aug-24	9-Dec-24	D2L	D2L	TOFCMP	D2L	D2L	Lanier	TSC Virtual	



# VALLEY CAMPUS FALL 2024 CLASS LIST *(continued)*

IN-PERSON, ON CAMPUS			COMBINATION ON/OFF CAMPUS				ONLINE							
CRN	SUB	Course	Section	Title	Hrs	Start	End	Start	End	Bld	Room	Days	Instructor	Campus
<b>PSYCHOLOGY</b>														
22621	PSY	2440	H00	Human Growth & Developmnt: SS3	3	19-Aug-24	9-Dec-24	D2L	D2L	TOFCMP	D2L	TBD	Naranjo	TSC Virtual
22577	PSY	2552	H00	Abnormal Psychology: SS3	3	19-Aug-24	9-Dec-24	D2L	D2L	TOFCMP	D2L	TBD	Tabeling-Garcia	TSC Virtual
22964	PSY	2440	H01	Human Growth & Developmnt: SS3	3	3-Sep-24	9-Dec-24	D2L	D2L	TOFCMP	D2L	TBD	Naranjo	TSC Virtual
22788	PSY	1002	H00	General Psychology I: SS3	3	19-Aug-24	9-Dec-24	D2L	D2L	TOFCMP	D2L	TBD	Tabeling-Garcia	TSC Virtual
22846	PSY	2221	H00	Social Psychology: SS3	3	19-Aug-24	9-Dec-24	1230PM	0145PM	D2L	D2L	TR	Rodriguez	TSC Virtual
22001	PSY	1001	200	General Psychology I: SS3	3	19-Aug-24	9-Dec-24	1100AM	1215PM	TVC	109	TR	Rodriguez	TSC Valley
<b>SCIENCE</b>														
22584	SCI	1105	H00	Science in Society: SC2	3	3-Sep-24	9-Dec-24	D2L	D2L	TOFCMP	D2L	D2L	Cahoone	TSC Virtual
<b>SOCIOLOGY</b>														
22852	SOC	1001	H00	Intro to Sociology I : SS3	3	3-Sep-24	9-Dec-24	TBD	TBD	TOFCMP	D2L	TBD	Tabeling-Garcia	TSC Virtual
22851	SOC	1002	H00	Intro to Sociology II: SS3	3	3-Sep-24	9-Dec-24	TBD	TBD	TOFCMP	D2L	TBD	Tabeling-Garcia	TSC Virtual
22828	SOC	1001	100	Intro to Sociology I: SS3	3	19-Aug-24	9-Dec-24	0930AM	1045AM	TVC	109	TR	Rodriguez	TSC Valley
<b>THEATRE</b>														
22578	THE	1005	H00	Theatre Appreciation: AH1	3	3-Sep-24	9-Dec-24	0200PM	0315PM	TOFCMP	D2L	T	Reorda	TSC Virtual
<b>WELDING</b>														
22361	WEL	1002	200	Oxy-fuel Joining Processes	4	19-Aug-24	9-Dec-24	0930AM	1145AM	TVC	101	MW	Exley	TSC Alamosa
22363	WEL	1013	200	Oxyfuel and Plasma Cutting	2	19-Aug-24	9-Dec-24	0800AM	0925AM	TVC	206	MTWR	Exley	TSC Alamosa
22362	WEL	1021	200	Structural Welding I	3	19-Aug-24	9-Dec-24	0100PM	0215PM	TVC	101	MTWR	Exley	TSC Alamosa
22415	WEL	1022	200	Structural Welding II	3	19-Aug-24	9-Dec-24	0230PM	0400PM	TVC	101	TR	Exley	TSC Alamosa
22364	WEL	1024	200	Gas Tungsten Arc Welding I	4	19-Aug-24	9-Dec-24	0930AM	1145AM	TVC	101	TR	Exley	TSC Alamosa
22414	WEL	1025	200	Intro-Gas Metal Arc Welding	4	19-Aug-24	9-Dec-24	0230PM	0400PM	TVC	101	MW	Exley	TSC Alamosa

**NOTES:**

---

---

---

---

---

---

---

---

---

---

---

---

---

---

---

---

---

---

---

---

---

---

---

---

---

---

# CCCONLINE FALL 2024 CLASS LIST

#CRN	SUB	Course	Sect.	Course Description	Hrs	Start	End		Instructor	Campus
22034	ACC	1021	Z11	Accounting Principles I	4	19-Aug-24	8-Dec-24	TONL	STAFF	CO Online @ Consortium
22167	ACC	1021	Z21	Accounting Principles I	4	23-Sep-24	8-Dec-24	TONL	STAFF	CO Online @ Consortium
22032	ACC	1001	C11	Fundamentals of Accounting	3	3-Sep-24	14-Dec-24	TCCONL	STAFF	TSC CCCOnline
22166	ACC	1001	C21	Fundamentals of Accounting	3	7-Oct-24	14-Dec-24	TCCONL	STAFF	TSC CCCOnline
22033	ACC	1015	C11	Payroll Accounting	3	3-Sep-24	14-Dec-24	TCCONL	STAFF	TSC CCCOnline
22300	ACC	1015	C21	Payroll Accounting	3	7-Oct-24	14-Dec-24	TCCONL	STAFF	TSC CCCOnline
22035	ACC	1022	C11	Accounting Principles II	4	3-Sep-24	14-Dec-24	TCCONL	STAFF	TSC CCCOnline
22168	ACC	1022	C21	Accounting Principles II	4	7-Oct-24	14-Dec-24	TCCONL	STAFF	TSC CCCOnline
22301	ACC	1032	C21	Tax Help Colorado	2	7-Oct-24	14-Dec-24	TCCONL	STAFF	TSC CCCOnline
22036	ACC	1035	C11	Spreadsheet Apps/ Accounting	3	3-Sep-24	14-Dec-24	TCCONL	STAFF	TSC CCCOnline
22435	ACC	2026	C11	Cost Accounting	3	3-Sep-24	14-Dec-24	TCCONL	STAFF	TSC CCCOnline
22384	ANT	1001	Z41	Cultural Anthropology: SS3	3	19-Aug-24	6-Oct-24	TONL	STAFF	CO Online @ Consortium
22329	ANT	1003	C11	Intro to Archaeology: SS3	3	3-Sep-24	14-Dec-24	TCCONL	STAFF	TSC CCCOnline
22490	ANT	1003	C21	Intro to Archaeology: SS3	3	7-Oct-24	14-Dec-24	TCCONL	STAFF	TSC CCCOnline
22561	ANT	1003	C51	Intro to Archaeology: SS3	3	4-Nov-24	14-Dec-24	TCCONL	STAFF	TSC CCCOnline
22376	ANT	1005	C11	Bio Anthropology W/Lab: SC1	4	3-Sep-24	14-Dec-24	TCCONL	STAFF	TSC CCCOnline
22377	ANT	1005	C21	Bio Anthropology W/Lab: SC1	4	7-Oct-24	14-Dec-24	TCCONL	STAFF	TSC CCCOnline
22491	ANT	2125	C11	Anth of Religion: SS3	3	3-Sep-24	14-Dec-24	TCCONL	STAFF	TSC CCCOnline
22515	ANT	2125	C21	Anth of Religion: SS3	3	7-Oct-24	14-Dec-24	TCCONL	STAFF	TSC CCCOnline
22038	ART	1110	Z11	Art Appreciation: AH1	3	19-Aug-24	8-Dec-24	TONL	STAFF	CO Online @ Consortium
22170	ART	1110	Z21	Art Appreciation: AH1	3	23-Sep-24	8-Dec-24	TONL	STAFF	CO Online @ Consortium
22306	ART	1110	Z41	Art Appreciation: AH1	3	19-Aug-24	6-Oct-24	TONL	STAFF	CO Online @ Consortium
22318	ART	1110	Z51	Art Appreciation: AH1	3	14-Oct-24	8-Dec-24	TONL	STAFF	CO Online @ Consortium
22039	ART	1111	C11	Art Hist Ancient/ Mediev: AH1	3	3-Sep-24	14-Dec-24	TCCONL	STAFF	TSC CCCOnline
22171	ART	1111	C21	Art Hist Ancient/ Mediev: AH1	3	7-Oct-24	14-Dec-24	TCCONL	STAFF	TSC CCCOnline
22040	ART	1112	C11	Art Hist Renaiss/1900: AH1	3	3-Sep-24	14-Dec-24	TCCONL	STAFF	TSC CCCOnline
22172	ART	1112	C21	Art Hist Renaiss/1900: AH1	3	7-Oct-24	14-Dec-24	TCCONL	STAFF	TSC CCCOnline
22042	AST	1120	C11	Stellar Astronomy w/Lab: SC1	4	3-Sep-24	14-Dec-24	TCCONL	STAFF	TSC CCCOnline
22340	AST	1120	C21	Stellar Astronomy w/Lab: SC1	4	7-Oct-24	14-Dec-24	TCCONL	STAFF	TSC CCCOnline
22041	AST	1110	Z11	Planetary Astronomy w/Lab: SC1	4	19-Aug-24	8-Dec-24	TONL	STAFF	CO Online @ Consortium
22173	AST	1110	Z21	Planetary Astronomy w/Lab: SC1	4	23-Sep-24	8-Dec-24	TONL	STAFF	CO Online @ Consortium
22047	BIO	2101	Z11	Human Anatomy&Phys I w/Lab:SC1	4	19-Aug-24	8-Dec-24	TONL	STAFF	CO Online @ Consortium
22386	BIO	2101	Z21	Human Anatomy&Phys I w/Lab:SC1	4	23-Sep-24	8-Dec-24	TONL	STAFF	CO Online @ Consortium
22043	BIO	1005	C11	Science of Biology w/Lab: SC1	4	3-Sep-24	14-Dec-24	TCCONL	STAFF	TSC CCCOnline
22174	BIO	1005	C21	Science of Biology w/Lab: SC1	4	7-Oct-24	14-Dec-24	TCCONL	STAFF	TSC CCCOnline
22044	BIO	1006	C11	Basic Anatomy and Physiology	4	3-Sep-24	14-Dec-24	TCCONL	STAFF	TSC CCCOnline
22385	BIO	1006	C21	Basic Anatomy and Physiology	4	7-Oct-24	14-Dec-24	TCCONL	STAFF	TSC CCCOnline
22045	BIO	1111	C11	Gen College Biology I/Lab: SC1	5	3-Sep-24	14-Dec-24	TCCONL	STAFF	TSC CCCOnline
22175	BIO	1111	C21	Gen College Biology I/Lab: SC1	5	7-Oct-24	14-Dec-24	TCCONL	STAFF	TSC CCCOnline
22046	BIO	1112	C11	Gen College Biology II/Lab:SC1	5	3-Sep-24	14-Dec-24	TCCONL	STAFF	TSC CCCOnline
22048	BIO	2102	C11	Human Anatomy&Phys IIw/Lab:SC1	4	3-Sep-24	14-Dec-24	TCCONL	STAFF	TSC CCCOnline
22387	BIO	2102	C21	Human Anatomy&Phys IIw/Lab:SC1	4	7-Oct-24	14-Dec-24	TCCONL	STAFF	TSC CCCOnline
22049	BIO	2104	C11	Microbiology w/Lab: SC1	4	3-Sep-24	14-Dec-24	TCCONL	STAFF	TSC CCCOnline
22176	BIO	2104	C21	Microbiology w/Lab: SC1	4	7-Oct-24	14-Dec-24	TCCONL	STAFF	TSC CCCOnline
22050	BIO	2116	C11	Pathophysiology	4	3-Sep-24	14-Dec-24	TCCONL	STAFF	TSC CCCOnline
22388	BIO	2116	C21	Pathophysiology	4	7-Oct-24	14-Dec-24	TCCONL	STAFF	TSC CCCOnline
22720	BUS	1015	Z11	Introduction to Business	3	19-Aug-24	8-Dec-24	TONL	STAFF	CO Online @ Consortium
22177	BUS	1015	Z21	Introduction to Business	3	23-Sep-24	8-Dec-24	TONL	STAFF	CO Online @ Consortium
22307	BUS	1015	Z41	Introduction to Business	3	19-Aug-24	6-Oct-24	TONL	STAFF	CO Online @ Consortium
22319	BUS	1015	Z51	Introduction to Business	3	14-Oct-24	8-Dec-24	TONL	STAFF	CO Online @ Consortium
22178	BUS	1020	Z21	Introduction to E-Commerce	3	23-Sep-24	8-Dec-24	TONL	STAFF	CO Online @ Consortium
22179	BUS	2016	Z21	Legal Environment of Business	3	23-Sep-24	8-Dec-24	TONL	STAFF	CO Online @ Consortium
22180	BUS	2017	Z21	Business Communications	3	23-Sep-24	8-Dec-24	TONL	STAFF	CO Online @ Consortium
22051	BUS	2026	Z11	Business Statistics	3	19-Aug-24	8-Dec-24	TONL	STAFF	CO Online @ Consortium
22181	BUS	2026	Z21	Business Statistics	3	23-Sep-24	8-Dec-24	TONL	STAFF	CO Online @ Consortium

# CCCONLINE FALL 2024 CLASS LIST (continued)

#CRN	SUB	Course	Sect.	Course Description	Hrs	Start	End	TONL	Instructor	Campus
22562	CAD	1101	Z11	Computer Aided Drafting/2D I	3	19-Aug-24	8-Dec-24	TONL	STAFF	CO Online @ Consortium
22055	CHE	1112	Z11	Gen College Chem II/Lab: SC1	5	19-Aug-24	8-Dec-24	TONL	STAFF	CO Online @ Consortium
22299	CHE	1112	Z21	Gen College Chem II/Lab: SC1	5	23-Sep-24	8-Dec-24	TONL	STAFF	CO Online @ Consortium
22057	CIS	1018	Z11	Intro PC Applications	3	19-Aug-24	8-Dec-24	TONL	STAFF	CO Online @ Consortium
22185	CIS	1018	Z21	Intro PC Applications	3	23-Sep-24	8-Dec-24	TONL	STAFF	CO Online @ Consortium
22389	CIS	1018	Z41	Intro PC Applications	3	19-Aug-24	6-Oct-24	TONL	STAFF	CO Online @ Consortium
22184	CIS	1015	C21	Intro to Computer Info Sys	3	7-Oct-24	14-Dec-24	TCCONL	STAFF	TSC CCCOnline
22056	CIS	1015	C41	Intro to Computer Info Sys	3	16-Sep-24	26-Oct-24	TCCONL	STAFF	TSC CCCOnline
22058	CIS	1035	C11	Complete Word Processing	3	3-Sep-24	14-Dec-24	TCCONL	STAFF	TSC CCCOnline
22186	CIS	1035	C21	Complete Word Processing	3	7-Oct-24	14-Dec-24	TCCONL	STAFF	TSC CCCOnline
22059	CIS	1045	C11	Intro to Desktop Database	3	3-Sep-24	14-Dec-24	TCCONL	STAFF	TSC CCCOnline
22060	CIS	1055	C11	Complete Spreadsheets	3	3-Sep-24	14-Dec-24	TCCONL	STAFF	TSC CCCOnline
22061	CIS	2067	C11	Mgmt of Information Systems	3	3-Sep-24	14-Dec-24	TCCONL	STAFF	TSC CCCOnline
22062	CIS	2068	C11	Systems Analysis and Design I	3	3-Sep-24	14-Dec-24	TCCONL	STAFF	TSC CCCOnline
22064	COM	1150	Z11	Public Speaking	3	19-Aug-24	8-Dec-24	TONL	STAFF	CO Online @ Consortium
22320	COM	1150	Z21	Public Speaking	3	23-Sep-24	8-Dec-24	TONL	STAFF	CO Online @ Consortium
22308	COM	1150	Z41	Public Speaking	3	19-Aug-24	6-Oct-24	TONL	STAFF	CO Online @ Consortium
22065	COM	1250	Z11	Interpersonal Comm: SS3	3	19-Aug-24	8-Dec-24	TONL	STAFF	CO Online @ Consortium
22187	COM	1250	Z21	Interpersonal Comm: SS3	3	23-Sep-24	8-Dec-24	TONL	STAFF	CO Online @ Consortium
22309	COM	1250	Z41	Interpersonal Comm: SS3	3	19-Aug-24	6-Oct-24	TONL	STAFF	CO Online @ Consortium
22818	COM	1250	Z51	Interpersonal Comm: SS3	3	14-Oct-24	8-Dec-24	TONL	STAFF	CO Online @ Consortium
22066	CRJ	1010	Z11	Intro to Criminal Justice: SS3	3	19-Aug-24	8-Dec-24	TONL	STAFF	CO Online @ Consortium
22259	CRJ	1010	Z21	Intro to Criminal Justice: SS3	3	23-Sep-24	8-Dec-24	TONL	STAFF	CO Online @ Consortium
22067	CRJ	1025	C11	Policing Systems	3	3-Sep-24	14-Dec-24	TCCONL	STAFF	TSC CCCOnline
22390	CRJ	1025	C51	Policing Systems	3	4-Nov-24	14-Dec-24	TCCONL	STAFF	TSC CCCOnline
22068	CRJ	1035	C11	Judicial Function	3	3-Sep-24	14-Dec-24	TCCONL	STAFF	TSC CCCOnline
22069	CRJ	1045	C11	Correctional Process	3	3-Sep-24	14-Dec-24	TCCONL	STAFF	TSC CCCOnline
22260	CRJ	1045	C21	Correctional Process	3	7-Oct-24	14-Dec-24	TCCONL	STAFF	TSC CCCOnline
22070	CRJ	2005	C11	Principles of Criminal Law	3	3-Sep-24	14-Dec-24	TCCONL	STAFF	TSC CCCOnline
22436	CRJ	2010	C11	Constitutional Law	3	3-Sep-24	14-Dec-24	TCCONL	STAFF	TSC CCCOnline
22516	CRJ	2020	C11	Human Rel/Social Conflict	3	3-Sep-24	14-Dec-24	TCCONL	STAFF	TSC CCCOnline
22071	CRJ	2030	C11	Criminology	3	3-Sep-24	14-Dec-24	TCCONL	STAFF	TSC CCCOnline
22517	CRJ	2036	C11	CRJ Research Methods	3	3-Sep-24	14-Dec-24	TCCONL	STAFF	TSC CCCOnline
22072	CRJ	2057	C11	Victimology	3	3-Sep-24	14-Dec-24	TCCONL	STAFF	TSC CCCOnline
22339	CSC	1019	Z11	Intro. to Programming (lang)	3	19-Aug-24	8-Dec-24	TONL	STAFF	CO Online @ Consortium
22076	ECE	1011	Z11	Intro to Early Childhood Educ	3	19-Aug-24	8-Dec-24	TONL	STAFF	CO Online @ Consortium
22189	ECE	1011	Z21	Intro to Early Childhood Educ	3	23-Sep-24	8-Dec-24	TONL	STAFF	CO Online @ Consortium
22721	ECE	1031	Z11	Guidance Strategies Yng Child	3	19-Aug-24	8-Dec-24	TONL	STAFF	CO Online @ Consortium
22191	ECE	1031	Z21	Guidance Strategies Yng Child	3	23-Sep-24	8-Dec-24	TONL	STAFF	CO Online @ Consortium
22077	ECE	1045	Z11	Intro to ECE Techniques	3	19-Aug-24	8-Dec-24	TONL	STAFF	CO Online @ Consortium
22391	ECE	1045	Z21	Intro to ECE Techniques	3	23-Sep-24	8-Dec-24	TONL	STAFF	CO Online @ Consortium
22078	ECE	1111	Z11	Infant/Toddler Theory/Practice	3	19-Aug-24	8-Dec-24	TONL	STAFF	CO Online @ Consortium
22392	ECE	1111	Z21	Infant/Toddler Theory/Practice	3	23-Sep-24	8-Dec-24	TONL	STAFF	CO Online @ Consortium
22079	ECE	2051	Z11	ECE Nutrition/Health/Safety	3	19-Aug-24	8-Dec-24	TONL	STAFF	CO Online @ Consortium
22192	ECE	2051	Z21	ECE Nutrition/Health/Safety	3	23-Sep-24	8-Dec-24	TONL	STAFF	CO Online @ Consortium
22519	ECE	2101	Z21	Working w/Families & Communs	3	23-Sep-24	8-Dec-24	TONL	STAFF	CO Online @ Consortium
22081	ECE	2381	Z11	ECE Child Growth & Development	3	19-Aug-24	8-Dec-24	TONL	STAFF	CO Online @ Consortium
22082	ECE	2401	Z11	Admin of ECE Programs	3	19-Aug-24	8-Dec-24	TONL	STAFF	CO Online @ Consortium
22083	ECE	2411	Z11	Admin:Human Relations ECE	3	19-Aug-24	8-Dec-24	TONL	STAFF	CO Online @ Consortium
22084	ECE	2601	Z11	The Exceptional Child	3	19-Aug-24	8-Dec-24	TONL	STAFF	CO Online @ Consortium
22195	ECE	2601	Z21	The Exceptional Child	3	23-Sep-24	8-Dec-24	TONL	STAFF	CO Online @ Consortium
22080	ECE	2621	Z11	Curriculum Methods/Techniques	3	19-Aug-24	8-Dec-24	TONL	STAFF	CO Online @ Consortium
22193	ECE	2621	Z21	Curriculum Methods/Techniques	3	23-Sep-24	8-Dec-24	TONL	STAFF	CO Online @ Consortium
22194	ECE	2641	Z21	Creativity and the Young Child	3	23-Sep-24	8-Dec-24	TONL	STAFF	CO Online @ Consortium
22085	ECO	2001	Z11	Prin of Macroeconomics: SS1	3	19-Aug-24	8-Dec-24	TONL	STAFF	CO Online @ Consortium
22196	ECO	2001	Z21	Prin of Macroeconomics: SS1	3	23-Sep-24	8-Dec-24	TONL	STAFF	CO Online @ Consortium



# CCCONLINE FALL 2024 CLASS LIST (continued)

#CRN	SUB	Course	Sect.	Course Description	Hrs	Start	End	TONL	Instructor	Campus
22190	EDU	2211	Z21	Introduction to Education	3	23-Sep-24	8-Dec-24	TONL	STAFF	CO Online @ Consortium
22261	EDU	2221	Z51	Effective Teaching	1	14-Oct-24	8-Dec-24	TONL	STAFF	CO Online @ Consortium
22722	ENG	94	Z21	Studio 1021	3	23-Sep-24	8-Dec-24	TONL	STAFF	CO Online @ Consortium
22087	ENG	1021	Z11	English Composition I:CO1	3	19-Aug-24	8-Dec-24	TONL	STAFF	CO Online @ Consortium
22198	ENG	1021	Z21	English Composition I:CO1	3	23-Sep-24	8-Dec-24	TONL	STAFF	CO Online @ Consortium
22310	ENG	1021	Z41	English Composition I:CO1	3	19-Aug-24	6-Oct-24	TONL	STAFF	CO Online @ Consortium
22321	ENG	1021	Z51	English Composition I:CO1	3	14-Oct-24	8-Dec-24	TONL	STAFF	CO Online @ Consortium
22088	ENG	1022	C11	English Composition II:CO2	3	3-Sep-24	14-Dec-24	TCCONL	STAFF	TSC CCCOnline
22199	ENG	1022	C21	English Composition II:CO2	3	7-Oct-24	14-Dec-24	TCCONL	STAFF	TSC CCCOnline
22311	ENG	1022	C41	English Composition II:CO2	3	16-Sep-24	26-Oct-24	TCCONL	STAFF	TSC CCCOnline
22322	ENG	1022	C51	English Composition II:CO2	3	4-Nov-24	14-Dec-24	TCCONL	STAFF	TSC CCCOnline
22618	ENG	1031	C11	Technical Writing I: CO1	3	3-Sep-24	14-Dec-24	TCCONL	STAFF	TSC CCCOnline
22619	ENG	1031	C21	Technical Writing I: CO1	3	7-Oct-24	14-Dec-24	TCCONL	STAFF	TSC CCCOnline
22089	ENG	2021	C11	Creative Writing I: AH1	3	3-Sep-24	14-Dec-24	TCCONL	STAFF	TSC CCCOnline
22222	ENG	2021	C21	Creative Writing I: AH1	3	7-Oct-24	14-Dec-24	TCCONL	STAFF	TSC CCCOnline
22520	ENG	2022	C11	Creative Writing II	3	3-Sep-24	14-Dec-24	TCCONL	STAFF	TSC CCCOnline
22090	ENV	1111	Z11	Environmental Sci w/Lab: SC1	4	19-Aug-24	8-Dec-24	TONL	STAFF	CO Online @ Consortium
22394	ENV	1111	Z21	Environmental Sci w/Lab: SC1	4	23-Sep-24	8-Dec-24	TONL	STAFF	CO Online @ Consortium
22093	FRE	2011	C11	French Language III: AH4	3	3-Sep-24	14-Dec-24	TCCONL	STAFF	TSC CCCOnline
22094	FRE	2012	C11	French Language IV: AH4	3	3-Sep-24	14-Dec-24	TCCONL	STAFF	TSC CCCOnline
22091	FRE	1011	Z11	French Language I	5	19-Aug-24	8-Dec-24	TONL	STAFF	CO Online @ Consortium
22200	FRE	1011	Z21	French Language I	5	23-Sep-24	8-Dec-24	TONL	STAFF	CO Online @ Consortium
22092	FRE	1012	Z11	French Language II	5	19-Aug-24	8-Dec-24	TONL	STAFF	CO Online @ Consortium
22097	GER	1011	Z11	German Language I	5	19-Aug-24	8-Dec-24	TONL	STAFF	CO Online @ Consortium
22099	HIS	1310	Z11	Western Civ:Antiquity-1650 HI1	3	19-Aug-24	8-Dec-24	TONL	STAFF	CO Online @ Consortium
22203	HIS	1310	Z21	Western Civ:Antiquity-1650 HI1	3	23-Sep-24	8-Dec-24	TONL	STAFF	CO Online @ Consortium
22101	HIS	1110	C11	The World: Antiquity-1500: HI1	3	3-Sep-24	14-Dec-24	TCCONL	STAFF	TSC CCCOnline
22205	HIS	1110	C21	The World: Antiquity-1500: HI1	3	7-Oct-24	14-Dec-24	TCCONL	STAFF	TSC CCCOnline
22102	HIS	1120	C11	The World: 1500-Present: HI1	3	3-Sep-24	14-Dec-24	TCCONL	STAFF	TSC CCCOnline
22206	HIS	1120	C21	The World: 1500-Present: HI1	3	7-Oct-24	14-Dec-24	TCCONL	STAFF	TSC CCCOnline
22282	HIS	1210	C11	US History to Reconst: HI1	3	3-Sep-24	14-Dec-24	STAFF	STAFF	TSC CCCOnline
22283	HIS	1210	C21	US History to Reconst: HI1	3	7-Oct-24	14-Dec-24	STAFF	STAFF	TSC CCCOnline
22312	HIS	1210	C41	US History to Reconst: HI1	3	16-Sep-24	26-Oct-24	TCCONL	STAFF	TSC CCCOnline
22323	HIS	1210	C51	US History to Reconst: HI1	3	4-Nov-24	14-Dec-24	TCCONL	STAFF	TSC CCCOnline
22284	HIS	1220	C11	US History since Civil War:HI1	3	3-Sep-24	14-Dec-24	STAFF	STAFF	TSC CCCOnline
22285	HIS	1220	C51	US History since Civil War:HI1	3	4-Nov-24	14-Dec-24	TCCONL	STAFF	TSC CCCOnline
22100	HIS	1320	C11	Western Civ: 1650-Present: HI1	3	3-Sep-24	14-Dec-24	TCCONL	STAFF	TSC CCCOnline
22204	HIS	1320	C21	Western Civ: 1650-Present: HI1	3	7-Oct-24	14-Dec-24	TCCONL	STAFF	TSC CCCOnline
22103	HIS	2135	C11	Colorado History: HI1	3	3-Sep-24	14-Dec-24	TCCONL	STAFF	TSC CCCOnline
22228	HIS	2135	C21	Colorado History: HI1	3	7-Oct-24	14-Dec-24	TCCONL	STAFF	TSC CCCOnline
22313	HIS	2135	C41	Colorado History: HI1	3	16-Sep-24	26-Oct-24	TCCONL	STAFF	TSC CCCOnline
22324	HIS	2135	C51	Colorado History: HI1	3	4-Nov-24	14-Dec-24	TCCONL	STAFF	TSC CCCOnline
22104	HUM	1015	Z11	World Mythology: AH2	3	19-Aug-24	8-Dec-24	TONL	STAFF	CO Online @ Consortium
22273	HUM	1015	Z21	World Mythology: AH2	3	23-Sep-24	8-Dec-24	TONL	STAFF	CO Online @ Consortium
22366	HUM	1015	Z41	World Mythology: AH2	3	19-Aug-24	6-Oct-24	TONL	STAFF	CO Online @ Consortium
22231	LIT	1015	Z21	Intro to Literature I: AH2	3	23-Sep-24	8-Dec-24	TONL	STAFF	CO Online @ Consortium
22367	LIT	1015	Z41	Intro to Literature I: AH2	3	19-Aug-24	6-Oct-24	TONL	STAFF	CO Online @ Consortium
22368	LIT	1015	Z51	Intro to Literature I: AH2	3	14-Oct-24	8-Dec-24	TONL	STAFF	CO Online @ Consortium
22207	MAN	2000	Z21	Human Resource Management I	3	23-Sep-24	8-Dec-24	TONL	STAFF	CO Online @ Consortium
22208	MAN	2016	Z21	Small Business Management	3	23-Sep-24	8-Dec-24	TONL	STAFF	CO Online @ Consortium
22209	MAN	2026	Z21	Principles of Management	3	23-Sep-24	8-Dec-24	TONL	STAFF	CO Online @ Consortium
22114	MAN	2026	Z41	Principles of Management	3	19-Aug-24	6-Oct-24	TONL	STAFF	CO Online @ Consortium
22723	MAN	2026	Z51	Principles of Management	3	14-Oct-24	8-Dec-24	TONL	STAFF	CO Online @ Consortium

# CCCONLINE FALL 2024 CLASS LIST (continued)

#CRN	SUB	Course	Sect.	Course Description	Hrs	Start	End	TONL	Instructor	Campus
22210	MAR	1011	Z21	Principles of Sales	3	23-Sep-24	8-Dec-24	TONL	STAFF	CO Online @ Consortium
22115	MAR	1011	Z51	Principles of Sales	3	14-Oct-24	8-Dec-24	TONL	STAFF	CO Online @ Consortium
22330	MAR	1060	Z21	Customer Service	3	23-Sep-24	8-Dec-24	TONL	STAFF	CO Online @ Consortium
22211	MAR	2016	Z21	Principles of Marketing	3	23-Sep-24	8-Dec-24	TONL	STAFF	CO Online @ Consortium
22116	MAR	2016	Z41	Principles of Marketing	3	19-Aug-24	6-Oct-24	TONL	STAFF	CO Online @ Consortium
22724	MAR	2016	Z51	Principles of Marketing	3	14-Oct-24	8-Dec-24	TONL	STAFF	CO Online @ Consortium
22297	MAT	200	C12	Algebraic Literacy Lab	1	3-Sep-24	14-Dec-24	TCCONL	STAFF	TSC CCCOnline
22293	MAT	250	C11	Quantitative Literacy	4	3-Sep-24	14-Dec-24	TCCONL	STAFF	TSC CCCOnline
22294	MAT	250	C21	Quantitative Literacy	4	7-Oct-24	14-Dec-24	TCCONL	STAFF	TSC CCCOnline
22295	MAT	300	C11	Algebraic Literacy	4	3-Sep-24	14-Dec-24	TCCONL	STAFF	TSC CCCOnline
22298	MAT	300	C12	Algebraic Literacy	4	3-Sep-24	14-Dec-24	TCCONL	STAFF	TSC CCCOnline
22296	MAT	300	C21	Algebraic Literacy	4	7-Oct-24	14-Dec-24	TCCONL	STAFF	TSC CCCOnline
22117	MAT	1120	C11	Math for Clinical Calculations	3	3-Sep-24	14-Dec-24	TCCONL	STAFF	TSC CCCOnline
22302	MAT	1120	C41	Math for Clinical Calculations	3	16-Sep-24	26-Oct-24	TCCONL	STAFF	TSC CCCOnline
22397	MAT	1120	C51	Math for Clinical Calculations	3	4-Nov-24	14-Dec-24	TCCONL	STAFF	TSC CCCOnline
22118	MAT	1140	C11	Career Math:	3	3-Sep-24	14-Dec-24	TCCONL	STAFF	TSC CCCOnline
22315	MAT	1140	C41	Career Math:	3	16-Sep-24	26-Oct-24	TCCONL	STAFF	TSC CCCOnline
22326	MAT	1140	C51	Career Math:	3	4-Nov-24	14-Dec-24	TCCONL	STAFF	TSC CCCOnline
22119	MAT	1160	C11	Financial Mathematics	3	3-Sep-24	14-Dec-24	TCCONL	STAFF	TSC CCCOnline
22126	MAT	1220	C11	Integrated Math I: MA1	3	3-Sep-24	14-Dec-24	TCCONL	STAFF	TSC CCCOnline
22400	MAT	1220	C21	Integrated Math I: MA1	3	7-Oct-24	14-Dec-24	TCCONL	STAFF	TSC CCCOnline
22127	MAT	1230	C11	Integrated Math II: MA1	3	3-Sep-24	14-Dec-24	TCCONL	STAFF	TSC CCCOnline
22401	MAT	1230	C21	Integrated Math II: MA1	3	7-Oct-24	14-Dec-24	TCCONL	STAFF	TSC CCCOnline
22120	MAT	1240	C11	Math for Liberal Arts: MA1	4	3-Sep-24	14-Dec-24	TCCONL	STAFF	TSC CCCOnline
22398	MAT	1240	C21	Math for Liberal Arts: MA1	4	7-Oct-24	14-Dec-24	TCCONL	STAFF	TSC CCCOnline
22125	MAT	1260	C11	Intro to Statistics: MA1	3	3-Sep-24	14-Dec-24	TCCONL	STAFF	TSC CCCOnline
22213	MAT	1260	C21	Intro to Statistics: MA1	3	7-Oct-24	14-Dec-24	TCCONL	STAFF	TSC CCCOnline
22123	MAT	1320	C11	Finite Mathematics: MA1	4	3-Sep-24	14-Dec-24	TCCONL	STAFF	TSC CCCOnline
22121	MAT	1340	C11	College Algebra: MA1	4	3-Sep-24	14-Dec-24	TCCONL	STAFF	TSC CCCOnline
22212	MAT	1340	C21	College Algebra: MA1	4	7-Oct-24	14-Dec-24	TCCONL	STAFF	TSC CCCOnline
22124	MAT	1400	C11	Survey of Calculus: MA1	4	3-Sep-24	14-Dec-24	TCCONL	STAFF	TSC CCCOnline
22122	MAT	1420	C11	College Trigonometry: MA1	3	3-Sep-24	14-Dec-24	TCCONL	STAFF	TSC CCCOnline
22399	MAT	1420	C21	College Trigonometry: MA1	3	7-Oct-24	14-Dec-24	TCCONL	STAFF	TSC CCCOnline
22128	MAT	1440	C11	Pre-Calculus: MA1	5	3-Sep-24	14-Dec-24	TCCONL	STAFF	TSC CCCOnline
22402	MAT	1440	C21	Pre-Calculus: MA1	5	7-Oct-24	14-Dec-24	TCCONL	STAFF	TSC CCCOnline
22129	MAT	2410	C11	Calculus I: MA1	5	3-Sep-24	14-Dec-24	TCCONL	STAFF	TSC CCCOnline
22303	MAT	2410	C21	Calculus I: MA1	5	7-Oct-24	14-Dec-24	TCCONL	STAFF	TSC CCCOnline
22130	MAT	2420	C11	Calculus II : MA1	5	3-Sep-24	14-Dec-24	TCCONL	STAFF	TSC CCCOnline
22403	MAT	2420	C21	Calculus II : MA1	5	7-Oct-24	14-Dec-24	TCCONL	STAFF	TSC CCCOnline
22131	MAT	2430	C11	Calculus III: MA1	4	3-Sep-24	14-Dec-24	TCCONL	STAFF	TSC CCCOnline
22132	MAT	2560	C11	Differential Equations: MA1	3	3-Sep-24	14-Dec-24	TCCONL	STAFF	TSC CCCOnline
22133	MGD	1011	Z11	Adobe Photoshop I	3	19-Aug-24	8-Dec-24	TONL	STAFF	CO Online @ Consortium
22233	MGD	1011	Z21	Adobe Photoshop I	3	23-Sep-24	8-Dec-24	TONL	STAFF	CO Online @ Consortium
22137	MUS	1020	Z11	Music Appreciation: AH1	3	19-Aug-24	8-Dec-24	TONL	STAFF	CO Online @ Consortium
22139	PHI	1011	Z11	Intro to Philosophy: AH3	3	19-Aug-24	8-Dec-24	TONL	STAFF	CO Online @ Consortium
22236	PHI	1011	Z21	Intro to Philosophy: AH3	3	23-Sep-24	8-Dec-24	TONL	STAFF	CO Online @ Consortium
22140	PHI	1012	Z11	Ethics:AH3	3	19-Aug-24	8-Dec-24	TONL	STAFF	CO Online @ Consortium
22237	PHI	1012	Z21	Ethics:AH3	3	23-Sep-24	8-Dec-24	TONL	STAFF	CO Online @ Consortium
22725	PHI	1012	Z51	Ethics:AH3	3	14-Oct-24	8-Dec-24	TONL	STAFF	CO Online @ Consortium
22141	PHI	1013	Z11	Logic: AH3	3	19-Aug-24	8-Dec-24	TONL	STAFF	CO Online @ Consortium
22238	PHI	1013	Z21	Logic: AH3	3	23-Sep-24	8-Dec-24	TONL	STAFF	CO Online @ Consortium
22341	PHI	1014	Z11	Comparative Religions: AH3	3	19-Aug-24	8-Dec-24	TONL	STAFF	CO Online @ Consortium
22342	PHI	1014	Z21	Comparative Religions: AH3	3	23-Sep-24	8-Dec-24	TONL	STAFF	CO Online @ Consortium
22144	PHI	2005	Z11	Business Ethics: AH3	3	19-Aug-24	8-Dec-24	TONL	STAFF	CO Online @ Consortium
22406	PHI	2005	Z21	Business Ethics: AH3	3	23-Sep-24	8-Dec-24	TONL	STAFF	CO Online @ Consortium
22145	PHI	2014	Z11	Philosophy of Religion: AH3	3	19-Aug-24	8-Dec-24	TONL	STAFF	CO Online @ Consortium
22372	PHI	2018	Z11	Environmental Ethics: GT-AH3	3	19-Aug-24	8-Dec-24	TONL	STAFF	CO Online @ Consortium
22373	PHI	2018	Z41	Environmental Ethics: GT-AH3	3	19-Aug-24	6-Oct-24	TONL	STAFF	CO Online @ Consortium

# CCCONLINE FALL 2024 CLASS LIST (continued)

#CRN	SUB	Course	Sect.	Course Description	Hrs	Start	End		Instructor	Campus
22139	PHI	1011	Z11	Intro to Philosophy: AH3	3	19-Aug-24	8-Dec-24	TONL	STAFF	CO Online @ Consortium
22236	PHI	1011	Z21	Intro to Philosophy: AH3	3	23-Sep-24	8-Dec-24	TONL	STAFF	CO Online @ Consortium
22140	PHI	1012	Z11	Ethics:AH3	3	19-Aug-24	8-Dec-24	TONL	STAFF	CO Online @ Consortium
22237	PHI	1012	Z21	Ethics:AH3	3	23-Sep-24	8-Dec-24	TONL	STAFF	CO Online @ Consortium
22725	PHI	1012	Z51	Ethics:AH3	3	14-Oct-24	8-Dec-24	TONL	STAFF	CO Online @ Consortium
22141	PHI	1013	Z11	Logic: AH3	3	19-Aug-24	8-Dec-24	TONL	STAFF	CO Online @ Consortium
22238	PHI	1013	Z21	Logic: AH3	3	23-Sep-24	8-Dec-24	TONL	STAFF	CO Online @ Consortium
22341	PHI	1014	Z11	Comparative Religions: AH3	3	19-Aug-24	8-Dec-24	TONL	STAFF	CO Online @ Consortium
22342	PHI	1014	Z21	Comparative Religions: AH3	3	23-Sep-24	8-Dec-24	TONL	STAFF	CO Online @ Consortium
22144	PHI	2005	Z11	Business Ethics: AH3	3	19-Aug-24	8-Dec-24	TONL	STAFF	CO Online @ Consortium
22406	PHI	2005	Z21	Business Ethics: AH3	3	23-Sep-24	8-Dec-24	TONL	STAFF	CO Online @ Consortium
22145	PHI	2014	Z11	Philosophy of Religion: AH3	3	19-Aug-24	8-Dec-24	TONL	STAFF	CO Online @ Consortium
22372	PHI	2018	Z11	Environmental Ethics: GT-AH3	3	19-Aug-24	8-Dec-24	TONL	STAFF	CO Online @ Consortium
22373	PHI	2018	Z41	Environmental Ethics: GT-AH3	3	19-Aug-24	6-Oct-24	TONL	STAFF	CO Online @ Consortium
22715	PSC	1011	Z11	American Government: SS1	3	19-Aug-24	8-Dec-24	TONL	STAFF	CO Online @ Consortium
22716	PSC	1011	Z21	American Government: SS1	3	23-Sep-24	8-Dec-24	TONL	STAFF	CO Online @ Consortium
22717	PSC	1011	Z41	American Government: SS1	3	19-Aug-24	6-Oct-24	TONL	STAFF	CO Online @ Consortium
22151	PSY	1001	Z11	General Psychology I: SS3	3	19-Aug-24	8-Dec-24	TONL	STAFF	CO Online @ Consortium
22821	PSY	1001	Z21	General Psychology I: SS3	3	23-Sep-24	8-Dec-24	TONL	STAFF	CO Online @ Consortium
22316	PSY	1001	Z41	General Psychology I: SS3	3	19-Aug-24	6-Oct-24	TONL	STAFF	CO Online @ Consortium
22327	PSY	1001	Z51	General Psychology I: SS3	3	14-Oct-24	8-Dec-24	TONL	STAFF	CO Online @ Consortium
22157	RUS	1011	Z11	Russian Language I	5	19-Aug-24	8-Dec-24	TONL	STAFF	CO Online @ Consortium
22158	SCI	1055	Z11	Integrated Sci I w/Lab: SC1	4	19-Aug-24	8-Dec-24	TONL	STAFF	CO Online @ Consortium
22411	SCI	1055	Z21	Integrated Sci I w/Lab: SC1	4	23-Sep-24	8-Dec-24	TONL	STAFF	CO Online @ Consortium
22220	SCI	1056	Z11	Integrated Sci II w/Lab: SC1	4	19-Aug-24	8-Dec-24	TONL	STAFF	CO Online @ Consortium
22437	SCI	1056	Z21	Integrated Sci II w/Lab: SC1	4	23-Sep-24	8-Dec-24	TONL	STAFF	CO Online @ Consortium
22444	SCI	1105	Z11	Science in Society: SC2	3	19-Aug-24	8-Dec-24	TONL	STAFF	CO Online @ Consortium
22159	SOC	1001	Z11	Intro to Sociology I : SS3	3	19-Aug-24	8-Dec-24	TONL	STAFF	CO Online @ Consortium
22221	SOC	1001	Z21	Intro to Sociology I : SS3	3	23-Sep-24	8-Dec-24	TONL	STAFF	CO Online @ Consortium
22162	SPA	1011	Z11	Spanish Language I	5	19-Aug-24	8-Dec-24	TONL	STAFF	CO Online @ Consortium
22224	SPA	1011	Z21	Spanish Language I	5	23-Sep-24	8-Dec-24	TONL	STAFF	CO Online @ Consortium
22163	SPA	1012	Z11	Spanish Language II	5	19-Aug-24	8-Dec-24	TONL	STAFF	CO Online @ Consortium
22225	SPA	1012	Z21	Spanish Language II	5	23-Sep-24	8-Dec-24	TONL	STAFF	CO Online @ Consortium
22164	SPA	2011	Z11	Spanish Language III: AH4	3	19-Aug-24	8-Dec-24	TONL	STAFF	CO Online @ Consortium
22226	SPA	2011	Z21	Spanish Language III: AH4	3	23-Sep-24	8-Dec-24	TONL	STAFF	CO Online @ Consortium
22165	SPA	2012	C11	Spanish Language IV: AH4	3	3-Sep-24	14-Dec-24	TCCONL	STAFF	TSC CCCOnline
22498	THE	1005	Z11	Theatre Appreciation: AH1	3	19-Aug-24	8-Dec-24	TONL	Reorda	CO Online @ Consortium
22563	THE	1005	Z21	Theatre Appreciation: AH1	3	23-Sep-24	8-Dec-24	TONL	STAFF	CO Online @ Consortium
22684	BIO	2101	X40	Human Anatomy&Phys I w/Lab:SC1	4	23-Sep-24	8-Dec-24	TONL	Walker	CO Online @ TSC
22823	BUS	1015	X43	Introduction to Business	3	23-Sep-24	8-Dec-24	TTCX	Hammer	CO Online @ TSC
22682	COM	1150	X01	Public Speaking	3	19-Aug-24	8-Dec-24	TONL	Hamilton	CO Online @ TSC
22822	COM	1150	X44	Public Speaking	3	23-Sep-24	8-Dec-24	TONL	Hamilton	CO Online @ TSC
22683	COM	1250	X00	Interpersonal Comm: SS3	3	19-Aug-24	8-Dec-24	TONL	Hamilton	CO Online @ TSC
22805	COM	1250	X04	Interpersonal Comm: SS3	3	19-Aug-24	8-Dec-24	TONL	Hamilton	CO Online @ TSC
22476	ENG	1021	X00	English Composition I:CO1	3	19-Aug-24	8-Dec-24	TONL	Feinman-Stodghill	CO Online @ TSC
22813	HPR	1039	X45	Medical Terminology	2	23-Sep-24	8-Dec-24	TONL	Malouff	CO Online @ TSC
22687	HUM	1015	X00	World Mythology: AH2	3	19-Aug-24	8-Dec-24	TONL	Smith	CO Online @ TSC
22700	MAN	2026	X40	Principles of Management	3	23-Sep-24	8-Dec-24	TONL	Velasquez	CO Online @ TSC



# CCCONLINE FALL 2024 CLASS LIST (continued)

#CRN	SUB	Course	Sect.	Course Description	Hrs	Start	End		Instructor	Campus
22824	PSC	1011	X40	American Government: SS1	3	23-Sep-24	8-Dec-24		Lanier	CO Online @ TSC
22814	PSC	1011	X41	American Government: SS1	3	23-Sep-24	8-Dec-24	TONL	Lanier	CO Online @ TSC
22560	PSY	1001	X00	General Psychology I: SS3	3	19-Aug-24	8-Dec-24	TONL	Tabeling-Garcia	CO Online @ TSC
22699	THE	1005	X00	Theatre Appreciation: AH1	3	19-Aug-24	8-Dec-24	TONL	Reorda	CO Online @ TSC
22052	CHE	1011	C11	Intro to Chemistry I/Lab: SC1	5	3-Sep-24	14-Dec-24	TCCONL	STAFF	TSC CCCOnline
22182	CHE	1011	C21	Intro to Chemistry I/Lab: SC1	5	7-Oct-24	14-Dec-24	TCCONL	STAFF	TSC CCCOnline
22053	CHE	1012	C11	Intro to Chemistry II/Lab: SC1	5	3-Sep-24	14-Dec-24	TCCONL	STAFF	TSC CCCOnline
22054	CHE	1111	C11	Gen College Chem I/Lab: SC1	5	3-Sep-24	14-Dec-24	TCCONL	STAFF	TSC CCCOnline
22183	CHE	1111	C21	Gen College Chem I/Lab: SC1	5	7-Oct-24	14-Dec-24	TCCONL	STAFF	TSC CCCOnline
22246	CNG	1001	C11	Networking Fundamentals	3	3-Sep-24	14-Dec-24	TCCONL	STAFF	TSC CCCOnline
22304	CNG	1001	C21	Networking Fundamentals	3	7-Oct-24	14-Dec-24	TCCONL	STAFF	TSC CCCOnline
22063	CNG	2011	C21	Windows Configuration: (OS)	3	7-Oct-24	14-Dec-24	TCCONL	STAFF	TSC CCCOnline
22073	CSC	1005	C11	Computer Literacy	3	3-Sep-24	14-Dec-24	TCCONL	STAFF	TSC CCCOnline
22074	CSC	1060	C11	Computer Science I: (C++)	4	3-Sep-24	14-Dec-24	TCCONL	STAFF	TSC CCCOnline
22075	CSC	1061	C11	Computer Sci II: (Language)	4	3-Sep-24	14-Dec-24	TCCONL	STAFF	TSC CCCOnline
22518	CSC	2030	C11	C Programming: Platform	3	3-Sep-24	14-Dec-24	TCCONL	STAFF	TSC CCCOnline
22188	CSC	2040	C21	Java Programming	3	7-Oct-24	14-Dec-24	TCCONL	STAFF	TSC CCCOnline
22086	ECO	2002	C11	Prin of Microeconomics: SS1	3	3-Sep-24	14-Dec-24	TCCONL	STAFF	TSC CCCOnline
22197	ECO	2002	C21	Prin of Microeconomics: SS1	3	7-Oct-24	14-Dec-24	TCCONL	STAFF	TSC CCCOnline
22393	ECO	2002	C51	Prin of Microeconomics: SS1	3	4-Nov-24	14-Dec-24	TCCONL	STAFF	TSC CCCOnline
22095	GEO	1005	C11	World Regional Geography: SS2	3	3-Sep-24	14-Dec-24	TCCONL	STAFF	TSC CCCOnline
22201	GEO	1005	C21	World Regional Geography: SS2	3	7-Oct-24	14-Dec-24	TCCONL	STAFF	TSC CCCOnline
22395	GEO	1005	C41	World Regional Geography: SS2	3	16-Sep-24	26-Oct-24	TCCONL	STAFF	TSC CCCOnline
22096	GEO	1006	C11	Human Geography: SS2	3	3-Sep-24	14-Dec-24	TCCONL	STAFF	TSC CCCOnline
22202	GEO	1006	C21	Human Geography: SS2	3	7-Oct-24	14-Dec-24	TCCONL	STAFF	TSC CCCOnline
22098	GEY	1111	C11	Physical Geology w/Lab: SC1	4	3-Sep-24	14-Dec-24	TCCONL	STAFF	TSC CCCOnline
22227	GEY	1111	C21	Physical Geology w/Lab: SC1	4	7-Oct-24	14-Dec-24	TCCONL	STAFF	TSC CCCOnline
22257	GEY	1112	C11	Historical Geology w/Lab: SC1	4	3-Sep-24	14-Dec-24	TCCONL	STAFF	TSC CCCOnline
22105	HUM	1021	C11	Humanities: Early Civ: AH2	3	3-Sep-24	14-Dec-24	TCCONL	STAFF	TSC CCCOnline
22229	HUM	1021	C21	Humanities: Early Civ: AH2	3	7-Oct-24	14-Dec-24	TCCONL	STAFF	TSC CCCOnline
22106	HUM	1022	C11	Humanities: Mediev-Mod: AH2	3	3-Sep-24	14-Dec-24	TCCONL	STAFF	TSC CCCOnline
22492	HUM	1022	C21	Humanities: Mediev-Mod: AH2	3	7-Oct-24	14-Dec-24	TCCONL	STAFF	TSC CCCOnline
22107	HUM	1023	C11	Humanities: Modern Wrld: AH2	3	3-Sep-24	14-Dec-24	TCCONL	STAFF	TSC CCCOnline
22230	HUM	1023	C21	Humanities: Modern Wrld: AH2	3	7-Oct-24	14-Dec-24	TCCONL	STAFF	TSC CCCOnline
22108	HWE	1050	C11	Human Nutrition	3	3-Sep-24	14-Dec-24	TCCONL	STAFF	TSC CCCOnline
22314	HWE	1050	C41	Human Nutrition	3	16-Sep-24	26-Oct-24	TCCONL	STAFF	TSC CCCOnline
22325	HWE	1050	C51	Human Nutrition	3	4-Nov-24	14-Dec-24	TCCONL	STAFF	TSC CCCOnline
22109	LIT	2001	C11	World Lit to 1600: AH2	3	3-Sep-24	14-Dec-24	TCCONL	STAFF	TSC CCCOnline
22110	LIT	2002	C11	World Lit After 1600: AH2	3	3-Sep-24	14-Dec-24	TCCONL	STAFF	TSC CCCOnline
22111	LIT	2011	C11	Amer Lit to Civil War: AH2	3	3-Sep-24	14-Dec-24	TCCONL	STAFF	TSC CCCOnline
22112	LIT	2012	C11	Amer Lit Aft Civil War: AH2	3	3-Sep-24	14-Dec-24	TCCONL	STAFF	TSC CCCOnline
22113	LIT	2055	C11	Children's Literature: AH2	3	3-Sep-24	14-Dec-24	TCCONL	STAFF	TSC CCCOnline
22232	LIT	2055	C21	Children's Literature: AH2	3	7-Oct-24	14-Dec-24	TCCONL	STAFF	TSC CCCOnline
22396	LIT	2055	C41	Children's Literature: AH2	3	16-Sep-24	26-Oct-24	TCCONL	STAFF	TSC CCCOnline
22234	MGD	1002	C21	Introduction To Multimedia	3	7-Oct-24	14-Dec-24	TCCONL	STAFF	TSC CCCOnline
22258	MGD	1012	C11	Adobe Illustrator I	3	3-Sep-24	14-Dec-24	TCCONL	STAFF	TSC CCCOnline
22235	MGD	1012	C21	Adobe Illustrator I	3	7-Oct-24	14-Dec-24	TCCONL	STAFF	TSC CCCOnline
22134	MGD	1013	C11	Adobe InDesign	3	3-Sep-24	14-Dec-24	TCCONL	STAFF	TSC CCCOnline
22369	MGD	1033	C11	Graphic Design I	3	3-Sep-24	14-Dec-24	TCCONL	STAFF	TSC CCCOnline
22135	MGD	1041	C11	Web Design I	3	3-Sep-24	14-Dec-24	TCCONL	STAFF	TSC CCCOnline
22404	MGD	1043	C11	Motion Graphic Design I:Softwr	3	3-Sep-24	14-Dec-24	TCCONL	STAFF	TSC CCCOnline

# CCCONLINE FALL 2024 CLASS LIST (continued)

#CRN	SUB	Course	Sect.	Course Description	Hrs	Start	End		Instructor	Campus
22136	MUS	1000	C11	Music Theory Fundamentals I	3	3-Sep-24	14-Dec-24	TCCONL	STAFF	TSC CCCOnline
22521	MUS	1021	C11	Music Hist Mdlvl-Classical: AH1	3	3-Sep-24	14-Dec-24	TCCONL	STAFF	TSC CCCOnline
22383	MUS	1022	C11	Music Hist Romantic-Prsnt: AH1	3	3-Sep-24	14-Dec-24	TCCONL	STAFF	TSC CCCOnline
22138	MUS	1025	C21	History of Jazz: AH1	3	7-Oct-24	14-Dec-24	TCCONL	STAFF	TSC CCCOnline
22142	PHI	1015	C11	World Religions-West: AH3	3	3-Sep-24	14-Dec-24	TCCONL	STAFF	TSC CCCOnline
22405	PHI	1015	C21	World Religions-West: AH3	3	7-Oct-24	14-Dec-24	TCCONL	STAFF	TSC CCCOnline
22143	PHI	1016	C11	World Religions-East: AH3	3	3-Sep-24	14-Dec-24	TCCONL	STAFF	TSC CCCOnline
22737	PHI	1016	C21	World Religions-East: AH3	3	7-Oct-24	14-Dec-24	TCCONL	STAFF	TSC CCCOnline
22146	PHY	1105	C11	Conceptual Physics w/Lab: SC1	4	3-Sep-24	14-Dec-24	TCCONL	STAFF	TSC CCCOnline
22214	PHY	1105	C21	Conceptual Physics w/Lab: SC1	4	7-Oct-24	14-Dec-24	TCCONL	STAFF	TSC CCCOnline
22147	PHY	1111	C11	Physics Alg-Based I/Lab: SC1	5	3-Sep-24	14-Dec-24	TCCONL	STAFF	TSC CCCOnline
22215	PHY	1111	C21	Physics Alg-Based I/Lab: SC1	5	7-Oct-24	14-Dec-24	TCCONL	STAFF	TSC CCCOnline
22148	PHY	1112	C11	Physics Alg-Based II/Lab: SC1	5	3-Sep-24	14-Dec-24	TCCONL	STAFF	TSC CCCOnline
22149	PHY	2111	C11	Physics Calc-Based I/Lab: SC1	5	3-Sep-24	14-Dec-24	TCCONL	STAFF	TSC CCCOnline
22150	PHY	2112	C11	Physics Calc-Based II/Lab: SC1	5	3-Sep-24	14-Dec-24	TCCONL	STAFF	TSC CCCOnline
22730	PSC	1025	C11	Amer State and Local Govt: SS1	3	3-Sep-24	14-Dec-24	TCCONL	STAFF	TSC CCCOnline
22731	PSC	1025	C21	Amer State and Local Govt: SS1	3	7-Oct-24	14-Dec-24	TCCONL	STAFF	TSC CCCOnline
22732	PSC	2005	C11	International Relations: SS1	3	3-Sep-24	14-Dec-24	TCCONL	STAFF	TSC CCCOnline
22733	PSC	2005	C21	International Relations: SS1	3	7-Oct-24	14-Dec-24	TCCONL	STAFF	TSC CCCOnline
22734	PSC	2020	C11	Intro to Political Science:SS1	3	3-Sep-24	14-Dec-24	TCCONL	STAFF	TSC CCCOnline
22735	PSC	2020	C21	Intro to Political Science:SS1	3	7-Oct-24	14-Dec-24	TCCONL	STAFF	TSC CCCOnline
22736	PSC	2020	C41	Intro to Political Science:SS1	3	16-Sep-24	26-Oct-24	TCCONL	STAFF	TSC CCCOnline
22152	PSY	1002	C11	General Psychology II : SS3	3	3-Sep-24	14-Dec-24	TCCONL	STAFF	TSC CCCOnline
22216	PSY	1002	C51	General Psychology II : SS3	3	4-Nov-24	14-Dec-24	TCCONL	STAFF	TSC CCCOnline
22337	PSY	2107	C11	Human Sexuality: SS3	3	3-Sep-24	14-Dec-24	TCCONL	STAFF	TSC CCCOnline
22338	PSY	2107	C21	Human Sexuality: SS3	3	7-Oct-24	14-Dec-24	TCCONL	STAFF	TSC CCCOnline
22407	PSY	2107	C41	Human Sexuality: SS3	3	16-Sep-24	26-Oct-24	TCCONL	STAFF	TSC CCCOnline
22408	PSY	2107	C51	Human Sexuality: SS3	3	4-Nov-24	14-Dec-24	TCCONL	STAFF	TSC CCCOnline
22153	PSY	2221	C11	Social Psychology: SS3	3	3-Sep-24	14-Dec-24	TCCONL	STAFF	TSC CCCOnline
22217	PSY	2221	C41	Social Psychology: SS3	3	16-Sep-24	26-Oct-24	TCCONL	STAFF	TSC CCCOnline
22409	PSY	2221	C51	Social Psychology: SS3	3	4-Nov-24	14-Dec-24	TCCONL	STAFF	TSC CCCOnline
22370	PSY	2222	C11	Psychology of Death/Dying: SS3	3	3-Sep-24	14-Dec-24	TCCONL	STAFF	TSC CCCOnline
22410	PSY	2222	C21	Psychology of Death/Dying: SS3	3	7-Oct-24	14-Dec-24	TCCONL	STAFF	TSC CCCOnline
22154	PSY	2440	C11	Human Growth & Developmnt: SS3	3	3-Sep-24	14-Dec-24	TCCONL	STAFF	TSC CCCOnline
22218	PSY	2440	C21	Human Growth & Developmnt: SS3	3	7-Oct-24	14-Dec-24	TCCONL	STAFF	TSC CCCOnline
22317	PSY	2440	C41	Human Growth & Developmnt: SS3	3	16-Sep-24	26-Oct-24	TCCONL	STAFF	TSC CCCOnline
22328	PSY	2440	C51	Human Growth & Developmnt: SS3	3	4-Nov-24	14-Dec-24	TCCONL	STAFF	TSC CCCOnline
22155	PSY	2441	C11	Child Development: SS3	3	3-Sep-24	14-Dec-24	TCCONL	STAFF	TSC CCCOnline
22219	PSY	2441	C21	Child Development: SS3	3	7-Oct-24	14-Dec-24	TCCONL	STAFF	TSC CCCOnline
22156	PSY	2552	C11	Abnormal Psychology: SS3	3	3-Sep-24	14-Dec-24	TCCONL	STAFF	TSC CCCOnline
22239	PSY	2552	C21	Abnormal Psychology: SS3	3	7-Oct-24	14-Dec-24	TCCONL	STAFF	TSC CCCOnline
22160	SOC	1002	C11	Intro to Sociology II: SS3	3	3-Sep-24	14-Dec-24	TCCONL	STAFF	TSC CCCOnline
22223	SOC	1002	C51	Intro to Sociology II: SS3	3	4-Nov-24	14-Dec-24	TCCONL	STAFF	TSC CCCOnline
22371	SOC	2005	C11	Soc Of Family Dynamics:SS3	3	3-Sep-24	14-Dec-24	TCCONL	STAFF	TSC CCCOnline
22412	SOC	2005	C21	Soc Of Family Dynamics:SS3	3	7-Oct-24	14-Dec-24	TCCONL	STAFF	TSC CCCOnline
22161	SOC	2031	C11	Sociology-Deviant Behavior:SS3	3	3-Sep-24	14-Dec-24	TCCONL	STAFF	TSC CCCOnline
22240	SOC	2031	C21	Sociology-Deviant Behavior:SS3	3	7-Oct-24	14-Dec-24	TCCONL	STAFF	TSC CCCOnline

**NOTES:**

---



---



---



---

# STATEWIDE GUARANTEED TRANSFER

CRN	Title				
AGE 102	Agriculture Economics	GT-SS1	ECO 211	Gender in the Economy	GT-SS1
AGR 260	World Interdependence: Pop & Food	GT-SS3	ECO 245	Environmental Economics	GT-SS1
AGY 240	Introductory Soil Science, with Lab	GT-SC1	ENG 121	English Composition I	GT-CO1
ANT 101	Cultural Anthropology	GT-SS3	ENG 122	English Composition II	GT-CO2
ANT 102	Cultural Anthropology Laboratory	GT-SS3	ENG 201	Eng. Comp III: Writing for Pub. Discourse	GT-CO3
ANT 103	Archaeology Laboratory	GT-SS3	ENV 101	Intro to Env. Science, with Lab	GT-SC1
ANT 104	Physical Anthropology Laboratory	GT-SS3	ENV 110	Natural Disasters	GT-SC2
ANT 107	Introduction to Archaeology	GT-SS3	ETH 200	Introduction to Ethnic Studies	GT-SS3
ANT 108	Archaeology of World Rock Art	GT-SS3	FRE 211	French Language III	GT-AH4
ANT 111	Physical Anthropology	GT-SC1	FRE 212	French Language IV	GT-AH4
ANT 201	INTRO to Forensic Anthropology	GT-SS3	GEO 105	World Regional Geography	GT-SS2
ANT 215	Indians of North America	GT-SS3	GEO 106	Human Geography	GT-SS2
ANT 250	Medical Anthropology	GT-SS3	GEO 111	POHI Geography - Landforms, with Lab	GT-SC1
ART 110	Art Appreciation	GT-AH1	GEO 112	POHI Geography-Weather & Climate/ Lab	GT-SC1
ART 111	Art History Ancient to Medieval	GT-AH1	GER 211	German Language III	GT-AH4
ART 112	Art History Renaissance to Modern	GT-AH1	GER 212	German Language IV	GT-AH4
ART 207	Art History - 1900 to Present	GT-AH1	GEY 108	Geology of U.S. National Parks	GT-SC2
AST 101	Astronomy I, with Lab	GT-SC1	GEY 111	Physical Geology, with Lab	GT-SC1
AST 102	Astronomy II, with Lab	GT-SC1	GEY 112	Historical Geology, with Lab	GT-SC1
AST 150	Astrobiology	GT-SC2	GEY 135	Environmental Geology, with Lab	GT-SC1
AST 155	Astronomy Ancient Cultures	GT-SC2	HIS 101	Western Civilization: Antiquity - 1650	GT-HI1
AST 160	Cosmology	GT-SC2	HIS 102	Western Civilization: 1650 - Present	GT-HI1
BIO 103	Principles of Animal Biology	GT-SC2	HIS 111	The World: Antiquity - 1500	GT-HI1
BIO 104	Biology: A Human Approach	GT-SC1	HIS 112	World Civilization II	GT-HI1
BIO 105	Science of Biology, with Lab	GT-SC1	HIS 121	U.S. History to Reconstruction	GT-HI1
BIO 111	General College Biology I. with Lab	GT-SC1	HIS 122	U.S. History Since the Civil War	GT-HI1
BIO 112	General College Biology II, with Lab	GT-SC1	HIS 203	Civil War Era in American History	GT-HI1
BIO 116	Introduction to Human Disease	GT-SC2	HIS 205	Women in World History	GT-HI1
BIO 201	Anatomy & Physiology I, with Lab	GT-SC1	HIS 207	American Environmental History	GT-HI1
BIO 202	Anatomy & Physiology II, with Lab	GT-SC1	HIS 208	American Indian History	GT-HI1
BIO 204	Microbiology, with Lab	GT-SC1	HIS 215	Women in U.S. History	GT-HI1
BIO 208	Gen. College Microbiology, with Lab	GT-SC1	HIS 218	History of Science and Technology	GT-HI1
BIO 220	General Zoology, with Lab	GT-SC1	HIS 225	Colorado History	GT-HI1
BIO 221	Botany, with Lab	GT-SC1	HIS 235	History of the American West	GT-HI1
BIO 224	Genetics	GT-SC1	HIS 236	U.S. History Since 1945	GT-HI1
CHE 101	Introduction to Chemistry I, with Lab	GT-SC1	HIS 243	History of Modern China	GT-HI1
CHE 102	Introduction to Chemistry II, with Lab	GT-SC1	HIS 244	History of Latin America	GT-HI1
CHE 105	Chemistry in Context, with Lab	GT-SC1	HIS 245	U.S. in the World	GT-HI1
CHE 111	General College Chemistry I, with Lab	GT-SC1	HIS 247	20th Century World History	GT-HI1
CHE 112	General College Chemistry II, with Lab	GT-SC1	HIS 249	History of Islamic Civilization	GT-HI1
COM 220	Inter-cultural Communication	GT-SS3	HIS 250	African American History	GT-HI1
CRJ 110	Introduction to Criminal Justice	GT-SS3	HIS 251	History of Christianity in the World	GT-HI1
DAN 125	History of Dance I	GT-AH1	HIS 255	The Middle Ages	GT-HI1
ECO 101	Economics of Social Issues	GT-SS1	HIS 259	Modern Middle East	GT-HI1
ECO 201	Principles of Macroeconomics	GT-SS1	HIS 260	U S Foreign Relations History	GT-HI1
ECO 202	Principles of Microeconomics	GT-SS1	HIS 265	Writing About History	GT-CO3
			HUM 103	Introduction to Film Art	GT-AH2



## STATEWIDE GUARANTEED TRANSFER (continued)

HUM 115	World Mythology	GT-AH2	PHY 105	Conceptual Physics, with Lab	GT-SC1
HUM 121	Humanities: Early Civilization	GT-AH2	PHY 107	Energy Science & Tech., with Lab	GT-SC1
HUM 122	Humanities: Medieval-Modern	GT-AH2	PHY 111	Physics: Algebra Based I, with Lab	GT-SC1
HUM 123	Humanities: Modern World	GT-AH2	PHY 112	Physics: Algebra Based II, with Lab	GT-SC1
ITA 211	Italian Language III	GT-AH4	PHY 211	Physics: Calculus Based I, with Lab	GT-SC1
ITA 212	Italian Language IV	GT-AH4	PHY 212	Physics: Calculus Based II, with Lab	GT-SC1
JOU 105	Introduction to Mass Media	GT-SS3	POS 105	Introduction to Political Science	GT-SS1
JPN 211	Japanese Language III	GT-AH4	POS 111	American Government	GT-SS1
JPN 212	Japanese Language IV	GT-AH4	POS 125	American State & Local Government	GT-SS1
LIT 115	Introduction to Literature I	GT-AH2	POS 205	International Relations	GT-SS1
LIT 201	World Literature to 1600	GT-AH2	POS 215	Current Political Issues	GT-SS1
LIT 202	World Literature After 1600	GT-AH2	POS 225	Comparative Government	GT-SS1
LIT 205	Ethnic Literature	GT-AH2	PSY 101	General Psychology I	GT-SS3
LIT 211	American Literature to Civil War	GT-AH2	PSY 102	General Psychology II	GT-SS3
LIT 212	American Literature After Civil War	GT-AH2	PSY 205	Psychology of Gender	GT-SS3
LIT 221	British Literature to 1700	GT-AH2	PSY 217	Human Sexuality	GT-SS3
LIT 222	British Literature Since 1700	GT-AH2	PSY 226	Social Psychology	GT-SS3
LIT 225	Introduction to Shakespeare	GT-AH2	PSY 227	Psychology of Death and Dying	GT-SS3
LIT 246	Literature of Women	GT-AH2	PSY 235	Human Growth & Development	GT-SS3
LIT 259	Survey of African American Literature	GT-AH2	PSY 238	Child Development	GT-SS3
LIT 268	Celtic Literature	GT-AH2	PSY 240	Health Psychology	GT-SS3
MAT 120	Mathematics for Liberal Arts	GT-MA1	PSY 249	Abnormal Psychology	GT-SS3
MAT 121	College Algebra	GT-MA1	PSY 265	Psychology of Personality	GT-SS3
MAT 122	College Trigonometry	GT-MA1	RUS 211	Russian Language III	GT-AH4
MAT 123	Finite Mathematics	GT-MA1	RUS 212	Russian Language IV	GT-AH4
MAT 125	Survey of Calculus	GT-MA1	SCI 105	Science in Society	GT-SC2
MAT 135	Introduction to Statistics	GT-MA1	SCI 155	Integrated Science I: Physics & Chemistry, with Lab	GT-SC1
MAT 166	Pre-Calculus	GT-MA1	SCI 156	Integrated Science II: Earth & Life Science, with Lab	GT-SC1
MAT 201	Calculus I	GT-MA1	SOC 101	Introduction to Sociology	GT-SS3
MAT 202	Calculus II	GT-MA1	SOC 102	Introduction to Sociology II	GT-SS3
MAT 203	Calculus III	GT-MA1	SOC 205	Sociology of Family Dynamics	GT-SS3
MAT 204	Calculus III/Engineering Apps	GT-MA1	SOC 207	Environmental Sociology	GT-SS3
MAT 215	Discrete Mathematics	GT-MA1	SOC 215	Contemporary Social Problems	GT-SS3
MAT 261	Diff Eq/with Engineering Apps	GT-MA1	SOC 216	Sociology of Gender	GT-SS3
MAT 265	Differential Equations	GT-MA1	SOC 218	Sociology of Diversity	GT-SS3
MET 150	General Meteorology, with Lab	GT-MA1	SOC 220	Sociology of Religion	GT-SS3
MUS 120	Music Appreciation	GT-AH1	SOC 231	Sociology of Deviant Behavior	GT-SS3
MUS 122	Music History: Early Romantic-Present	GT-AH1	SOC 237	Sociology of Death and Dying	GT-SS3
MUS 123	Survey of World Music	GT-AH1	SPA 211	Spanish Language III	GT-AH4
MUS 125	History of Jazz	GT-AH1	SPA 212	Spanish Language IV	GT-AH4
NRE 251	General Oceanography, with Lab	GT-SC1	THE 105	Theatre Appreciation	GT-AH1
PHI 111	Introduction to Philosophy	GT-AH3	THE 108	Theatre Script Analysis	GT-AH1
PHI 112	Ethics	GT-AH3	THE 211	Dev. of Theatre: Greek-Renaissance	GT-AH1
PHI 113	Logic	GT-AH3	THE 212	Dev. of Theatre: Restoration-Modern	GT-AH1
PHI 114	Comparative Religions	GT-AH3	THE 215	Playwriting	GT-AH1
PHI 115	World Religions West	GT-AH3	WST 200	Introduction to Women Studies	GT-SS3
PHI 116	World Religions East	GT-AH3	WST 225	Women and Social Action	GT-SS3
PHI 214	Philosophy of Religion	GT-AH3	WST 240	Goddesses & Women of the Anc. World	GT-SS3
PHI 218	Environmental Ethics	GT-AH3	WST 249	Women's Sexuality	GT-SS3
PHI 220	Philosophy of Death and Dying	GT-AH3			

# GENERAL INFORMATION

## FALL 2024

### **Semester Calendar**

Please pay special attention to the dates that classes begin and end. Note that arriving late or leaving early may impact your grades.

### **Credit Hours**

For Institutional Scholarships, students must be registered in 15 credit hours. Federal Financial Aid recognizes a student carrying 12 credit hours to be full time.

Arts and Sciences students may not take more than 18 credit hours without approval from the Dean of Instruction.

### **Course Cancellations**

The College reserves the right to cancel programs or courses, to change instructors, and to change times or locations of classes. The Vice President of Academic Affairs will have current, up-to-date information on scheduled classes.

### **Drops, Withdrawals & Repeating a Course**

It's important to know the drop and withdrawal dates for all your classes. The dates are listed on the academic calendar or your individual course syllabus. What's the difference between "drop" and "withdraw"? If you drop a class before the census date, you will not have a financial obligation and you will not use College Opportunity Fund (COF) credits. You can withdraw between the census and withdrawal dates. It won't affect your grade point average, however, you will have a financial obligation, and you will use COF credits.

It is the student's responsibility to drop or withdraw from classes. You can withdraw from courses for the semester you are enrolled in on the student portal. Look at your detailed class schedule available on the Student tab of your Trinidad State Portal for drop and withdraw deadlines specific to each class. It is recommended that you speak with an advisor prior to dropping or withdrawing from a course. It is important to check with the business and

financial aid offices regarding any outstanding balances and/or financial consequences.

If you are an online student, please call one of the advising lines at 719-846-5026 or 719-589-7296 or contact your advisor.

If you are on campus and wish to withdraw, you can do so by contacting your advisor or visiting the advising office on either campus.

If a student decides to withdraw from a class after the Census, but before the last 20% of the class, the grade will be recorded as a "W." A "W" is not counted in computing grade point averages. If a student withdraws during the last 20% of the class, a regular grade will be assigned that does count in computing grade point averages.

A student who earns a grade of D, F, or U may repeat the course once for the purpose of improving the grade point average (GPA). Both grades earned will be entered on the transcript; however, only the highest grade will be counted in calculating the cumulative grade point average. Duplicate credit is not granted for repeating a course.

### **Tuition Refunds**

If a student officially drops from classes prior to the class Census date, there will be no financial obligation. If the student withdraws after the census date, they will be obligated for the cost of the class(es). The College reserves the right to cancel course offerings. Course cancellations will result in a refund of paid tuition.

### **Registration Deadline**

The deadline for registering for classes is the first Friday of class or as designated in the TSC schedule.

Students requesting to register after the deadline date must obtain approval from the Dean of Instruction for late registration authorization.

### **Tuition Classification**

Colorado law requires that students be classified as in-state or out-of-state for tuition

purposes. Tuition classification is based upon information supplied on the application for admission.

Students previously classified as out-of-state may have their classification changed through a Tuition Classification Petition process. Petitions and information concerning documentation may be obtained in the Trinidad campus Registrar's Office or the Valley Campus Admissions Office. Petition applications must be received by either the Registrar's Office or Admissions Office by the first Friday of class each semester. The tuition classification officer must request and maintain adequate documentation to support any applicant's claim for change in status. The policy for tuition classification is outlined in the Colorado Community College System (CCCS) System Procedure 4-40. For more information, go to <https://cccs.edu/policies-and-procedures/system-presidents-procedures/sp-4-40-in-state-tuition-classification/>.

#### **Deadline:**

Students have until the first Friday of each semester to submit a petition for change in Tuition Classification. Once the petition is submitted, the College will make a determination by census date.

#### **Tuition Classification Appeal Procedure:**

When a decision is rendered and the student is not in agreement with the decision, the student may appeal the decision to the "Student Affairs Committee" by contacting the Dean of Student Retention and Completion. The student will be required to present supporting documentation to a panel of institutional representatives for review and resolution. The student will be notified of the decision made by the appeals panel and the reasons behind the decision. The decision of the appeals committee is final.

### **Check Requirements**

To earn a degree, students must satisfy all course and curriculum requirements for the program under which they are registered and attain a cumulative grade point average of 2.0 or higher.\* (\* Although a "D" is considered a passing grade, "D's" are not calculated as an earned course toward a degree.) In addition, basic skills courses do not count toward a

## GENERAL INFORMATION (continued)

degree. Use the TSC Portal to access Degree Works. Degree Works is a tool available to all students. It provides information on degree progress, required courses and time to completion. Familiarize yourself with the provisions and regulations pertaining to your program. See an Advisor when in doubt. TSC will make every effort to assist you in meeting requirements for graduation.

Final responsibility, however, rests with the student.

If you have completed college courses at a location other than Trinidad State, an official transcript must be sent directly to Trinidad State from the institution where the credits were earned. College transcripts will be evaluated prior to registration to ascertain acceptable credits that apply to the student's program of study. Courses for which the student has earned a grade of "D" or "F" will not be accepted for credit. Students with a GPA below 1.5 may be admitted on academic probation.

In determining academic standing while attending TSC, the GPA of a transfer student is computed on the basis of credits attempted at Trinidad State College only and will not include credits and grade points earned at other colleges.

Up to 45 credits earned at regionally accredited colleges or universities or other approved educational institutions may be applied toward fulfilling TSC program requirements. Please contact the Registrar at 719-846-5550 for more information about accepted transfer credits.

### **Prior Learning Assessment**

The Prior Learning Assessment program, or PLA program, allows students to earn credit for learning that occurs outside the sponsorship of accredited post-secondary education institutions. PLA is not awarded for experience but for college-level learning which entails knowledge, skills, and competencies that students have obtained as a result of their prior learning experiences. Contact the Registrar at 719-846-5550 for more information about how to be awarded prior learning credit.

Transfer of credit for vocational courses are determined by the Dean of Instruction. Contact the Dean at 719-846-5524 on the Trinidad

Campus or 719-589-7064 on the Valley Campus for more information about how to receive vocational course credit.

### **Residence Halls**

There are four residence halls on the Trinidad Campus to house students. (One residence hall will be off-line during academic 2022-2023 for renovation.) The residence halls are staffed with housing employees and a support staff of residence assistants. Students living in the residence halls are required to have a meal plan through the dining hall. The food service company, Sodexo, strives to serve the students with a variety of menus, quality service, and unlimited seconds for most meals. For more information about housing go to: <https://trinidadstate.edu/residence-life/index.html>

### **Immunization Requirements**

Colorado Law (Board of Health rule 6 CCR 1009-2) requires that all full-time students born after January 1, 1957 show proof of immunization against measles, mumps, and rubella. Students residing in student housing are also required to show proof of immunization against meningococcal disease and COVID-19 at the time of housing check in. Certification and waiver forms are available online on the Student Life Housing link under immunization link or at the Student Services Office. The COVID-19 vaccination is not required as a condition of enrollment at the College. The College will provide students with a list of local providers offering the COVID-19 vaccine at no cost.

### **Student Health Insurance**

TSC does not require health insurance for non-athlete students. However, all student athletes must show proof of a student health insurance plan. Trinidad State encourages all students to carry health insurance. For information on student insurance, see the Student Services Office on your campus.

International Students are required to provide evidence of insurance in accordance with the International Student Application process.

### **TSC Notification System**

The TSC Notification System provides text messages, phone messages and email

notices regarding campus closures, campus emergencies and student notifications.

TSC uses the notification system to communicate with the campus community in the event of a crisis, emergency or timely warning. To confirm accurate contact information, login to the TSC Portal and click on the Notify Me link.

### **Student Complaints**

Students or prospective students who wish to file a complaint related to accreditation or grievance may submit a formal written Student Grievance in the Student Services Office of either campus, or at 600 Prospect Street, Berg Office 210, Trinidad, Colorado 81082, or by going online and filling out the form electronically at <https://trinidadstate.edu/students-current/complaints.html>

Complaints regarding accreditation can also be made by contacting the Higher Learning Commission 230 North La Salle Street, Suite 7-500, Chicago, IL 60604, telephone: 1-800-621-7440 <https://www.hlcommission.org/Students-Communities/complaints.html>

### **Military/Veterans and Their Families**

Trinidad State College takes pride in being able to meet the educational needs of military service members, their families and veterans. The college is approved by the Colorado State Approving Agency for Veterans Education. Military tuition assistance, veteran's education benefits, and veteran's vocational rehabilitation are administered by the Financial Aid Office on both campuses.

Each semester, active duty military members and veterans and /or beneficiaries using or wanting to use educational benefits must report to the Financial Aid Office after completing the enrollment process. To maintain educational benefits in good standing students must immediately inform the Financial Aid Office if you:

- drop, add or audit classes;
- stop attending classes;
- have a class canceled, withdraw or are withdrawn from classes or the college;
- are unable to attend classes; or
- make any changes to your enrollment status.



## GENERAL INFORMATION (continued)

TSC students using a military benefit must complete paperwork with the TSC Financial Aid Office each semester. To make an appointment to review your benefits, verification, intent to register or related questions, contact Financial Aid at 719-846-5017. For more information, visit the TSC website for Veteran Benefits or stop by the Financial Aid Office on your campus.

### **Student Bill of Rights**

The Colorado Student Bill of Rights focuses on various aspects of student academic life including advising, transferability of credits, and degree completion.

One segment of the Student Bill of Rights notes that a student may formalize a plan to obtain a degree in two years. Trinidad State College supports this timeline for graduation by publishing program pathway guidelines under which a full-time student may expect to graduate or complete and provides degree checklists through the Degree Works tool on the student portal. Program pathways are available online at <https://trinidadstate.edu/pathways/> and degree check on the TSC portal.

There are some majors, which may require additional degree requirements as recognized by the Colorado Department of Higher Education. For more information, or to read the Colorado Student Bill of Rights, go to <https://cdhe.colorado.gov/what-student-bill-rights> or see your Advisor in the on either campus.

### **Student Rights/FERPA**

The Family Educational Rights and Privacy Act (FERPA) of 1974 restricts the release of student information to the public without the consent of the student, except for directory information. Directory information includes name, major field of study, enrollment status, dates of enrollment, degrees and honors earned, participation in officially recognized activities and sports. Additional items for college athletes are height, weight and high school attended. The Solomon Amendment requires institutions receiving federal funds to provide additional directory information that includes address and phone number of enrolled students to the US Military. Directory information is limited to the current academic

year only. If a student does not wish TSC to release the directory information, a written request must be submitted in the Student Services Office before the end of the first week of classes. Your request will remain in effect until you formally cancel it. For more information, contact the Registrar directly at 719-846- 5550 for special accommodations.

Jeannie Clery Disclosure of Campus Security Policy and Campus Crime Statistics Act.

The Clery Act Disclosure and TSC Campus Crime Statistics are accessible on the TSC Website: <https://trinidadstate.edu/safe-campus/>. Hard copies are also available through the Student Services Office on each campus. Sexual assault protocols and victims' rights provisions are described on the safe campus link on the TSC website at <https://trinidadstate.edu/safe-campus/>. Victims are encouraged to report. Help is available.

Sex offender information is available at Colorado's Convicted Sex Offender website: <https://apps.colorado.gov/apps/dps/sor/>

Notification to the campus community will be sent following the confirmation of a significant emergency or dangerous situation involving an immediate threat to the health or safety of students or staff. TSC uses the Notify Me system for this notification.

In an emergency, Dial 911. Report crimes, violations, accidents, suspicious persons and incidents to the Campus Resource Officer on your campus or the Dean of Student Retention and Completion at 719-846-5458.

### **Return of Title IV Federal Financial Aid**

When a Title IV Financial Aid recipient completely withdraws from TSC prior to the end of the term, a refund of the aid will be calculated. The calculation will be based on the number of days attended compared to the total number of days in the semester.

Withdrawal after 60% of the term is not subject to the return calculation. Aid used for tuition, fees, books, and room/board will be refunded by both the student and the College. For a complete outline of the return of the Title IV process please go to <https://trinidadstate.edu/fia/return4.html> or see the TSC Catalog.

### **Non-Discrimination**

The College prohibits and will not tolerate discrimination or harassment that violates federal, state law, or Board Policy 3-120 or Board Policy 4-120. The College does not discriminate on the basis of gender (or gender identity), sex, race, color, age, creed, national or ethnic origin, genetic information, physical or mental disability, veteran status, pregnancy status, religion or sexual orientation.

The College complies with Titles VI and VII of the Civil Rights Act of 1964, the Civil Rights Act of 1991, the Education Amendments of 1972 (Title IX), the Age Discrimination in Employment Act, the Rehabilitation Act of 1973, the Americans with Disabilities Act, Pregnancy Discrimination Act of 1978, Vietnam Era Veterans Readjustment Assistance Act of 1974, Executive Order 11246, and sections 24-34- 301, C.R.S. et seq., The Genetic Information Nondiscrimination Act of 2008 (Pub.L. 110-233, 122 Stat. 881, enacted May 21, 2008, GINA).

For information regarding civil rights or grievance procedures, contact: Title IX Compliance/Equal Opportunity Officer. Yvette Atencio, Human Services Director, 600 Prospect Street, Trinidad, CO 81082 Phone: (719) 846-5538 or email [yvette.atencio@trinidadstate.edu](mailto:yvette.atencio@trinidadstate.edu).

Complaints may also be filed with the Legal Affairs office of the Colorado Community College System, 9101 E. Lowry Blvd., Denver, Colorado 80230-6011; or the Office for Civil Rights, U.S. Department of Education, Region VIII, Federal Office Building, 1244 Speer Blvd., Suite 310, Denver, Colorado, 80204.

### **Disability Services**

Reasonable accommodations for students will be provided upon request for persons with disabilities. In accordance with the Americans with Disabilities Act (ADA), Trinidad State College will provide accommodations for qualifying students with disabilities. To request an accommodation, contact the Special Populations Coordinator at 719-846-5624 on the Trinidad Campus Berg 209 or call 719-589-7067 on the Valley Campus Room 104.

## GENERAL INFORMATION (continued)

### State Authorization

Trinidad State College is currently working cooperatively with higher education authorities in all states and other U.S. jurisdictions to ensure compliance with state authorization requirements that govern the offering of courses in those states, including complaint processes.

Trinidad State College will continue to monitor developments in the jurisdictions in which it enrolls students, and, if authorization or licensure is or becomes necessary, it will obtain approvals or provide notice here of the jurisdictions in which it is not authorized to offer courses or programs.

Currently Trinidad State College has approval to offer courses in the following states:

Alabama, Alaska, Arkansas, Arizona, Colorado, Connecticut, Delaware, District of Columbia, Florida, Georgia, Hawaii, Idaho, Illinois, Iowa, Indiana, Kansas, Kentucky, Louisiana, Maine, Maryland, Michigan, Massachusetts, Minnesota, Mississippi, Missouri, Montana, Nebraska, Nevada, New Hampshire, New Jersey, New Mexico, New York, North Carolina, North Dakota, Oklahoma, Ohio, Oregon, Pennsylvania, Rhode Island, South Carolina, South Dakota, Tennessee, Texas, Utah, Vermont, Virginia, Washington, West Virginia, Wisconsin, and Wyoming.

Trinidad State College is currently NOT authorized to offer courses in the following states:

California

If you are not an on-campus student at Trinidad State College and plan to enroll in distance classes, please check the information provided above to verify that your state has either authorized or exempted our college to offer such classes or programs to you as a resident of that state.

If you reside in an "unauthorized" state and plan to take distance education classes, please note that we are not authorized or exempted to offer distance education classes or programs to you as a resident of an "unauthorized" state.

If you have questions or concerns, please contact the Registrar at 719-846-5550.

### Smoking Policy

Smoking is prohibited in all College buildings as directed by the Governor's Executive Order D0036.90. Smoking is also prohibited within 25 feet of doorways and buildings.

### Student Right-to-know

In accordance with Title I of Public Law 101-542, information about graduation, persistence and transfer rates are available on the TSC Website at <https://trinidadstate.edu/consumer/> or from the Office

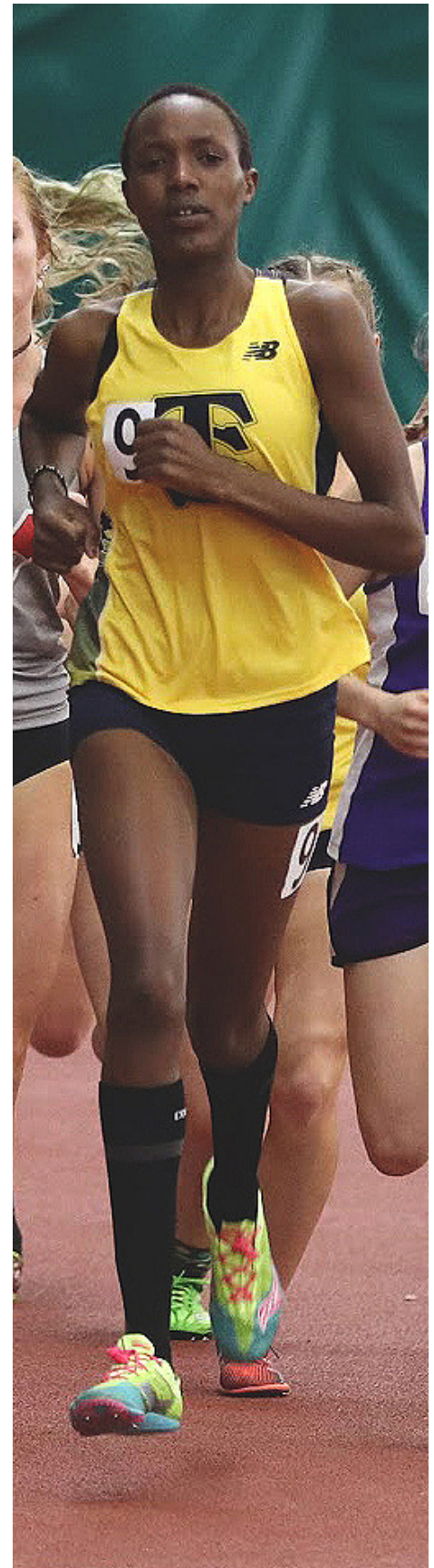
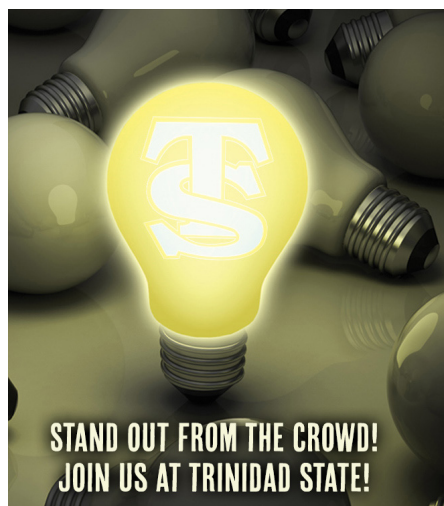
of Institutional Research; additional graduation data is also available at the Colorado Department of Higher Education Website.

### Voter Registration Information

TSC fully supports and advocates that students and staff register to vote. Voter Registration forms are available on the Colorado Secretary of State Website at <https://www.coloradosos.gov/voter/pages/pub/home.xhtml>

### Consumer Information

Federal regulations require Trinidad State to Provide consumer information to students, prospective students and the campus community about the college and financial aid. For a complete list of consumer information review: <https://trinidadstate.edu/consumer/>.





# PHONE NUMBERS

## Trinidad Campus

### Emergency: 911

Campus Security using an on-campus telephone 9-719-680-2119

Campus Security using an off-campus telephone 719-680-2119

All numbers are Area Code 719

- Admissions : Berg 201, 846-5621
- Advising : Berg 209, 846-5026
- Athletic Director : Boyd 109, 846-5653
- Cashier/Business Office : Berg 209, 846-5547
- Dean of Instruction : Davis 118, 846-5524
- Dean of Instruction : Valley Campus, 589-7064
- Educational Opportunity Center (EOC) : Berg 201, 846-5689
- Human Resources : Berg 101, 846-5538
- Mail Room : Berg Bottom Floor, 846-5498
- Payroll : Berg 101, 846-5570
- Recruiter : Berg 201, 846-5599
- Residence Halls : 719-680-1520
- TRiO Student Support Services : Berg 209, 846-5624 (Academic Support, Advising, Financial Aid, Transfer, Tutoring, and more)
- Testing Center : Berg 201, 846-5657
- Adult Education/GED/ESL : Latuda Hall, 846-5640
- Affirmative Action : Berg 101, 846-5538
- Bookstore : Sullivan Center, 846-5610
- Computer (IT) Help Desk : Davis 202, 846-5663
- Dean of Student Retention & Completion : Berg 201, 846-5458
- Dining Hall : Sullivan Center, 846-5629
- Financial Aid : Berg 209, 846-5017
- Library : 846-5593
- Nursing Department : Davis 118, 846-5524
- Physical Plant : Banta 202, 846-5618
- Registrar : Berg 108, 846-5550
- Student Life : Berg 201, 846-5474
- Veterans Certifying Officer : Valley Campus 104, 589-7045

## Valley Campus

### Emergency: 911

Campus Security using an on-campus telephone 9-719-221-6398

Campus Security using an off-campus telephone 719-221-6398

All numbers are Area Code 719

- Admissions & Records : Main Room 104, 589-7026
- Advising : Main Room 104, 589-7296
- Comm. & Concurrent Ed : Main Room 202, 589-7064
- Career & Disability Services : Main Room 104, 589-7067
- Human Resources : Main Room 112, 846-5538
- Testing : Trinidad Campus Berg 201, 846-5657
- Tutoring : Main Room 104, 589-7063
- Adult Education/GED/ESL : Main Room 203, 589-7137
- Dean of Instruction : Main Room 202, 589-7064
- Cashier/Business Office : Main Room 104, 589-7026
- Financial Aid : Main Room 104, 589-7045
- Student Life : Trinidad Campus Berg 201, 846-5474
- TRiO Support Services : Main Room 104, 589-7063
- Veterans Certifying Officer : Main Room 104, 589-7045



## 2024-2025 COURSE SPECIFIC FEES

Course #	Course Name	Fee	Frequency	Explanation
ADE 1035	Small Gasoline Engines	\$22.80	Per Course	Shop supplies and waste disposal fees
AGE 1102	Agriculture Economics	\$10.61	Per Course	Course materials
AGE 2105	Farm and Ranch Management	\$10.61	Per Course	Course materials
AGE 2108	Agriculture Finance	\$10.61	Per Course	Course materials
AGE 2110	Agriculture Marketing	\$10.61	Per Course	Course materials
AGP 1007	Practical Irrigation Mgmt	\$10.61	Per Course	Course materials
AGP 1080	Production Ag Internship	\$10.61	Per Course	Course materials
AGY 1100	General Crop Production	\$10.61	Per Course	Course materials
AGY 2140	Intro Soil Science	\$10.61	Per Course	Course materials
ANT 1004	Archaeology Laboratory: GT-SS3	\$155.91	Per Course	Course materials
ART 1002	Visual Concepts in 2-D Design	\$28.09	Per Course	Course materials
ART 1003	Visual Concepts in 3-D Design	\$28.09	Per Course	Course materials
ART 1110	Art Appreciation: AH1	\$16.00	Per Course	Cost of Materials and Supplies
ART 1201	Drawing I	\$28.09	Per Course	Course materials
ART 1202	Drawing II	\$28.09	Per Course	Course materials
ART 1203	Figure Drawing I	\$28.09	Per Course	Course materials
ART 1301	Painting I	\$28.09	Per Course	Course materials
ART 1302	Painting II	\$28.09	Per Course	Course materials
ART 1501	Print Making	\$28.09	Per Course	Course materials
ART 1703	Ceramics I	\$28.09	Per Course	Course materials
ASC 1100	Animal Sciences	\$10.61	Per Course	Course materials
ASC 2105	Live Animal/Carcass Evaluation	\$31.20	Per Course	Course materials
ASC 2125	Feeds and Feeding	\$10.61	Per Course	Course materials
ASE 1001	Auto Shop Orientation	\$6.11	Per Course	Course materials
ASE 1002	Intro to the Automotive shop	\$6.11	Per Course	Course materials
ASE 1010	Brakes I	\$12.35	Per Course	Shop supplies and waste disposal fees
ASE 1011	Auto Brake II	\$12.35	Per Course	Shop supplies and waste disposal fees
ASE 1020	Basic Auto Electricity	\$6.11	Per Course	Course materials
ASE 1022	Auto Elec Safety Systems	\$6.11	Per Course	Course materials
ASE 1023	Starting & Charging Sys	\$6.11	Per Course	Course materials
ASE 1030	General Engine Diagnosis	\$12.35	Per Course	Shop supplies and waste disposal fees
ASE 1032	Ignition System Diag. & Repair	\$6.11	Per Course	Course materials
ASE 1034	Autofuel & emissions Syst I	\$12.35	Per Course	Shop supplies and waste disposal fees
ASE 1040	Steering and Suspension I	\$12.35	Per Course	Shop supplies and waste disposal fees
ASE 1041	Suspension and Steering II	\$12.35	Per Course	Shop supplies and waste disposal fees
ASE 1050	Man Drv Trn & Axle	\$12.35	Per Course	Shop supplies and waste disposal fees
ASE 1052	Man Trans/Transaxles/Clutch II	\$12.35	Per Course	Shop supplies and waste disposal fees
ASE 1060	Auto Engine Repair	\$12.35	Per Course	Shop supplies and waste disposal fees
ASE 1062	Auto Engine Service	\$12.35	Per Course	Shop supplies and waste disposal fees
ASE 2010	Auto Pwr/ABS Brake Systems	\$12.35	Per Course	Shop supplies and waste disposal fees
ASE 2021	Auto/Diesel Body Electrical	\$6.11	Per Course	Course materials
ASE 2031	Auto Comp & Ignition Sys	\$6.11	Per Course	Course materials
ASE 2033	Auto Fuel Injection /Emissions	\$12.35	Per Course	Shop supplies and waste disposal fees
ASE 2040	Suspension and Steering III	\$12.35	Per Course	Shop supplies and waste disposal fees
ASE 2050	Auto Trans/Transaxle Service	\$12.35	Per Course	Shop supplies and waste disposal fees
ASE 2051	Auto Trans/Transaxle Repair	\$12.35	Per Course	Shop supplies and waste disposal fees
ASE 2064	Intro to HVAC Systems	\$12.35	Per Course	Shop supplies and waste disposal fees
ASE 2065	HVAC Systems	\$12.35	Per Course	Shop supplies and waste disposal fees
AVT 1060	Introduction to Unmanned Aircraft Sy	\$78.80	Per Course	Course Materials/Transportation/Maintenance
BIO 1004	Biology: A Human Approach	\$36.40	Per Course	Expendable lab materials and cadavers
BIO 1005	Science of Biology w/Lab: SC1	\$21.22	Per Course	Expendable laboratory materials and cadavers
BIO 1052	Willife Biology	\$20.00	Per Course	Cost of supplies
BIO 1111	Gen College Biology I/Lab: SC1	\$26.52	Per Course	Expendable laboratory materials and cadavers
BIO 1112	Gen College Biology II/Lab: SC1	\$26.52	Per Course	Expendable laboratory materials and cadavers
BIO 2101	Human Anatomy&Phys w/Lab I: SC1	\$36.40	Per Course	Expendable laboratory materials and cadavers
BIO 2102	Human Anatomy&Phys w/Lab II: SC	\$36.40	Per Course	Expendable laboratory materials and cadavers
BIO 2104	Microbiology w/Lab: SC1	\$42.44	Per Course	Expendable laboratory materials and cadavers
BIO 2120	General Zoology w/Lab: SC1	\$28.36	Per Course	Expendable laboratory materials and cadavers
BIO 2121	Botany w/Lab: SC1	\$22.87	Per Course	Expendable laboratory materials and cadavers
BUS 1015	Introduction to Business	\$5.31	Per Course	workbook and course materials
BUS 2017	Business Communication/Report Wr	\$5.31	Per Course	workbook and course materials
CHE 1011	Introduction to Chemistry I	\$5.31	Per Course	lab supplies
CHE 1011	Introduction to Chemistry I	\$5.31	Per Course	chemical disposal
CHE 1011	Introduction to Chemistry I w/Lab: GT	\$27.82	Per Course	Course materials
CHE 1012	Introduction to Chemistry II	\$5.31	Per Course	lab supplies
CHE 1012	Introduction to Chemistry II	\$5.31	Per Course	chemical disposal



## COURSE SPECIFIC FEES (continued)

Course #	Course Name	Fee	Frequency	Explanation
CHE 1012	Introduction to Chemistry II w/Lab: G	\$27.82	Per Course	Course materials
CHE 1111	Gen College Chem II/Lab: SC1	\$49.12	Per Course	Expendable laboratory materials
CHE 1112	Gen College Chem III/Lab: SC1	\$49.12	Per Course	Expendable laboratory materials
COS 1003	Shampoo/Rinses/Conditioners I	\$10.39	Per Course	Course materials
COS 1010	Introduction to Hair Coloring	\$10.39	Per Course	Course materials
COS 1011	Intermediate: Hair Coloring	\$10.39	Per Course	Course materials
COS 1030	Introduction to Hair Styling	\$10.39	Per Course	Course materials
COS 1031	Intermediate I Hair Styling	\$10.39	Per Course	Course materials
COS 1040	Introduction to Chemical Texture	\$10.39	Per Course	Course materials
COS 1041	Intermediate I Chemical Texture	\$10.39	Per Course	Course materials
COS 2003	Shampoos/Rinses/ Conditioners II	\$10.39	Per Course	Course materials
COS 2010	Intermediate II Hair Coloring	\$10.39	Per Course	Course materials
COS 2011	Advanced Hair Coloring	\$10.39	Per Course	Course materials
COS 2030	Intermediate II Hair Styling	\$10.39	Per Course	Course materials
COS 2031	Advanced Hair Styling	\$10.39	Per Course	Course materials
COS 2040	Intermediate II Chemical Texture	\$10.39	Per Course	Course materials
COS 2041	Advanced Chemical Texture	\$10.39	Per Course	Course materials
COS 2060	Inter II: Disinfe/Sanit/Safety	\$9.00	Per Course	Malpractice insurance
DEA 1023	Dental Assisting	\$220.54	Per Course	Course materials
DEA 1023	Dental Assisting	\$9.00	Per Course	Malpractice insurance
DPM 1003	Diesel Engines I	\$20.40	Per Course	Shop supplies and waste disposal fees
DPM 1005	Heavy Duty Powertrains I	\$20.40	Per Course	Shop supplies and waste disposal fees
DPM 1006	Diesel Fuel Systems	\$20.40	Per Course	Shop supplies and waste disposal fees
DPM 1021	Hydraulic Systems I	\$20.40	Per Course	Shop supplies and waste disposal fees
DPM 1022	Hydraulic Systems II	\$20.40	Per Course	Shop supplies and waste disposal fees
DPM 1077	Lab Experience I	\$20.40	Per Course	Shop supplies and waste disposal fees
DPM 2003	Diesel Engines II	\$20.40	Per Course	Shop supplies and waste disposal fees
DPM 2005	Heavy Duty Powertrains II	\$20.40	Per Course	Shop supplies and waste disposal fees
DPM 2006	Heavy Duty Brakes I	\$20.40	Per Course	Shop supplies and waste disposal fees
EIC 1102	Safety & Industry Certifications	\$127.50	Per Course	OSHA/Flagger Training
EIC 1103	Electrical Principles and Applied	\$72.76	Per Course	Math Course materials
EIC 1231	Overhead Power Systems	\$265.20	Per Course	Climbing poles
EIC 1232	Hotline Procedures	\$244.44	Per Course	Cost of materials
EMS 1021	EMT Fundamentals	\$9.00	Per Course	Malpractice insurance
EMS 1021	EMT Fundamentals	\$107.69	Per Course	Supplies
EMS 1125	AEMT Fundamentals	\$9.00	Per Course	Malpractice insurance
EMS 1125	AEMT Fundamentals	\$153.00	Per Course	Simulation maintenance and service
EMS 1125	AEMT Fundamentals	\$153.00	Per Course	Course materials
EMS 1132	EMT IV/IO	\$105.68	Per Course	Consumable supplies
EMS 2025	Paramedic Fundamentals	\$9.00	Per Course	Malpractice insurance
EMS 2025	Paramedic Fundamentals	\$153.00	Per Course	Course supplies
EMS 2025	Paramedic Fundamentals	\$204.00	Per Course	Tracking program for compliance for national
EMS 2025	Paramedic Fundamentals	\$459.00	Per Course	Simulation maintenance and service
EMS 2031	Paramedic Cardiology	\$459.00	Per Course	Simulation maintenance and service
ENG 1021	English Composition I : CO1	\$10.39	Per Course	Brainfuse online tutoring platform
EST 1010	Introduction to Facials and Skin	\$10.39	Per Course	Course materials
EST 1011	Intermediate Facials and Skin Care	\$10.39	Per Course	Course materials
EST 2010	Advanced Massage and Skin Care	\$10.39	Per Course	Course materials
EST 2011	Facial Make-up	\$10.39	Per Course	Course materials
EST 2012	Hair Removal	\$10.39	Per Course	Course materials
GUR 1001	NRA Home Firearm Safety Course	\$10.00	Per Course	Cost of range fees
GUR 1001	NRA Home Firearm Safety Course	\$12.47	Per Course	Cost of materials
GUR 1006	NRA Basic Pistol Shooting	\$10.00	Per Course	Cost of range fees
GUR 1006	NRA Basic Pistol Shooting	\$16.00	Per Course	Cost of materials
GUR 1007	NRA Basic Shotgun Shooting	\$15.60	Per Course	Cost of materials
GUR 1007	NRA Basic Shotgun Shooting	\$14.56	Per Course	Cost of materials
GUR 1008	Muzzleloading Pistol Shooting	\$10.00	Per Course	Cost of range fees
GUR 1008	Muzzleloading Pistol Shooting	\$14.56	Per Course	Cost of materials
GUR 1009	Muzzleloading Rifle Shooting	\$10.00	Per Course	Cost of range fees
GUR 1009	Muzzleloading Rifle Shooting	\$14.56	Per Course	Cost of materials
GUR 1010	NRA Basic Rifle Shooting	\$10.00	Per Course	Cost of range fees
GUR 1010	NRA Basic Rifle Shooting	\$15.60	Per Course	Cost of materials
GUR 1011	Muzzleloading Shotgun Shooting	\$15.60	Per Course	Cost of materials
GUR 1011	Muzzleloading Shotgun Shooting	\$19.75	Per Course	Cost of materials
GUR 1012	NRA Personal Protection Course	\$10.00	Per Course	Cost of range fees
GUR 1012	NRA Personal Protection Course	\$23.91	Per Course	Cost of materials

## COURSE SPECIFIC FEES (continued)

Course #	Course Name	Fee	Frequency	Explanation
GUR 1020	NRA Range Safety Officer	\$10.00	Per Course	Cost of range fees
GUR 1020	NRA Range Safety Officer	\$24.74	Per Course	Cost of materials
GUR 2000	NRA Basic Instruction Training	\$10.00	Per Course	Cost of range fees
GUR 2000	NRA Basic Instruction Training	\$12.59	Per Course	Cost of materials
GUR 2001	Firearm Safety Instructor	\$10.00	Per Course	Cost of range fees
GUR 2001	Firearm Safety Instructor	\$12.47	Per Course	Cost of materials
GUR 2001	Firearm Safety Instructor	\$14.76	Per Course	Cost of materials
GUR 2006	NRA Pistol Instructor	\$10.00	Per Course	Cost of range fees
GUR 2006	NRA Pistol Instructor	\$16.11	Per Course	Cost of materials
GUR 2006	NRA Pistol Instructor	\$10.39	Per Course	Cost of materials
GUR 2007	NRA Shotgun Shooting Inst	\$15.60	Per Course	Cost of materials
GUR 2007	NRA Shotgun Shooting Inst	\$14.56	Per Course	Cost of materials
GUR 2007	NRA Shotgun Shooting Inst	\$10.39	Per Course	Cost of materials
GUR 2008	NRA Muzzleloading Instructor	\$10.39	Per Course	Cost of materials
GUR 2008	NRA Muzzleloading Instructor	\$14.56	Per Course	Cost of materials
GUR 2008	NRA Muzzleloading Instructor	\$14.56	Per Course	Cost of materials
GUR 2010	Basic Rifle Shooting Instruc	\$10.00	Per Course	Cost of range fees
GUR 2010	Basic Rifle Shooting Instruc	\$15.60	Per Course	Cost of materials
GUR 2010	Basic Rifle Shooting Instruc	\$18.71	Per Course	Cost of materials
GUR 2012	NRA Personal Protection Instr	\$10.00	Per Course	Cost of range fees
GUR 2012	NRA Personal Protection Instr	\$23.91	Per Course	Cost of materials
GUR 2012	NRA Personal Protection Instr	\$20.30	Per Course	Cost of materials
GUR 2020	NRA Chief Range Safety Officer	\$10.00	Per Course	Cost of range fees
GUR 2020	NRA Chief Range Safety Officer	\$24.74	Per Course	Cost of materials
GUR 2020	NRA Chief Range Safety Officer	\$27.02	Per Course	Cost of materials
GUS 1000	Orientation and Firearms safety	\$300.00	Per Course	Technology - student i-pads
GUS 1010	Firearms Bench Metal	\$32.21	Per Course	Cost of materials
GUS 1012	Firearms Machine Shop I	\$172.76	Per Course	Cost of materials
GUS 1027	Firearms Machine Shop II	\$169.74	Per Course	Cost of materials
GUS 2005	Firearms Machine Shop III	\$172.76	Per Course	Cost of materials
HEQ 1040	Heavy Equipment Operations	\$76.50	Per Course	Equipment repairs
HEQ 2020	Motor Grader I	\$76.50	Per Course	Equipment repairs
HEQ 2020	Motor Grader I	\$51.00	Per Course	Fuel and Maintenance
HEQ 2021	Motor Grader II	\$108.93	Per Course	Cost of materials
HEQ 2025	Backhoe I	\$76.50	Per Course	Equipment repairs
HEQ 2025	Backhoe I	\$51.00	Per Course	Fuel and Maintenance
HEQ 2026	Backhoe II	\$108.93	Per Course	Cost of materials
HEQ 2030	Hydraulic Excavator	\$76.50	Per Course	Equipment repairs
HEQ 2030	Hydraulic Excavator	\$51.00	Per Course	Fuel and Maintenance
HEQ 2040	Basic Bulldozer I	\$51.00	Per Course	Fuel and Maintenance
HEQ 2040	Bulldozer I	\$76.50	Per Course	Equipment repairs
HEQ 2042	Skid Steers	\$76.50	Per Course	Equipment repairs
HEQ 2042	Skid Steers	\$51.00	Per Course	Fuel and Maintenance
HEQ 2046	Front End Loader II	\$51.00	Per Course	Fuel and Maintenance
HEQ 2046	Front End Loaders	\$76.50	Per Course	Equipment repairs
HEQ 2050	On-Road Dump Trucks	\$108.93	Per Course	Cost of materials
HLT 1060	Greenhouse Management	\$10.61	Per Course	Course materials
HLT 1101	Introduction to Horticulture	\$10.61	Per Course	Course materials
HLT 2026	Interior Plants	\$10.61	Per Course	Course materials
HWE 1061	Fitness and Wellness	\$5.26	Per Course	Course materials
LEA 1007	Law Enforcement Driving	\$636.47	Per Course	Vehicle Fuel and Maintenance
LEA 1008	Firearms	\$318.24	Per Course	Firearms Range costs - including targets,
MAC 1010	Introduction to Engine Lathe	\$65.43	Per Course	Cost of materials
MAC 1011	Intermediate Engine Lathe	\$65.43	Per Course	Cost of materials
MAC 1020	Intro to Milling Machine	\$65.43	Per Course	Cost of materials
MAC 1020	Intro to Milling Machine	\$65.43	Per Course	Cost of materials
MAC 1021	Intermediate Milling Machine	\$65.43	Per Course	Cost of materials
MAC 1022	Adv Milling Machine Operations	\$65.43	Per Course	Cost of materials
MAN 2026	Principles of Management	\$5.15	Per Course	workbook, course materials and supplies
MAP 1083	Medical Assistant Internship	\$9.00	Per Course	Malpractice Insurance
MAP 1083	Medical Assistant Internship	\$73.48	Per Course	Course materials
MAP 2038	Medical Assisting Laboratory	\$95.63	Per Course	Course materials
MAP 2040	Medical Assist Clinical Skills	\$102.13	Per Course	Course materials
MAP 2069	Review- Medical Asst Natl Exam	\$161.11	Per Course	Course materials
MAP 2069	Review- Medical Asst Natl Exam	\$76.91	Per Course	Cost of supplies
MAT 1240	Math for Liberal Arts: MA1	\$10.39	Per Course	Brainfuse online tutoring platform

## COURSE SPECIFIC FEES (continued)

Course #	Course Name	Fee	Frequency	Explanation
MAT 1260	Intro to Statistics: MA1	\$10.39	Per Course	Brainfuse online tutoring platform
MAT 1340	College Algebra : MA1	\$10.39	Per Course	Tutor fee (online platform)
MUS 1041	Private Instruction: (specify)	\$106.01	Per Course	Private instruction fee
MUS 1042	Private Instruction: (specify)	\$106.01	Per Course	Private instruction fee
MUS 1043	Private Instruction: (specify)	\$106.01	Per Course	Private instruction fee
MUS 1044	Private Instruction: (specify)	\$106.01	Per Course	Private instruction fee
NAT 1010	Introduction to Manicures & Pedicure	\$10.71	Per Course	Course materials
NAT 1011	Intermediate Manicures & Pedicures	\$10.71	Per Course	Course materials
NAT 2010	Advanced Manicures & Pedicures	\$10.71	Per Course	Course materials
NAT 2011	Application of Artificial Nails	\$10.71	Per Course	Course materials
NUA 1001	Nurse Aide Health Care Skills	\$9.00	Per Course	Malpractice Insurance
NUA 1001	Nurse Aide Health Care Skills	\$188.70	Per Course	Supplies
NUA 1070	Nurse Aide Clinical Experience	\$37.97	Per Course	Materials
NUR 1006	Med-Surg Nursing Concepts	\$34.58	Per Course	Supplies
NUR 1006	Med-Surg Nursing Concepts	\$35.08	Per Course	Materials
NUR 1006	Med-Surg Nursing Concepts	\$167.76	Per Course	Testing
NUR 1009	Fundamentals of Nursing	\$9.00	Per Course	Malpractice Insurance
NUR 1009	Fundamentals of Nursing	\$163.13	Per Course	Testing
NUR 1009	Fundamentals of Nursing	\$172.85	Per Course	Supplies
NUR 1009	Fundamentals of Nursing	\$265.11	Per Course	Simulation
NUR 1050	Nur Care of Obstetric and Pediatric	\$38.75	Per Course	Clinicals
NUR 1069	Transition into Pediatric Nrsng	\$250.20	Per Course	Testing
NUR 1089	Transition from LPN to ADN	\$165.00	Per Course	Testing
NUR 2001	IV Therapy for LPN	\$9.00	Per Course	Malpractice Insurance
NUR 2001	IV Therapy for LPN	\$102.00	Per Course	Consumable Supplies
NUR 2006	Adv Concepts of Med/Surg NSG I	\$9.00	Per Course	Malpractice Insurance
NUR 2006	Adv Concepts of Med/Surg NSG I	\$150.71	Per Course	Supplies
NUR 2006	Adv Concepts of Med/Surg NSG I	\$265.11	Per Course	Simulation
NUR 2011	Psychiatric-Mental Health NSG	\$97.09	Per Course	Clinicals
NUR 2016	Adv Concepts Med-Surg NSG II	\$35.08	Per Course	Supplies
NUR 2016	Adv Concepts Med-Surg NSG II	\$167.76	Per Course	Testing
NUR 2016	Adv Concepts Med-Surg NSG II	\$230.36	Per Course	Boards
NUR 2030	Transition to Professional NSG	\$335.64	Per Course	Testing
NUR 3001	Integration of BSN	\$612.00	Per Course	Simulation maintenance and service
NUR 4008	Legal Ethical	\$9.00	Per Course	Malpractice Insurance
OSH 1310	10HR Constructn Industry Strnds	\$25.50	Per Course	digital access
PHY 1111	Physics: Algebra-Based I	\$10.50	Per Course	Course materials
PHY 1112	Physics: Algebra-Based II	\$10.50	Per Course	Course materials
PHY 2111	Physics: Calculus Based I	\$10.50	Per Course	Course materials
PHY 2112	Physics: Calculus Based II	\$10.50	Per Course	Course materials
RAM 2005	Range Management	\$10.24	Per Course	Course materials
THE 1005	Theater Appreciation: GT-AH1	\$18.36	Per Course	Theater experience
THE 1008	Theatre Script Analysis: AH1	\$10.00	Per Course	Theatre Production Costs
THE 1011	Acting I	\$10.00	Per Course	Theatre Production Costs
THE 1016	Technical Theatre	\$10.00	Per Course	Theatre Production Costs
THE 1029	Introduction to the Entertainment Industr	\$10.00	Per Course	Theatre Production Costs
THE 2011	Development of Theatre Greek - Ren	\$10.00	Per Course	Theatre Production Costs
THE 2012	Development of Theatre Restoration	\$10.00	Per Course	Theatre Production Costs
TMC 1001	Intro to Trails	\$51.00	Per Course	Transportation to field site & field work supplies
TMC 1003	Intro to Trail Maintenance	\$51.00	Per Course	Transportation to field site & field work supplies
TMC 1010	Trail Planning I	\$51.00	Per Course	Transportation to field site & field work supplies
TMC 1020	Trail Design I	\$51.00	Per Course	Transportation to field site & field work supplies
TMC 1030	Trail Construction I	\$102.00	Per Course	Transportation to field site & field work supplies
TMC 1032	Trail Construction II	\$102.00	Per Course	Transportation to field site & field work supplies
TMC 1050	Trails in Challenging Terrain	\$102.00	Per Course	Transportation to field site & field work supplies
TMC 1060	Trail Ops and Maintenance	\$102.00	Per Course	Transportation to field site & field work supplies
UAS 1050	UAS Foundations	\$80.33	Per Course	Course Materials/Transportation/Maintenance
UAS 1051	UAS Applications	\$10.71	Per Course	Course Materials/Transportation/Maintenance
UAS 1052	UAS Personnel	\$10.71	Per Course	Course Materials/Transportation/Maintenance
UAS 1053	UAS Safety Management	\$10.71	Per Course	Course Materials/Transportation/Maintenance
WEL 1021	Structural Welding I	\$193.32	Per Course	Course materials
WEL 1022	Structural Welding II	\$193.33	Per Course	Course materials
WEL 1024	Intro-Gas Tungsten Arc Welding	\$193.33	Per Course	Course materials
WEL 1025	Intro-Gas Metal Arc Welding	\$193.33	Per Course	Course materials
WEL 1035	Tig Welding for Gunsmiths	\$97.54	Per Course	Course materials
WEL 2003	Flux Cored Arc Welding I	\$193.33	Per Course	Course materials





» Please turn in your official transcript to qualify for scholarships.

» **President's Scholarship** 3.5 – 4.0 GPA

**Amount:** 6 credit hours paid for on-campus learning, in-state tuition per semester

- Criteria:**
- First time degree/certificate – seeking undergraduate student
  - High School/GED GPA 3.5 – 4.0, or have achieved a 1130 or higher score on the SAT
  - Students must carry 15 credit hours per semester Fall/Spring
  - Maintain a cumulative GPA of 3.5 or higher to sustain the scholarship
  - Colorado students must apply for the College Opportunity Fund (COF)
  - Submit official high school transcript to verify eligibility

**Duration:** Up to four semesters or 60 credit hours based on academic performance

**Deadline:** Fall Semester ~ September 1      Spring Semester ~ January 5

» **Automatic Merit Scholarship** 3.0 – 3.499 GPA

**Amount:** 3 credit hours paid for on-campus learning, in-state tuition per semester

- Criteria:**
- First time degree/certificate – seeking undergraduate student
  - High School /GED 3.0-3.499, or have achieved a 980-1120 or higher score on the SAT
  - Students must carry 15 credit hours per semester Fall/Spring
  - Maintain a cumulative GPA of 3.0 or higher to sustain the scholarship
  - Colorado students must apply for the College Opportunity Fund (COF)
  - Submit official high school transcript to verify eligibility

**Duration:** Up to four semesters or 60 credit hours based on academic performance

**Deadline:** Fall Semester ~ September 1      Spring Semester ~ January 5

» **Learn Local Scholarship**

**Amount:** 3 credit hours paid for on-campus learning, in-state tuition per semester

- Criteria:**
- Scholarship available to students who graduated from a high school in the Trinidad/Alamosa service area counties: Alamosa, Conejos, Costilla, Las Animas, Huerfano, Mineral, Rio Grande, and Saguache.
  - Students must carry 15 credit hours per semester Fall/Spring
  - Colorado students must apply for the College Opportunity Fund (COF)
  - Submit official high school transcript to verify eligibility

**Duration:** Up to four semesters or 60 credit hours based on academic performance

**Deadline:** Fall Semester ~ September 1      Spring Semester ~ January 5

» **Trinidad State Scholarships**

For more details or to apply for Trinidad State institutional scholarships, contact the TSC Admissions Office at (719) 846-5621 or visit our Scholarship web page at [trinidadstate.edu/scholarships](http://trinidadstate.edu/scholarships)

» **Finish Line Scholarship**

**Amount:** 3 credit hours paid for on-campus learning, in-state tuition

- Criteria:**
- Scholarship available to students who have earned 45 credit hours and in the final semester at Trinidad State
  - Students must carry 15 credit hours for the final semester
  - Colorado students must apply for the College Opportunity Fund (COF)
  - Students must submit a graduation application and demonstrate they are in their last semester of coursework.

**Duration:** Last semester at Trinidad State College

» **60+ Foundation Scholarships!**

More than 60 scholarships are available through the Trinidad State College Foundation. Scholarships are available for new and/or continuing students who demonstrate academic promise in a particular field of study or skill.

**Priority Deadline:** First Friday of March.

For more information regarding Foundation Scholarships, call (719) 846-5520.